

# ((\*\*Guadalajara\*\*))

Clarinete 1

## Julion

Trans: paço Chavez  
pacomaldini3@hotmail.com

♩ = 200

7

13

18

25

39

45

52

58

64

92

97

103

110

119

Voz

A

B

20

3

1.

2.

7

7

♩ = 110

♩ = 200

*D.S. al Fine*

# ((\*\*Guadalajara\*\*))

Clarinete 2

## Julion

Trans: pafo Chavez  
pacomaldini3@hotmail.com

♩ = 200

7

13

18

25

31

A

39

45

52

58

64

B

20

3

1.

2.

92

D.S. al Fine

97

103

110

♩ = 110

7

♩ = 200

119

Voz

Clarinete 3

# ((\*\*Guadalajara\*\*))

## Julion

Trans: paño Chavez  
pacomaldini3@hotmail.com

♩ = 200

7

13 Voz

18

25

31 A

39

45

52

58

64 B

92 D.S. al Fine

97

103

110 =110 7 =200

119

((<sup>\*\*</sup>Guadalajara<sup>\*\*</sup>))

Trombón 1 Si $\flat$

# Julion

Trans: paço Chavez  
pacomaldini3@hotmail.com

Musical score for Trombone 1 in B-flat major, 8/8 time. The score consists of 11 staves of music. The tempo is marked as  $\text{♩} = 200$  at the beginning and  $\text{♩} = 110$  at the end. The score includes various musical notations such as slurs, ties, and dynamic markings. A watermark 'DAMIÁN' is visible across the score.

10

18 **A** 12

36

47

56

64 **B**

73 2

84 1.

91 2. *D.S. al Fine*

100

108  $\text{♩} = 110$  3

118  $\text{♩} = 200$

# ((\*\*Guadalajara\*\*))

Trombón 2 Sib

## Jubion

Trans: pafo Chavez  
pacomaldini3@hotmail.com

♩ = 200

10

Voz

18 12 A

36

47

56

64 B

73 2

85 1. 2.

92 D.S. al Fine

100

108 ♩ = 110 3

118 ♩ = 200

# ((\*\*Guadalajara\*\*))

Trombón 3 Sib

## Julion

Trans: paço Chavez  
pacomaldini3@hotmail.com

♩ = 200



10



Voz

18



A

12

36



47



56



64



B

73



2

84



1.

91



2. D.S. al Fine

100



108



♩ = 110

3

118



♩ = 200



# ((\*\*Guadalajara\*\*))

Trombón 2

## Julion

Trans: pafo Chavez  
pacomaldini3@hotmail.com

♩ = 200

10

18

12

A

36

47

56

64

B

73

85

92

D.S. al Fine

100

108

♩ = 110

3

118

♩ = 200

Voz

# ((<sup>\*\*</sup>Guadalajara<sup>\*\*</sup>))

Trombón 3

## Julion

Trans: paço Chavez  
pacomaldini3@hotmail.com

♩ = 200

10

Voz

18

12

A

36

47

56

64

B

73

2

84

1.

91

2. D.S. al Fine

100

108

♩ = 110

3

118

♩ = 200

# ((\*\*Guadalajara\*\*))

Trompeta 1

## Julion

Trans: paço Chavez  
pacomaldini3@hotmail.com

♩ = 200

7  
13 Voz  
18  
23 2  
31 A 2  
37 15  
51  
57  
64 B 5  
70 5  
85 3 1. 2. D.S. al Fine  
93  
98  
104  
110 = 110  
118 = 200

# ((\*\*Guadalajara\*\*))

Trompeta 2

## Julion

Trans: paño Chavez  
pacomaldini3@hotmail.com

♩ = 200

7

13

18

25

31

37

45

51

57

62

68

75

81

85

93

98

105

110

118

2

2

15

5

5

3

1.

2.

D.S. al Fine

Voz

♩ = 110

♩ = 200

# ((\*\*Guadalajara\*\*))

Trompeta 3

## Julion

Trans: paço Chavez  
pacomaldini3@hotmail.com

♩ = 200

7

13 *Voz*

18

25

37 **A**

51

57

64 **B**

75

85

93 *D.S. al Fine*

98

105

110 ♩ = 110

118 ♩ = 200



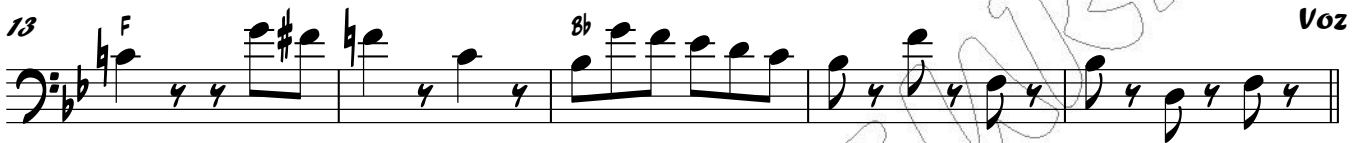
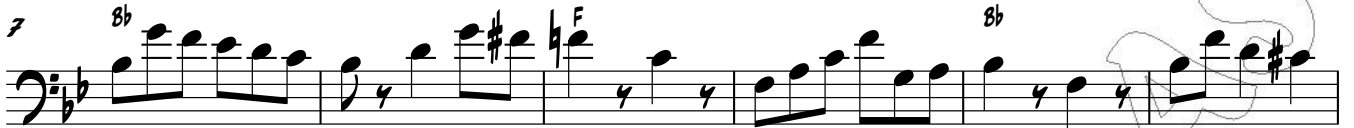
# ((\*\*Guadalajara\*\*))

Tuba

## Julion

Trans: paço Chavez  
pacomaldini3@hotmail.com

$\text{♩} = 200$



Guadalajara Cont....

2

Tuba

59 *F* *B<sup>b</sup>*

64 **B** *C*

69 *F* *B<sup>b</sup>*

75 *C*

81 *F*

87 *C* *F* *C* 1. *F* 2. *D.S. al Fine*

93 *F* *B<sup>b</sup>* *F*

99 *B<sup>b</sup>* *F* *B<sup>b</sup>*

105 *F* *B<sup>b</sup>*

110 *♩ = 110* 7 *♩ = 200* *B<sup>b</sup>*

120