

UBA "ARRIBA EL ROBLE" m.m.

Handwritten musical score for guitar, titled "ARRIBA EL ROBLE" in 6/8 time. The score consists of ten staves of music. The notation includes various rhythmic markings such as 2/4, 3/4, and 4/4, and includes fingerings (1-4) and accents. The piece concludes with a double bar line and a repeat sign.

MARTIN

Empty musical staff

Empty musical staff

T. ROMB
3º "ARRIBA EL ROBLE" M.M.

T.C.T $\frac{6}{8}$

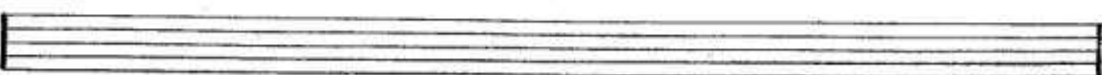
MARTIN

Tromba 2^o

m.m.

"ARRIBA EL ROBLE"

Handwritten musical score for Tromba 2nd part of "ARRIBA EL ROBLE". The score is written on a single staff with a treble clef and a 6/8 time signature. It begins with a key signature of one flat (Bb) and a tempo marking of "m.m.". The music features a melodic line with various ornaments, including slurs and accents, and a rhythmic accompaniment consisting of eighth and sixteenth notes. The score includes several measures of rests and dynamic markings. The word "MARTIN" is written at the end of the piece.



120ms
10

"ARRIBA EL ROBLE"

M.M.

T.C.T

6/8

MARÍN

Tromp. 3^e "ARRIBA EL ROBLE" M.M.

6/8 24 || 35

Handwritten musical notation for the first system, including notes, rests, and dynamic markings.

MARTIN

tromp.
2^a "ARRIBA EL ROBLE" m.m.

$\frac{6}{8}$ 27 || 35

MARIN

T. comp. $\frac{1}{2}$ m.m.
"ARRIBA EL ROBLE"

$\frac{6}{8}$ 24 || 35

Handwritten musical notation for guitar. It begins with a treble clef and a 6/8 time signature. The notation includes several measures with notes, rests, and dynamic markings such as *sf* and *sfz*. There are also some handwritten annotations like '2' and '35'.

MARTÍN CAMPA CAMARERO

Five empty musical staves, likely intended for additional notation or accompaniment.

CLAR. 3^o

M.M.

"ARRIBA EL ROBLE"

Handwritten musical score for Clarinet 3^o. The score is written on ten staves. The first staff shows a treble clef, a 6/8 time signature, and a key signature of one flat (B-flat). The music features a variety of rhythmic patterns, including eighth and sixteenth notes, and rests. There are several dynamic markings, such as *mf* and *f*, and articulation marks like accents and slurs. A first ending bracket is present in the fourth staff. The word "MARTIN" is written in the sixth staff. The score concludes with a double bar line and a final chord symbol.

Two empty musical staves at the bottom of the page.

CLAR.
2º

"ARRIBA EL ROBLE"

M.M.

T.C.-T

Handwritten musical score for Clarinet 2, titled "ARRIBA EL ROBLE". The score is written on ten staves. The first staff shows a treble clef, a key signature of one sharp (F#), and a 6/8 time signature. The music consists of eighth and sixteenth notes, often beamed together. There are various musical notations including slurs, accents, and dynamic markings like 'p' and 'f'. The piece concludes with a double bar line and a repeat sign. The final staff contains a few notes and rests, followed by a double bar line.

MARCA

CLAR.
10

m.m.

"ARRIBA EL ROBLE"

Handwritten musical score for Clarinet in B-flat, titled "ARRIBA EL ROBLE". The score is written on ten staves. The first staff shows a treble clef, a key signature of one flat (B-flat), and a 6/8 time signature. The music consists of a series of rhythmic patterns, primarily eighth and sixteenth notes, with various articulations such as accents, slurs, and breath marks. The notation includes many 'x' marks above notes, likely indicating fingerings or breath points. The piece concludes with a double bar line and a final cadence. The bottom two staves are empty.

MARTÍN

Altos m.m.
"ARRIBA EL ROBLE"

Handwritten musical notation for the first system, including a treble clef, a 6/8 time signature, and various rhythmic figures and chords.

Handwritten musical notation for the second system, starting with a double bar line and a fermata, followed by the name "MARTIN" written on the staff.

Three empty musical staves at the bottom of the page.