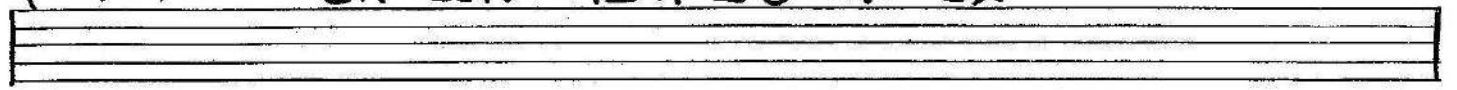
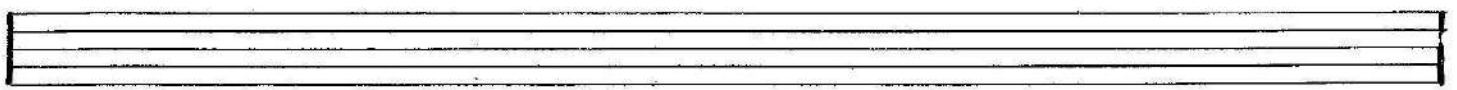
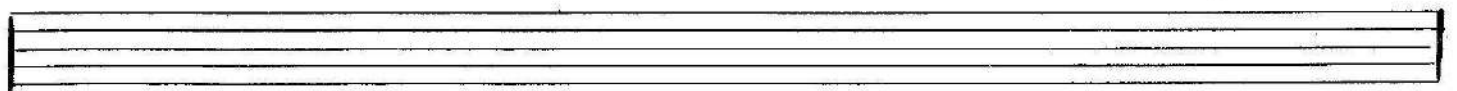
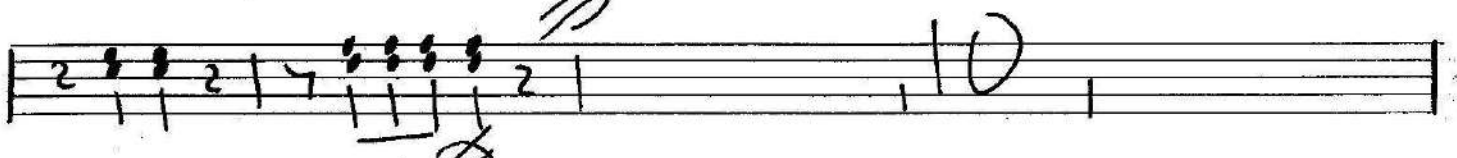


Altos

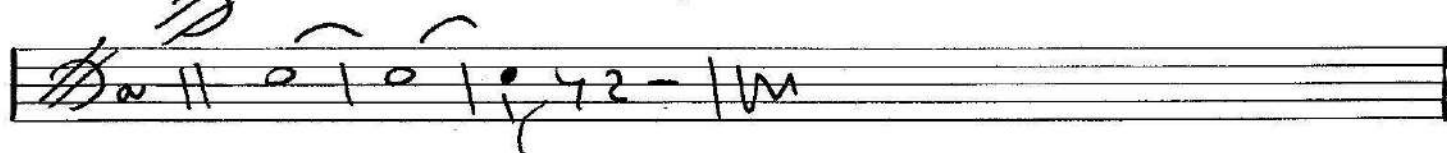
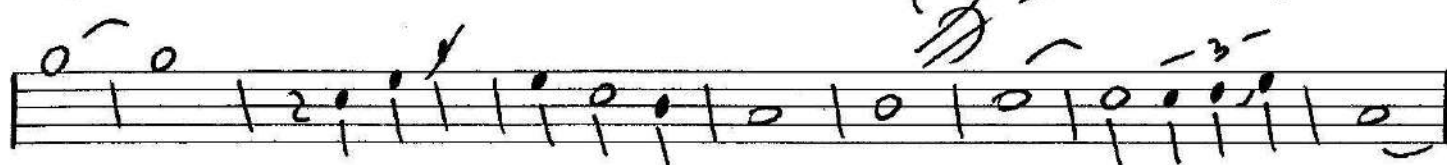
# "LA LLAMADA DE MI EX"



www.lapartiturasinaloense.com  
lapartiturasinaloense@hotmail.com

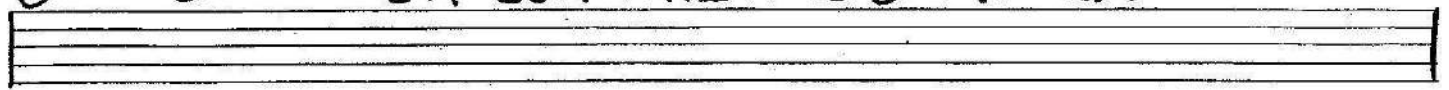


CLAR.  $\frac{1}{2}$  "LA LLAMADA DE MI EX"

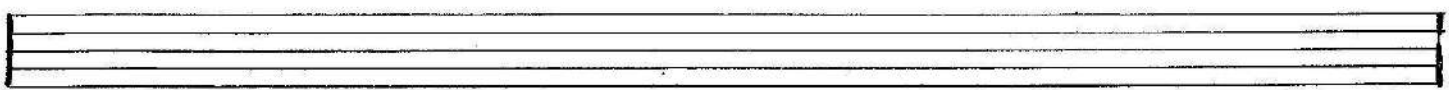
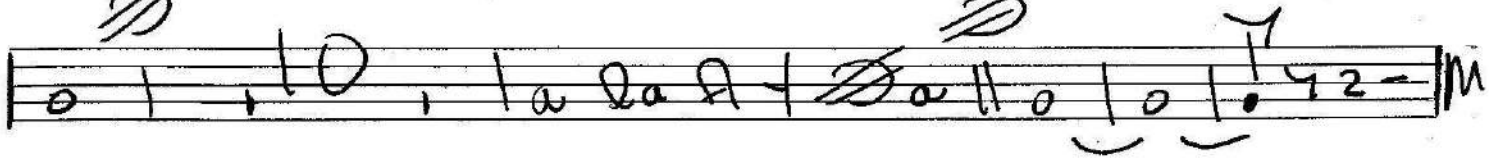
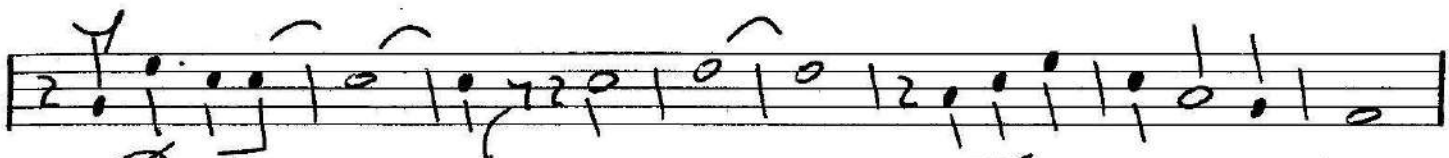
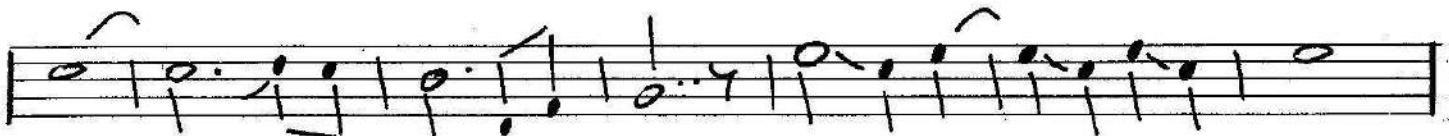


CLAR. 2º

"LA LLAMADA DE MI EX"



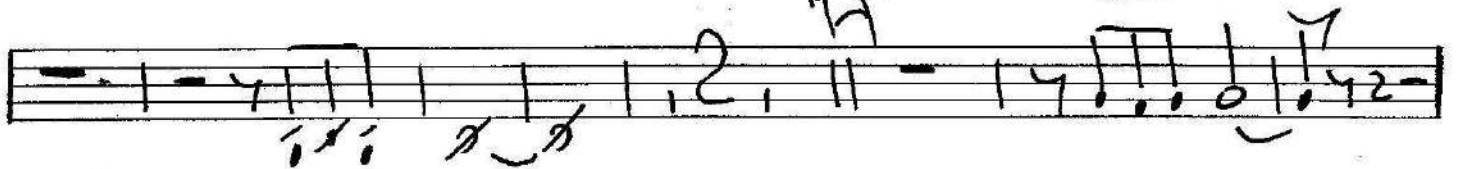
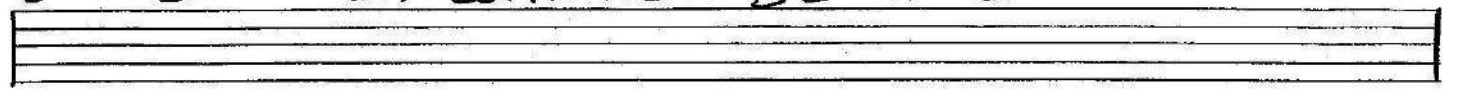
[www.lapartiturasinaloense.com](http://www.lapartiturasinaloense.com)  
[lapartiturasinaloense@hotmail.com](mailto:lapartiturasinaloense@hotmail.com)



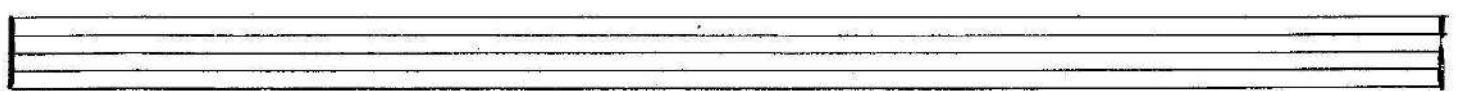
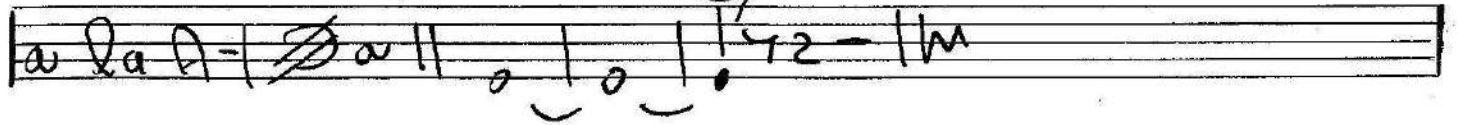
CLAR

3º

"LA LLAMADA DE MI EX"



[www.lapartiturasinaloense.com](http://www.lapartiturasinaloense.com)  
[lapartiturasinaloense@hotmail.com](mailto:lapartiturasinaloense@hotmail.com)



Tromp. 1 2

"LA LLAMADA DE MI EX"

ARRULLADORA

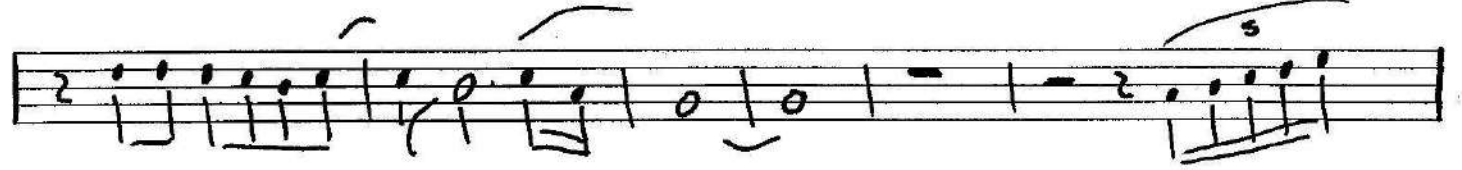
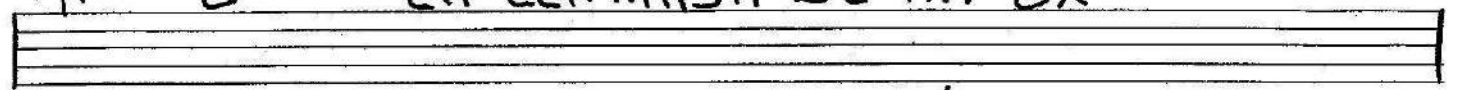
Handwritten musical notation for Trombone 1 and 2. The score consists of ten staves. The first staff begins with a treble clef and a common time signature. The notation includes various note values, rests, and ornaments such as trills and grace notes. There are also some handwritten annotations like '6/0' and '3' above notes.

www.lapartiturasinaloense.com  
lapartiturasinaloense@hotmail.com

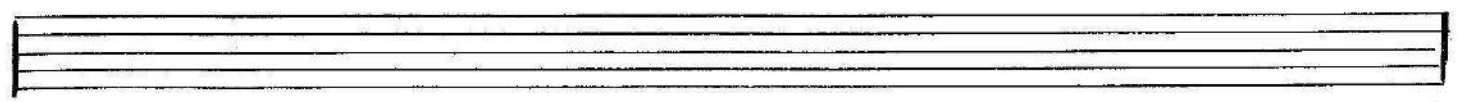
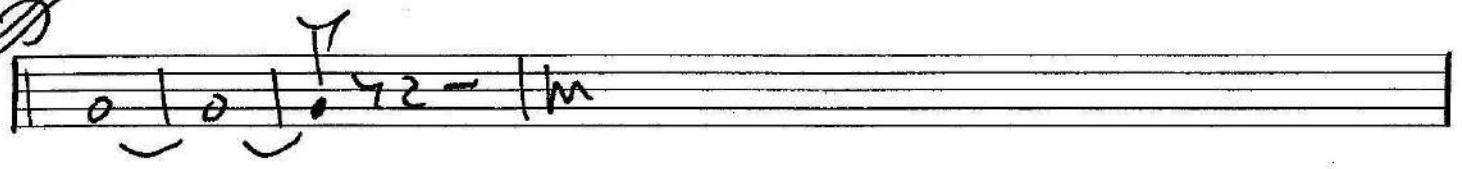
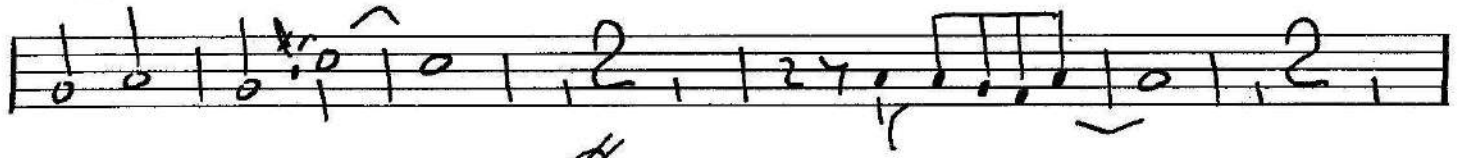
Handwritten musical notation for Trombone 1 and 2, continuing from the previous section. It includes a watermark for 'www.lapartiturasinaloense.com' and 'lapartiturasinaloense@hotmail.com'. The notation features notes, rests, and dynamic markings like 'p' and 'f'. The bottom of the page contains several empty staves.

Tromp. 2<sup>a</sup>

"LA LLAMADA DE MI EX"

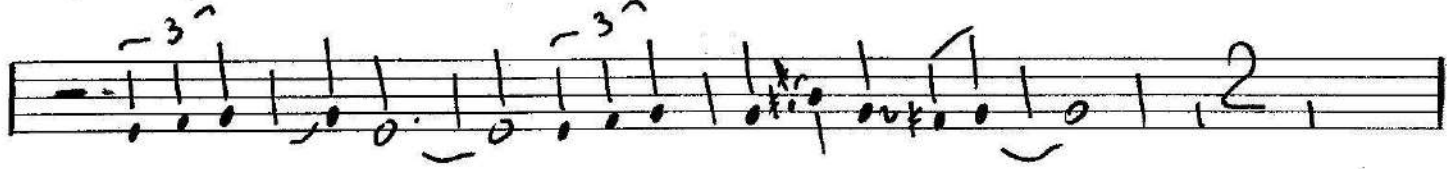
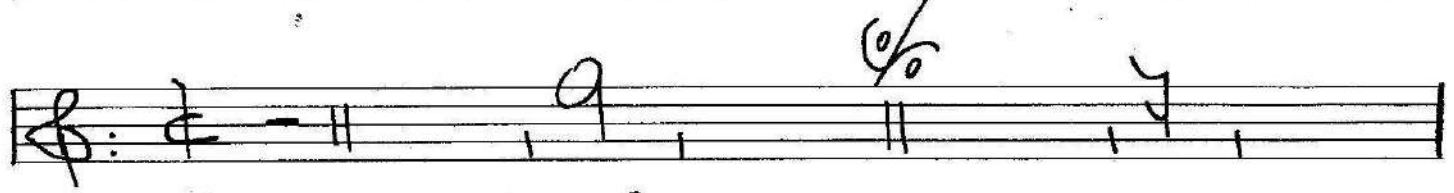
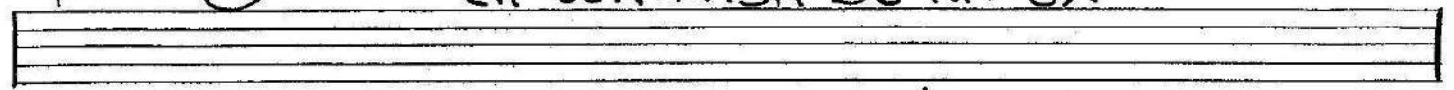


www.lapartiturasinaloense.com  
lapartiturasinaloense@hotmail.com

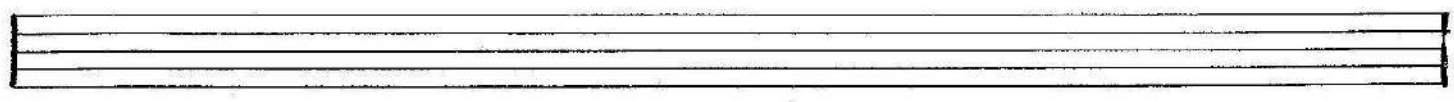
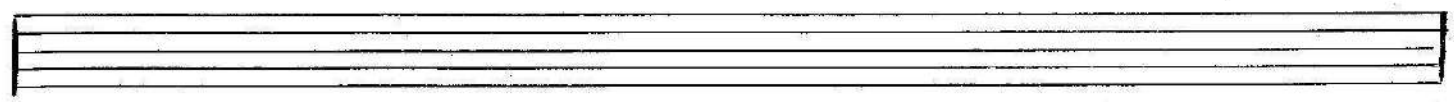
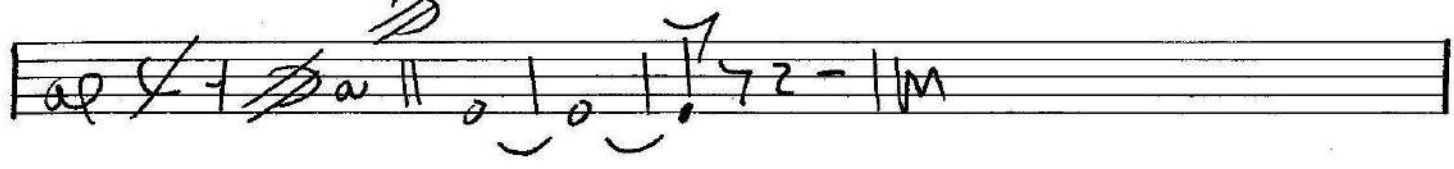


TROMP. 3<sup>a</sup>

"LA LLAMADA DE MI EX"



www.lapartiturasinaloense.com  
lapartiturasinaloense@hotmail.com



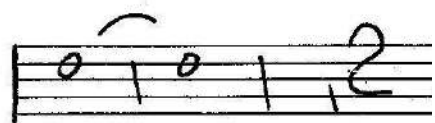
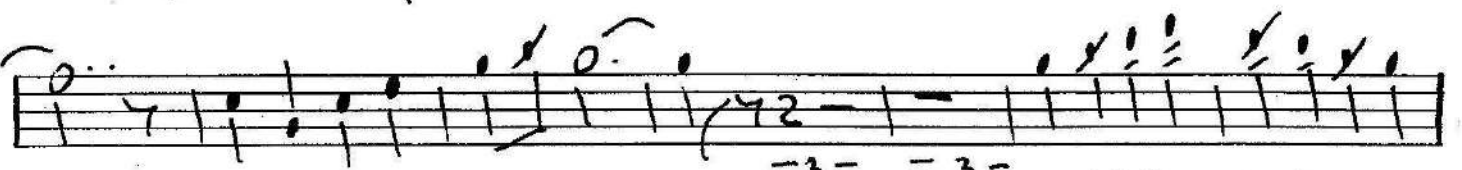
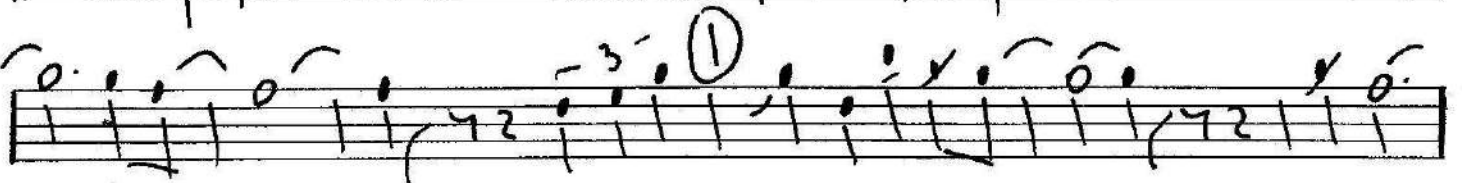
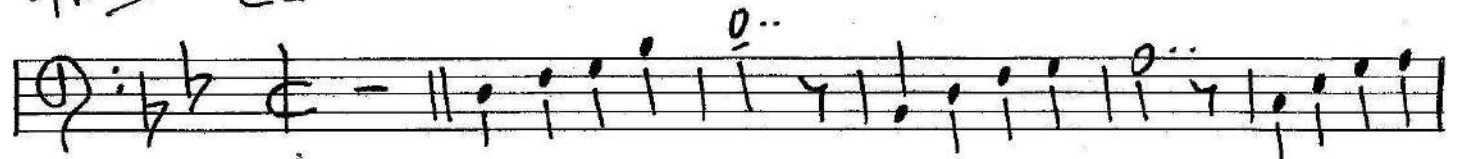
Tromba 1<sup>o</sup> "LA LLAMADA DE MI EX"

Handwritten musical score for Tromba 1<sup>o</sup> in C major, 2/4 time. The score consists of 12 staves. The first staff begins with a treble clef, a key signature of one sharp (F#), and a common time signature (C). The music features a mix of eighth and sixteenth notes, often beamed together, with various articulations such as accents and slurs. The second staff contains a first ending bracketed with a circled '1'. The third staff contains a second ending bracketed with a circled '2'. The fourth staff contains a circled '1' above a measure. The fifth staff contains a circled '2' above a measure. The sixth staff contains a circled '3' above a measure. The seventh staff contains a circled '3' above a measure. The eighth staff contains a circled '3' above a measure. The ninth staff contains a circled '3' above a measure. The tenth staff contains a circled '3' above a measure. The eleventh staff contains a circled '3' above a measure. The twelfth staff contains a circled '3' above a measure. The score is written in a clear, legible hand.

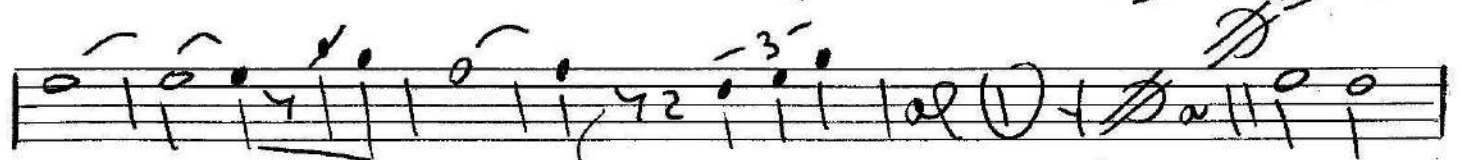
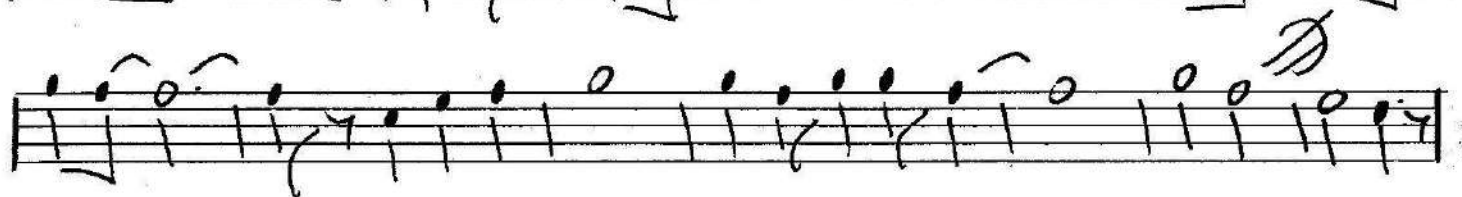
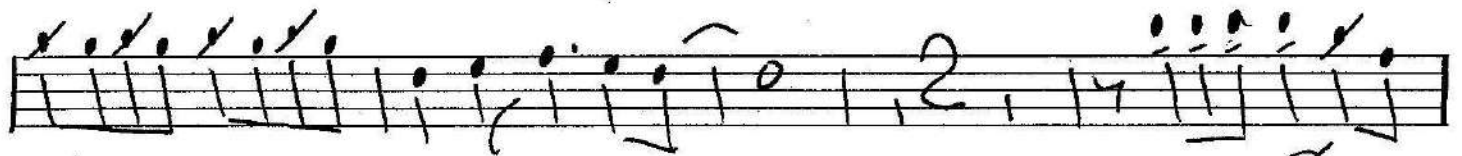
www.lapartiturasinaloense.com  
lapartiturasinaloense@hotmail.com

Continuation of the handwritten musical score for Tromba 1<sup>o</sup> in C major, 2/4 time. The score consists of 12 staves. The first staff begins with a treble clef, a key signature of one sharp (F#), and a common time signature (C). The music features a mix of eighth and sixteenth notes, often beamed together, with various articulations such as accents and slurs. The second staff contains a first ending bracketed with a circled '1'. The third staff contains a second ending bracketed with a circled '2'. The fourth staff contains a circled '1' above a measure. The fifth staff contains a circled '2' above a measure. The sixth staff contains a circled '3' above a measure. The seventh staff contains a circled '3' above a measure. The eighth staff contains a circled '3' above a measure. The ninth staff contains a circled '3' above a measure. The tenth staff contains a circled '3' above a measure. The eleventh staff contains a circled '3' above a measure. The twelfth staff contains a circled '3' above a measure. The score is written in a clear, legible hand.

Tromb. 2o "LA LLAMADA DE MI EX"



www.lapartiturasinaloense.com  
lapartiturasinaloense@hotmail.com



Tromba 3<sup>o</sup> "LA LLAMADA DE MI EX"

The image shows a handwritten musical score for the Tromba 3<sup>o</sup> part of the piece "LA LLAMADA DE MI EX". The score is written on ten staves. The first staff begins with a treble clef, a key signature of one flat (B-flat), and a 3/4 time signature. The music consists of a series of notes, some with slurs and accents. The second staff continues the melody with similar notation. The third staff features a circled '1' above a measure, indicating a first ending. The fourth staff continues the melodic line. The fifth staff includes several triplet markings (indicated by '3' and a slur) over groups of notes. The sixth staff contains a central text block with the website [www.lapartiturasinaloense.com](http://www.lapartiturasinaloense.com) and the email address [lapartiturasinaloense@hotmail.com](mailto:lapartiturasinaloense@hotmail.com), flanked by musical notation. The seventh staff continues the melody. The eighth staff features a double bar line with a sharp sign (F#) above it, indicating a key change. The ninth staff continues the piece with triplet markings. The tenth staff concludes the piece with a double bar line and a sharp sign (F#) above it.

TUBA

# "LA LLAMADA DE MI EX"

Handwritten musical score for Tuba, titled "LA LLAMADA DE MI EX". The score consists of 12 staves of music. It begins with a treble clef, a common time signature (C), and a key signature of one sharp (F#). The notation includes various note values (quarter, eighth, and sixteenth notes), rests, and dynamic markings such as 'p' (piano) and 'f' (forte). There are also performance instructions like 'A' and '3' (triplets). The piece concludes with a double bar line and a repeat sign.