

LA MACHACA

CUMBIA

LOS RECORDITOS

7

www.lapartiturasinaloense.com

Cel: (449)1149163

CLARINETE 1

10

15

19

28

32

36

39

44

48

52

1.

56

2.

LA MACHACA

CUMBIA

LOS RECODITOS

7

www.lapartiturasinaloense.com

Cel: (449)1149163

CLARINETE 2

10 *GLISS.*

15

19 *VOZ* *GLISS.* 6

28 1 *GLISS.*

32 2

36

39 1. 2.

44 *AL. 2 VECES. A A B Y SIGUE* *GLISS.*

48

LA MACHACA

CUMBIA

LOS RECORDITOS

7

www.lapartiturasinaloense.com

Cel: (449)1149163

CLARINETE 3

10

15

19

28

32

36

39

44

48

Musical score for LA MACHACA-CLAR 3, measures 52-56. The score is written in treble clef with a key signature of one sharp (F#). Measure 52 begins with a treble clef, a sharp sign, and a series of eighth notes: G4, A4, B4, C5, B4, A4, G4. A double bar line follows. Measure 53 starts with a first ending bracket labeled '1.' above it, containing five eighth notes with accents: G4, A4, B4, C5, B4. Measure 54 contains two eighth notes with accents: G4, A4. Measure 55 contains a quarter rest followed by a quarter note G4 with an accent. Measure 56 starts with a second ending bracket labeled '2.' above it, containing a quarter rest followed by a quarter note G4 with an accent. The piece concludes with a double bar line.

LA MACHACA

CUMBIA

LOS RECODITOS

www.lapartiturasinaloense.com

Cel: (449)1149163

TROMBÓN 1

7

10

GLISS.

15

19

A

Voz

2

6

29

1

2

B

2

35

13

AL ~~S~~ 2 VECES.
A A B Y SIGUE

GLISS.

50

55

1

59

2

LA MACHACA

CUMBIA

LOS RECODITOS

www.lapartiturasinaloense.com

Cel: (449)1149163

TROMBÓN 2

7

10

GLISS.

14

18

A VOZ

2 6

29

1 2 B 2

35

13

AL. 2 VECES.
A A B Y SIGUE

GLISS.

50

54

57

1

60

2 3

LA MACHACA

CUMBIA

LOS RECODITOS

www.lapartiturasinaloense.com

Cel: (449)1149163

TROMBÓN 3

7

10

GLISS.

14

18

A VOZ

2 6

29

1 2 B 2 2

35

13

AL 2 VECES.
A A B Y SIGUE

GLISS.

50

54

57

1

60

2 3

LA MACHACA

CUMBIA

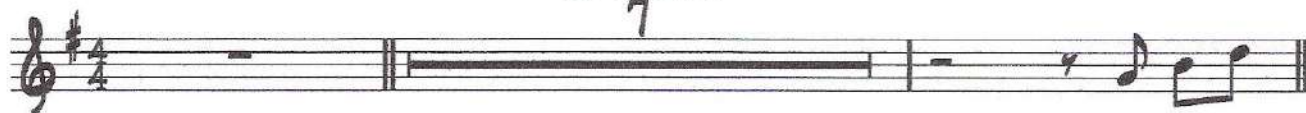
LOS RECODITOS

7

www.lapartiturasinaloense.com

Cel: (449)1149163

TROMPETA 1



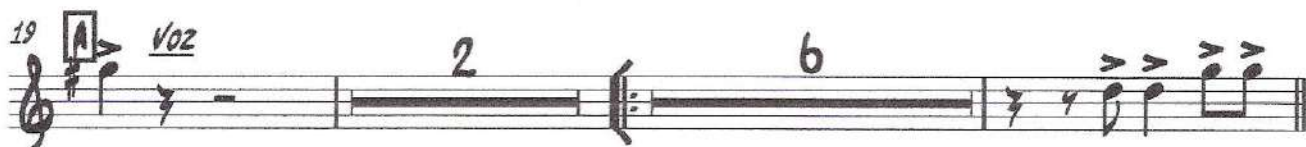
10



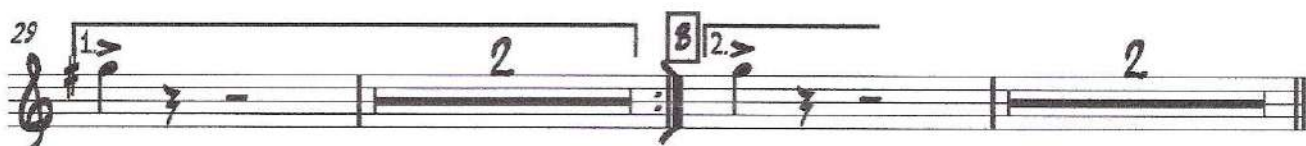
15



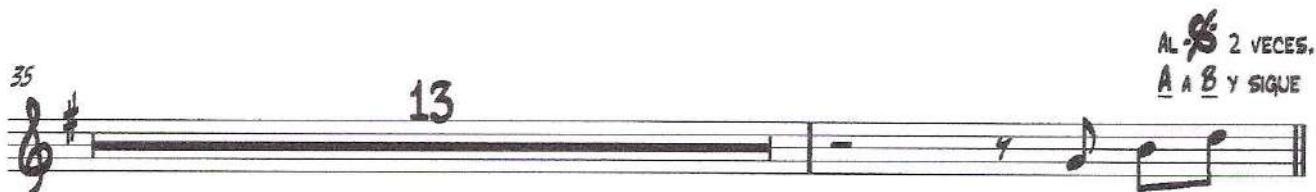
19




29

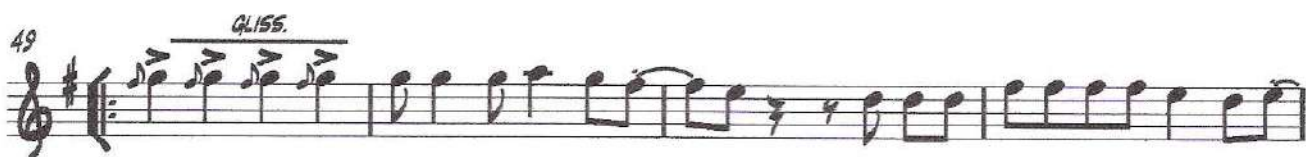


35

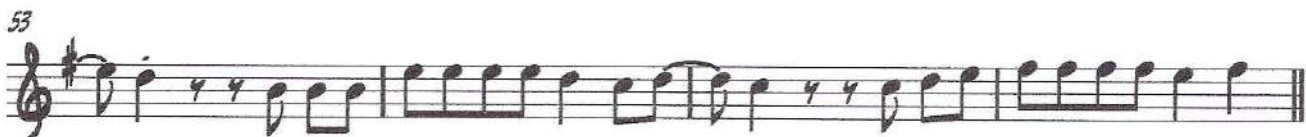


AL  2 VECES.
A A B Y SIGUE

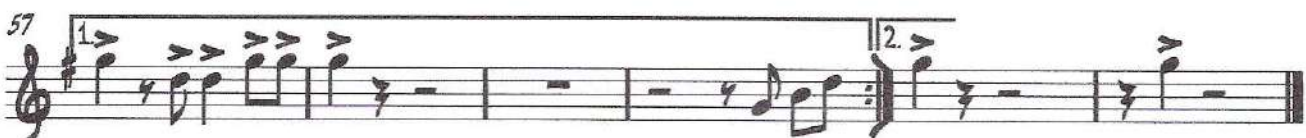
49



53



57



LA MACHACA

CUMBIA

LOS RECODITOS

7

www.lapartiturasinaloense.com

Cel: (449)1149163

TROMPETA 2

10 *GLISS.*

15

19 *VOZ*

29

35

AL *GLISS.* 2 VECES.
A A B Y SIGUE

49 *GLISS.*

53

57

LA MACHACA

CUMBIA

LOS RECORDITOS

7

www.lapartiturasinaloense.com

Cel: (449)1149163

TROMPETA 3

10 *GLISS.*

15

19 *VOZ*

29

35

AL *GLISS.* 2 VECES.
A A B Y SIGUE

49 *GLISS.*

53

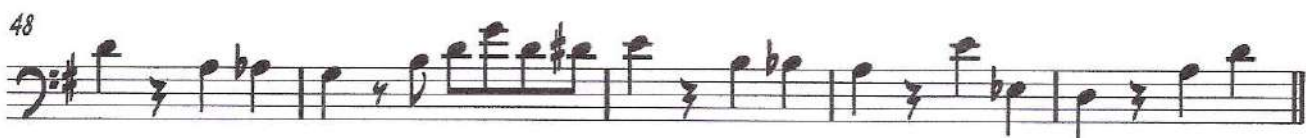
57

LA MACHACA

CUMBIA
LOS RECODITOS

www.lapartiturasinaloense.com

Cel: (449)1149163



Musical score for 'LA MACHACA-TUSA' in bass clef. The score consists of two staves. The first staff begins at measure 53 and contains a first ending with six measures of music, ending with a repeat sign. The second staff begins at measure 56 and contains a second ending with six measures of music, ending with a double bar line. A triplet of eighth notes is indicated by a '3' below the notes in the final measure of the second ending. The key signature has one sharp (F#) and the time signature is 4/4.