

CLAR. 2º

"LA MARÍA"

JULIÓNA.

BANDA_SANJUANBAUTISTA@HOTMAIL.COM

MARTIN CAMPA CAMARGO

BRAVO#201 RINCON DE TAMAYO GTO.

TEL.01 461 66 2 03 90 CEL.461 1348422

CLAR. 1^o

"LA MARÍA"

JULIÁN
ALVAREZ

Handwritten musical score for Clarinet 1, titled "LA MARÍA" by Julián Álvarez. The score is written on ten staves. It begins with a treble clef, a key signature of three sharps (F#, C#, G#), and a 4/4 time signature. The notation includes various rhythmic values, rests, and dynamic markings. There are several measure numbers written above the staves: 1, 4, 17, 20, 15, and 4. The score concludes with a double bar line and a repeat sign.

BANDA_SANJUANBAUTISTA@HOTMAIL.COM

MARTIN CAMPA CAMARGO

BRAVO#201 RINCON DE TAMAYO GTO.

TEL.01 461 66 2 03 90 CEL.461 1348422

CLAR. 3º

"LA MARÍA"

JULIÁN A.

Handwritten musical notation for the first system, including a treble clef, a key signature of two sharps (F# and C#), and a 4/4 time signature. The notation consists of four staves with various notes, rests, and dynamic markings.

Handwritten musical notation for the second system, starting with a double bar line and the number '20'. It includes a section marked 'A' and ends with the number '15'.

Handwritten musical notation for the third system, featuring a treble clef, a key signature of one sharp (F#), and a 4/4 time signature. The notation includes notes, rests, and dynamic markings.

Handwritten musical notation for the fourth system, featuring a treble clef, a key signature of one sharp (F#), and a 4/4 time signature. The notation includes notes, rests, and dynamic markings.

Handwritten musical notation for the fifth system, featuring a treble clef, a key signature of one sharp (F#), and a 4/4 time signature. The notation includes notes, rests, and dynamic markings.

Two empty musical staves.

BANDA_SANJUANBAUTISTA@HOTMAIL.COM

MARTIN CAMPA CAMARGO

BRAVO#201 RINCON DE TAMAYO GTO.

TEL.01 461 66 2 03 90 CEL.461 1348422

Tromp. 1/2

"LA MARIA"

JULIÁN
ALVAREZ

Handwritten musical notation for Trompe 1/2, measures 1-8. The notation includes a treble clef, a key signature of two sharps (F# and C#), and a common time signature (C). The melody is written on a single staff with various note values and rests. Measure numbers 1, 4, and 8 are clearly marked. There are also some handwritten annotations like '0' and 'y' above the notes.

Handwritten musical notation for Trompe 1/2, measure 20. The notation shows a single staff with a measure rest for 20 measures, indicated by a double bar line and the number 20.

Handwritten musical notation for Trompe 1/2, measure 22. The notation shows a single staff with a measure rest for 22 measures, indicated by a double bar line and the number 22.

Handwritten musical notation for Trompe 1/2, measure 20. The notation shows a single staff with a measure rest for 20 measures, indicated by a double bar line and the number 20.

Handwritten musical notation for Trompe 1/2, measures 20-22. The notation shows a single staff with a measure rest for 20 measures, followed by measures 21 and 22. The notation includes various note values and rests.

BANDA_SANJUANBAUTISTA@HOTMAIL.COM
MARTIN CAMPA CAMARGO
BRAVO#201 RINCON DE TAMAYO GTO.
TEL.01 461 66 2 03 90 CEL.461 1348422

Tromp. 2^a

"LA MARÍA"

JULIÁN A.

Handwritten musical notation for the first system, including a treble clef, key signature of two sharps (F# and C#), and a common time signature. The notation includes notes, rests, and dynamic markings such as accents (>) and slurs. Measure numbers 4, 8, and 20 are indicated.

Handwritten musical notation for the second system, showing a measure rest for 20 measures.

Handwritten musical notation for the third system, starting with a treble clef and a common time signature, followed by a measure rest for 22 measures.

Handwritten musical notation for the fourth system, showing a measure rest for 20 measures followed by a treble clef and a common time signature.

Handwritten musical notation for the fifth system, including notes, rests, and dynamic markings. Measure numbers 20 and 22 are indicated.

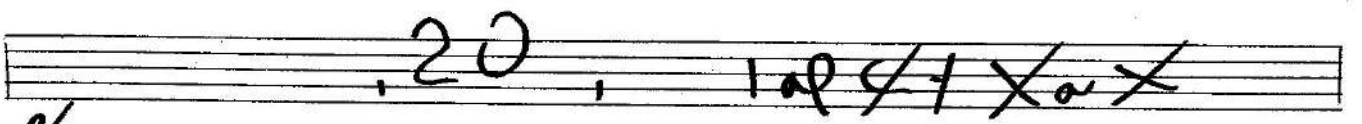
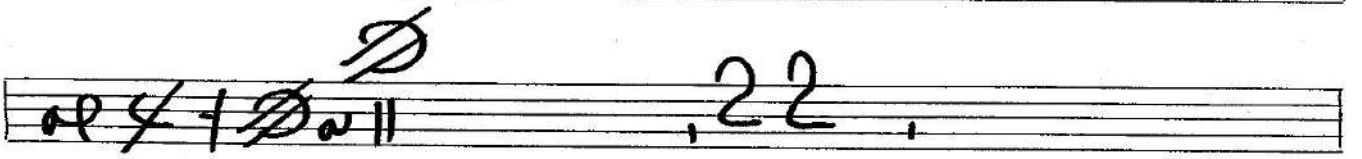
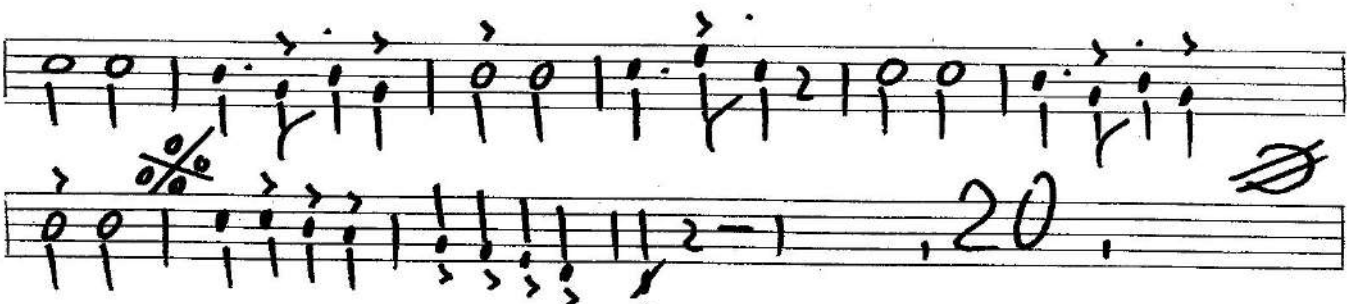
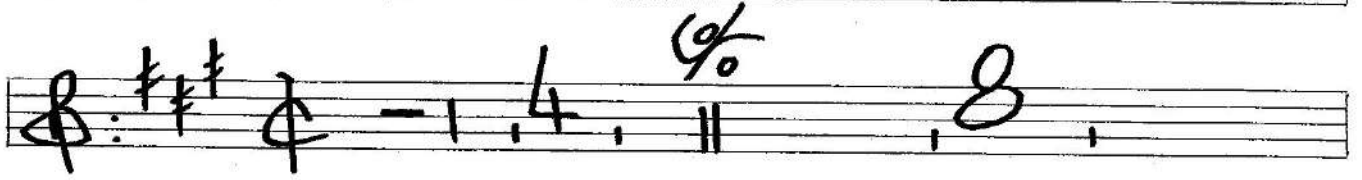
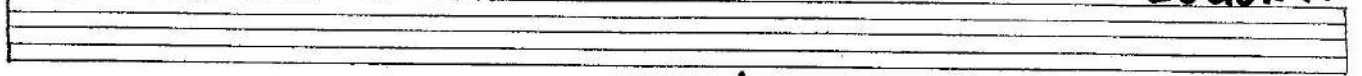
Empty musical staff.

BANDA_SANJUANBAUTISTA@HOTMAIL.COM
MARTIN CAMPA CAMARGO
BRAVO#201 RINCON DE TAMAYO GTO.
TEL.01 461 66 2 03 90 CEL.461 1348422

Tromp. 3^a

"LA MARÍA"

JUVEN A.



BANDA_SANJUANBAUTISTA@HOTMAIL.COM

MARTIN CAMPA CAMARGO

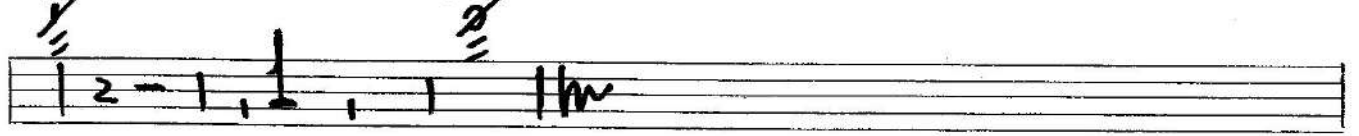
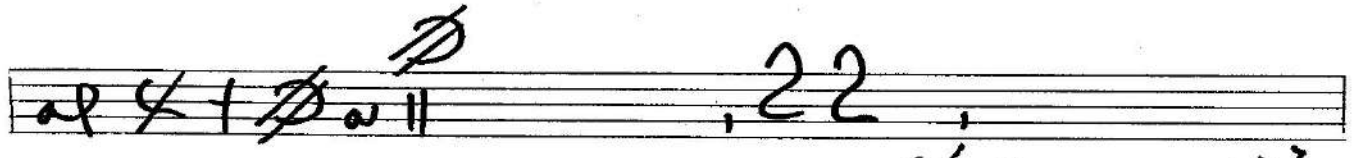
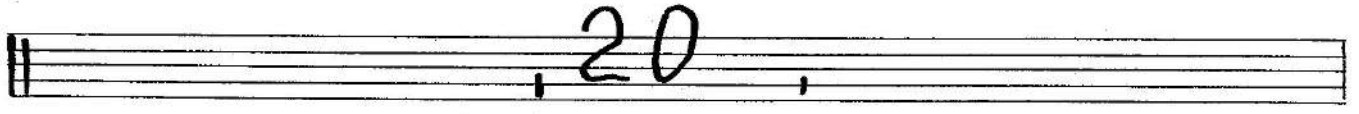
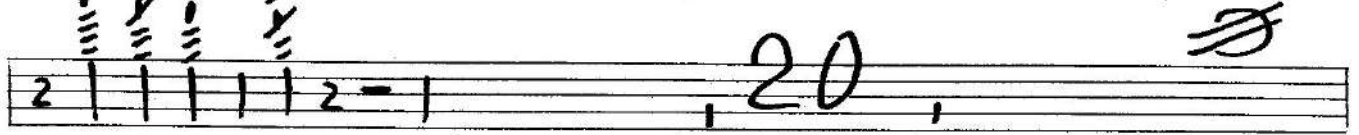
BRAVO#201 RINCON DE TAMAYO GTO.

TEL.01 461 66 2 03 90 CEL.461 1348422

TROMB. 1^o

"LA MARÍA"

JULIÁN A.

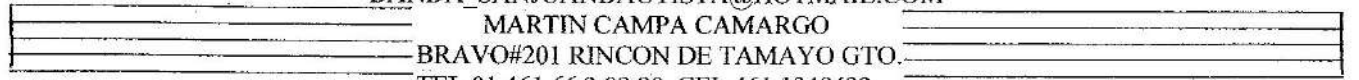


BANDA_SANJUANBAUTISTA@HOTMAIL.COM

MARTIN CAMPA CAMARGO

BRAVO#201 RINCON DE TAMAYO GTO.

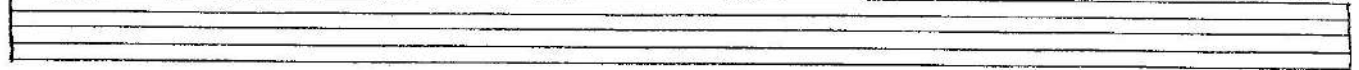
TEL.01 461 66 2 03 90 CEL.461 1348422



Tromba 2º

"LA MARIA"

JULIÁN A.

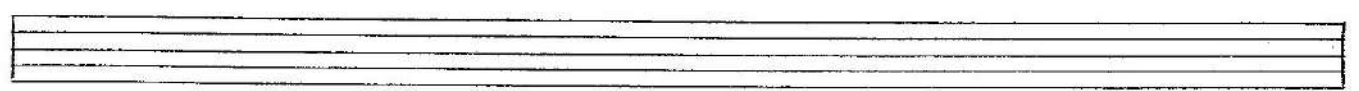


Musical notation for Tromba 2º, measures 1-20. Includes a treble clef, a key signature of one sharp (F#), and a common time signature (C). The notation consists of a series of vertical stems with various accents and slurs. Measure numbers 4, 8, 12, 16, and 20 are indicated. A double bar line with repeat dots is present at the end of measure 20.

Musical notation for Tromba 2º, measure 20. A double bar line with repeat dots is present.

Musical notation for Tromba 2º, measure 22. Includes a treble clef, a key signature of one sharp (F#), and a common time signature (C). A double bar line with repeat dots is present.

Musical notation for Tromba 2º, measures 20-22. Includes a treble clef, a key signature of one sharp (F#), and a common time signature (C). The notation consists of a series of vertical stems with various accents and slurs. Measure numbers 20, 22, and 24 are indicated. A double bar line with repeat dots is present at the end of measure 24.



BANDA SANJUANBAUTISTA@HOTMAIL.COM

MARTIN CAMPA CAMARGO

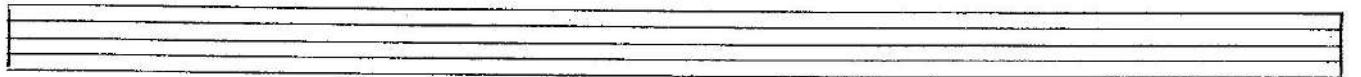
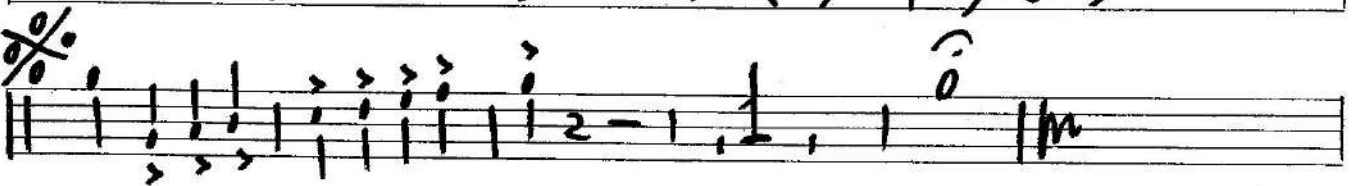
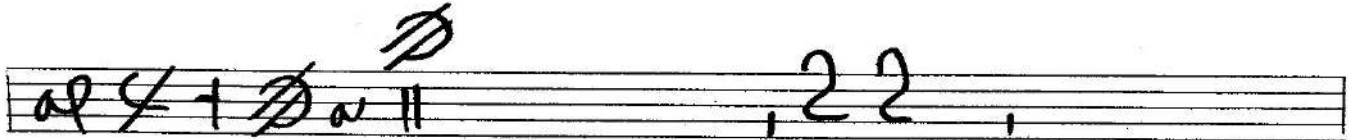
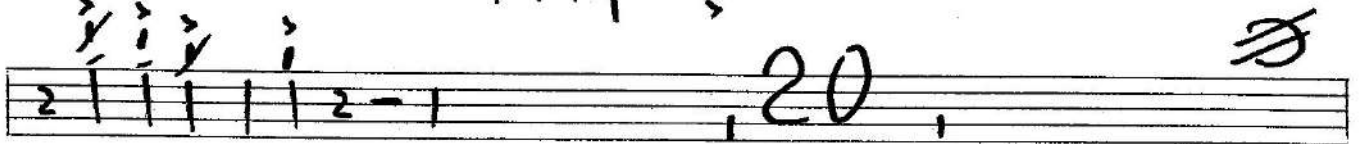
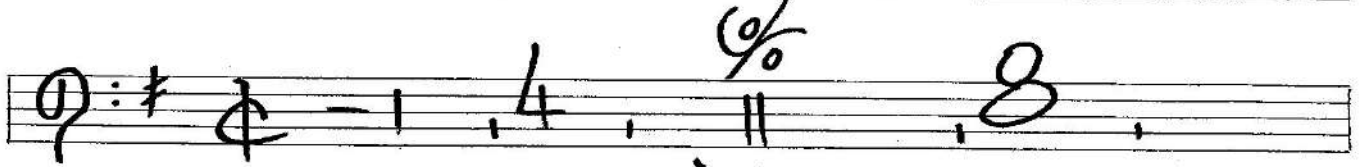
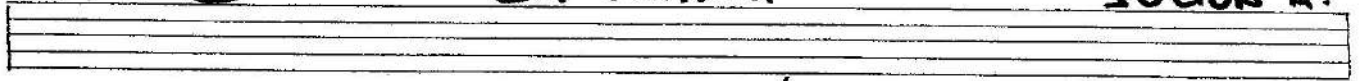
BRAVO#201 RINCON DE TAMAYO GTO.

TEL.01 461 66 2 03 90 CEL.461 1348422

Tromb. 3^o

"LA MARÍA"

JULIÁN A.



BANDA_SANJUANBAUTISTA@HOTMAIL.COM

MARTIN CAMPA CAMARGO

BRAVO#201 RINCON DE TAMAYO GTO.

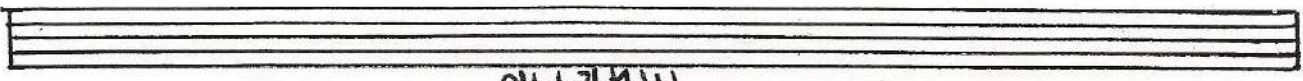
TEL.01 461 66 2 03 90 CEL.461 1348422

TUBA

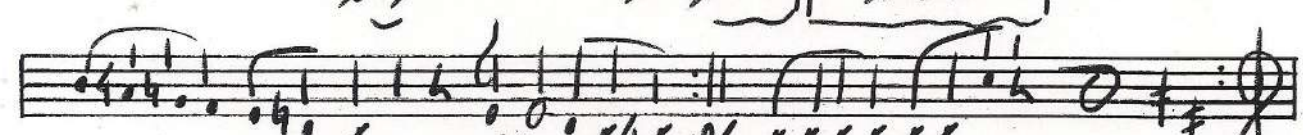
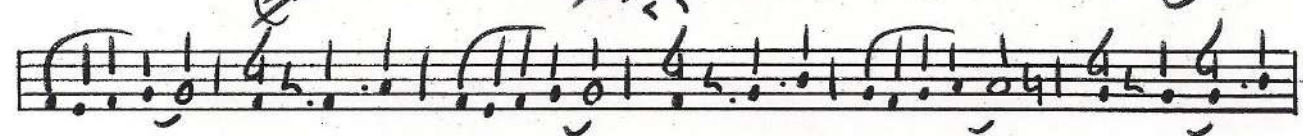
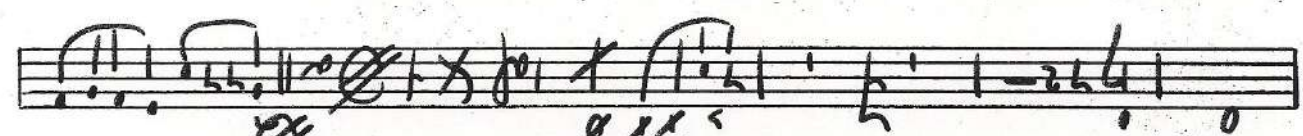
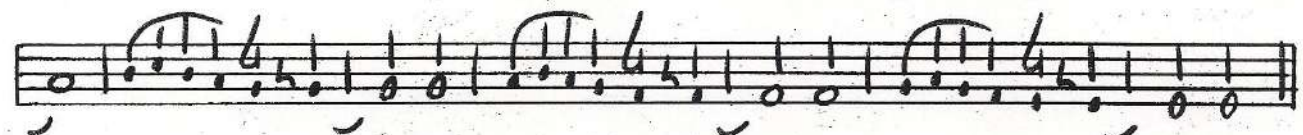
"LA MARÍA"

JULIÁN
ALVAREZ

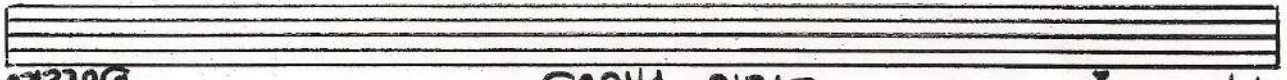
Handwritten musical score for Tuba, titled "LA MARÍA" by Julián Álvarez. The score consists of 12 staves of music. It begins with a treble clef, a key signature of two sharps (F# and C#), and a 3/4 time signature. The notation includes various rhythmic values such as quarter, eighth, and sixteenth notes, as well as rests. There are numerous slurs and accents throughout the piece. A dynamic marking "F" (forte) appears on the fourth staff. The score concludes with a double bar line and a repeat sign. A circled number "1" is written above the eighth staff.



MARIN



Handwritten musical notation and symbols



COLETO

" C'EN ANOS "

Composiçã
Jã



BANDA
M.M