

-**LA MILPA**-

CLARINETE 1 EN Sib

15/Enero/2017

"EL COYOTE (INSTRUMENTAL)"

W/5554775498

F/Venta de partituras y transcripciones para banda

♩=140 ♩

6 13

2-7 9-21

25

35

45

53

TO CODA

60

1. 2.

D.S. AL CODA

68

-**LA MILPA**-

CLARINETE 2 EN Sib

15/Enero/2017

"EL COYOTE (INSTRUMENTAL)"

W/5554775498

F/Venta de partituras y transcripciones para banda

$\text{♩} = 140$ ♩ 20
2-21

27

37

48

57 *TØ CODA* 1. 2. *D.S. AL CODA*

68 ♩

-**LA MILPA**-

CLARINETE 3 EN SIb

15/Enero/2017

"EL COYOTE (INSTRUMENTAL)"

W/5554775498

F/Venta de partituras y transcripciones para banda

♩=140 ♩

20
2-21

27

37

48

57 To CODA 1. 2. D.S. AL CODA

68 ♩

-**LA MILPA**-

Trombón 1 en Sib

15/Enero/2017

"EL COYOTE (INSTRUMENTAL)"

W/5554775498

F/Venta de partituras y transcripciones para banda

♩=140 $\frac{2}{4}$

13
2-14

21
25-27 3 3

31
3 3 14
34-47

50
8 1. 4 2. 3 D.S. AL CODA
51-58 60-63 64-66

68

-**LA MILPA**-

TROMBÓN 2 EN Si \flat

15/Enero/2017

"EL COYOTE (INSTRUMENTAL)"

W/5554775498

F/Venta de partituras y transcripciones para banda

$\text{♩} = 140$ ♩

13
2-14

21
22-23
27-28

31
34-47

50
51-58
60-63
64-66

68

TO CODA 1. 4 2. 3 D.S. AL CODA

-**LA MILPA**-

TROMBÓN 3 EN Si \flat

15/Enero/2017

"EL COYOTE (INSTRUMENTAL)

W/5554775498

F/Venta de partituras y transcripciones para banda

$\text{♩} = 140$ ♩

13
2-14

21
4
22-25

32
3 3
14
34-47

50
8
TO CODA
1. 4
2. 3
D.S. AL CODA
51-58 60-63 64-66

68

-**LA MILPA**-

TROMBÓN 2 EN C

15/Enero/2017

"EL COYOTE (INSTRUMENTAL)

W/5554775498

F/Venta de partituras y transcripciones para banda

Musical score for Trombone 2 in C, "El Coyote (Instrumental)". The score is written in bass clef with a key signature of one flat (Bb) and a time signature of 2/4. The tempo is marked as quarter note = 140. The score consists of six systems of music, with measure numbers and rehearsal marks indicated.

System 1: Measures 1-14. Rehearsal mark 13. Measure 14 contains a fermata.

System 2: Measures 15-28. Rehearsal mark 20. Measure 20 contains a fermata. Rehearsal mark 22-23. Rehearsal mark 27-28. Measure 28 contains a fermata.

System 3: Measures 29-47. Rehearsal mark 30. Measures 30-33 contain triplets. Rehearsal mark 34-47. Measure 47 contains a fermata.

System 4: Measures 48-58. Rehearsal mark 48. Measure 51-58. Measure 58 contains a fermata. The instruction "TO CODA" is written above the staff.

System 5: Measures 59-66. Rehearsal mark 1. Measures 60-63. Rehearsal mark 2. Measures 64-66. The instruction "D.S. AL CODA" is written above the staff.

System 6: Measures 67-70. Rehearsal mark 69. Measure 70 contains a fermata.

-**LA MILPA**-

TROMBÓN 3 EN C

15/Enero/2017

"EL COYOTE (INSTRUMENTAL)"

W/5554775498

F/Venta de partituras y transcripciones para banda

♩=140 ♩

13
2-14

21
4
22-25

32
3 3
14
34-47

50
8
10 CODA
1. 4
2. 3 D.S. AL CODA
51-58 60-63 64-66

68

-**LA MILPA**-

TROMBÓN EN C

15/Enero/2017

"EL COYOTE (INSTRUMENTAL)"

W/5554775498

F/Venta de partituras y transcripciones para banda

Musical score for Trombone in C, titled "EL COYOTE (INSTRUMENTAL)". The score is in 2/4 time with a tempo of 140. It consists of six systems of music. The first system starts with a 2-measure rest, followed by a 13-measure phrase (measures 2-14). The second system begins with a 20-measure phrase, followed by a 3-measure phrase (measures 25-27) and two 3-measure phrases. The third system starts with a 31-measure phrase, followed by a 14-measure phrase (measures 34-47). The fourth system begins with a 49-measure phrase, followed by an 8-measure phrase (measures 51-58) and a section marked "TO CODA". The fifth system features a first ending of 4 measures (measures 60-63) and a second ending of 3 measures (measures 64-66), with the instruction "D.S. AL CODA". The sixth system starts at measure 69 and concludes the piece.

-**LA MILPA**-

TROMPETA 1 EN Sib

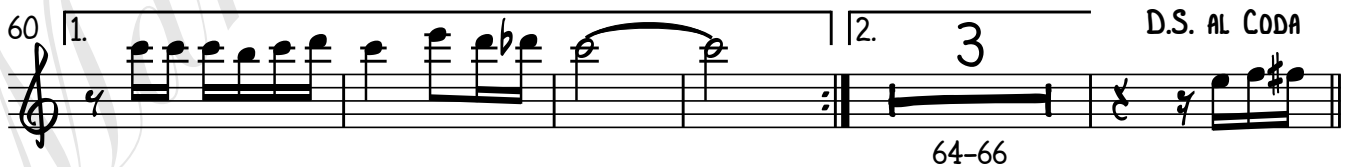
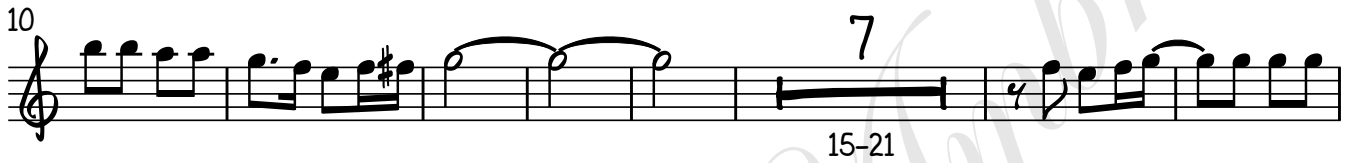
15/Enero/2017

"EL COYOTE (INSTRUMENTAL)"

W/5554775498

F/Venta de partituras y transcripciones para banda

$\text{♩} = 140$ ♩



-**LA MILPA**-

TROMPETA 2 EN Sib

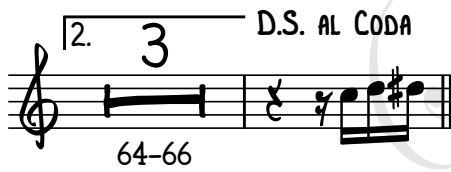
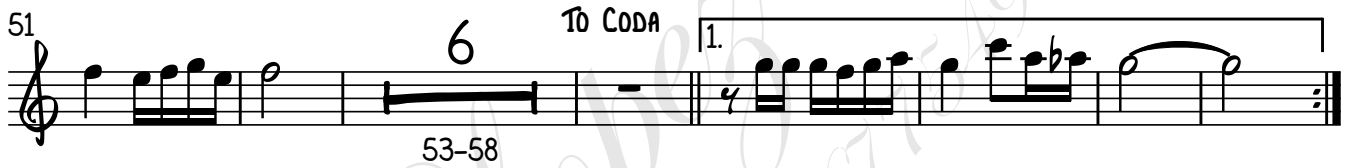
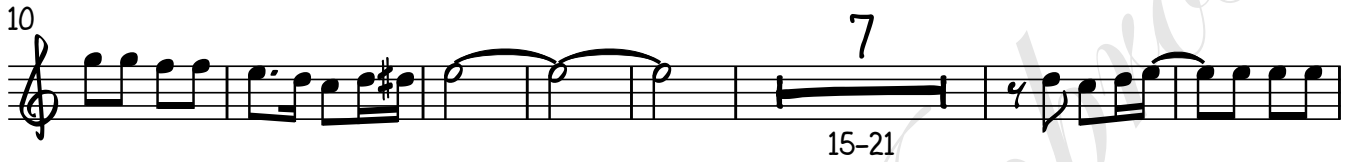
15/Enero/2017

"EL COYOTE (INSTRUMENTAL)"

W/5554775498

F/Venta de partituras y transcripciones para banda

$\text{♩} = 140$ ♩



-**LA MILPA**-

TROMPETA 3 EN SIb

15/Enero/2017

"EL COYOTE (INSTRUMENTAL)"

W/5554775498

F/Venta de partituras y transcripciones para banda

$\text{♩} = 140$ ♩

10 7 15-21

24

10 3 33-42 47-49

51 6 53-58 TO CODA 1.

2. 3 D.S. AL CODA 64-66

-**LA MILPA**-

SAXOR EN Mi♭

15/Enero/2017

"EL COVOTE (INSTRUMENTAL)

W/5554775498

F/Venta de partituras y transcripciones para banda

♩=140

1.

9.

17.

25.

33.

41.

49.

57. **TÓ CODA**

65. **D.S. AL CODA**

69.

-**LA MILPA**-

BAJO EN Si**b**

15/Enero/2017

"EL COYOTE (INSTRUMENTAL)

W/5554775498

F/Venta de partituras y transcripciones para banda

$\text{♩} = 140$ ♩

8

15

22

30

37

44

51

58 **TO CODA** 1. 2.

65 **D.S. AL CODA**

2

BAJO EN S \flat

69



-**LA MILPA**-

TUBA EN Sib

15/Enero/2017

"EL COYOTE (INSTRUMENTAL)"

W/5554775498

F/Venta de partituras y transcripciones para banda

$\text{♩} = 140$ ♩

8

16

23

31

38

46

53

60

67

D.S. AL CODA

TO CODA