

" LINDA AMERICA "

A
Clarinet in B \flat 1

CHUY LIZARRAGA

$\text{♩} = 200$

7

13

18

24

29

34

45

50

71

118

124

129

" LINDA AMERICA "

A
Clarinet in B \flat 2

CHUY LIZARRAGA

$\text{♩} = 200$

7

13

18

24

29

34

45

50

71

118

124

129

" LINDA AMERICA "

A
Clarinet in Bb 3

CHUY LIZARRAGA

♩ = 200

7

13

18

24

29

34

45

50

71

118

124

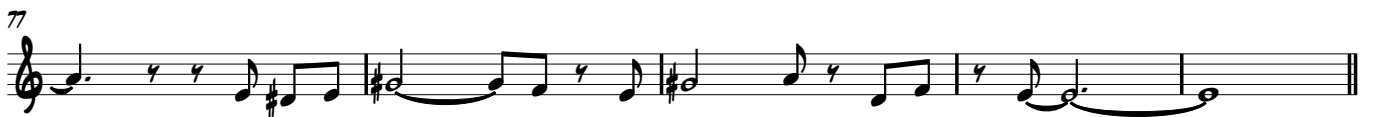
129

" LINDA AMERICA "

A Trumpet in B \flat 3

CHUY LIZARRAGA

$\text{♩} = 200$

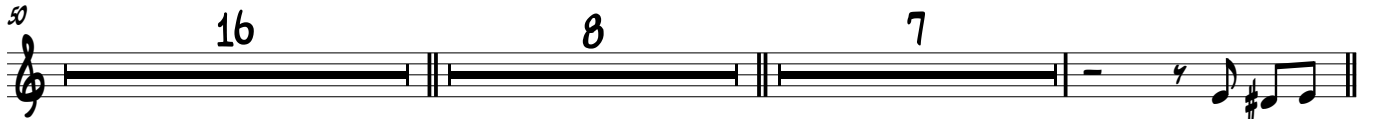
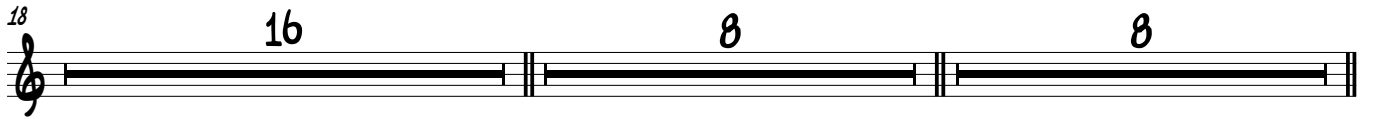


" LINDA AMERICA "

A
Trombón

CHUY LIZARRAGA

♩ = 200



" LINDA AMERICA "

A
Trombone 1

♩ = 200

CHUY LIZARRAGA

Musical staff 1 (measures 1-6)

7 Musical staff 2 (measures 7-11)

12 Musical staff 3 (measures 12-17)

18 Musical staff 4 (measures 18-24) with rests of 16, 8, and 8 measures.

50 Musical staff 5 (measures 25-31) with rests of 16, 8, and 7 measures.

82 Musical staff 6 (measures 32-41)

88 Musical staff 7 (measures 42-51) with a triplet of 3 notes.

93 Musical staff 8 (measures 52-61) with a triplet of 3 notes.

99 Musical staff 9 (measures 62-71) with a rest of 9 measures.

112 Musical staff 10 (measures 72-81) with a triplet of 3 notes.

118 Musical staff 11 (measures 82-91)

124 Musical staff 12 (measures 92-101)

130 Musical staff 13 (measures 102-111)

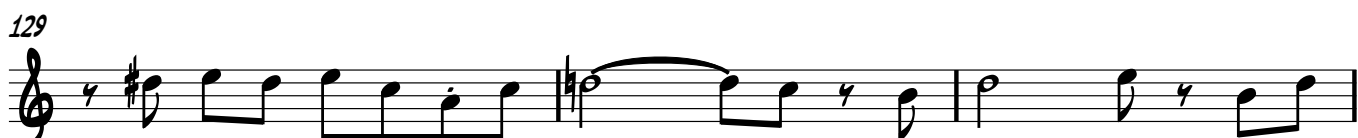
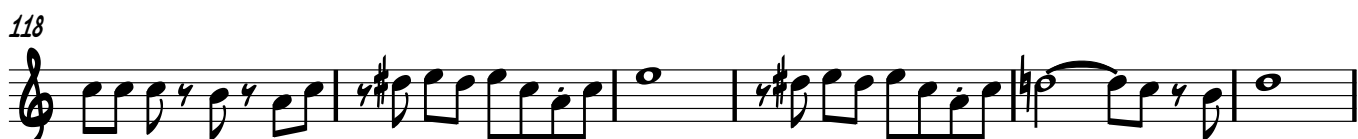
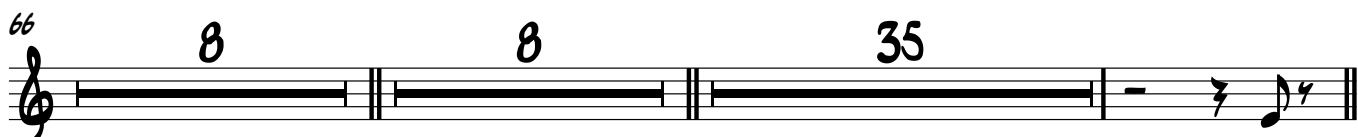
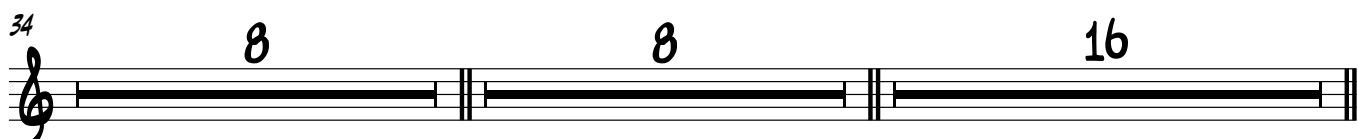
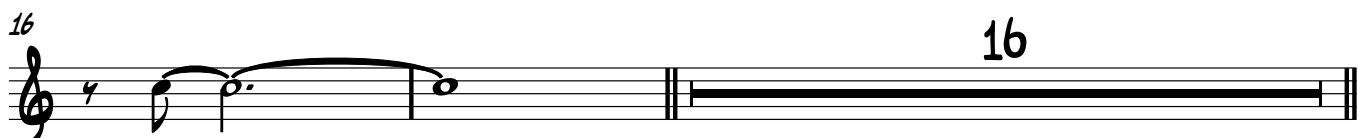
Trombón

" LINDA AMERICA "

A

CHUY LIZARRAGA

♩ = 200



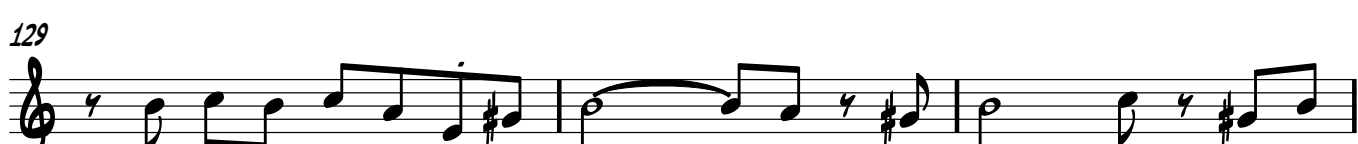
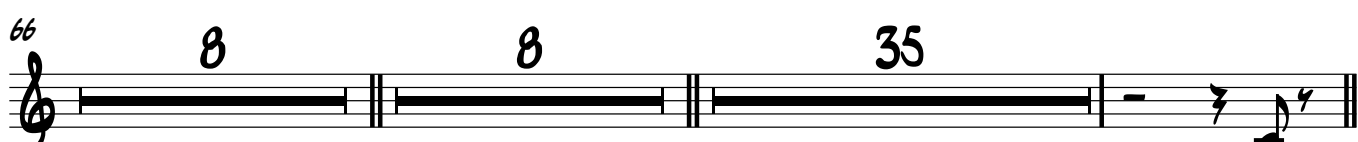
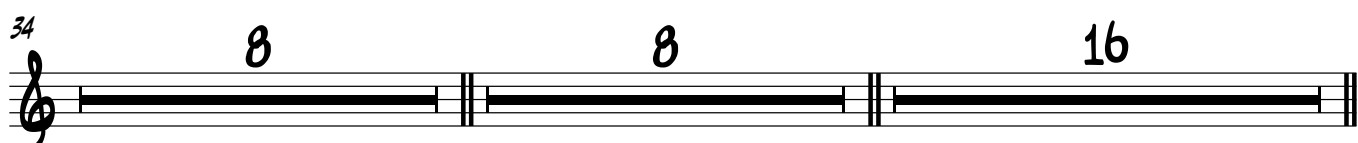
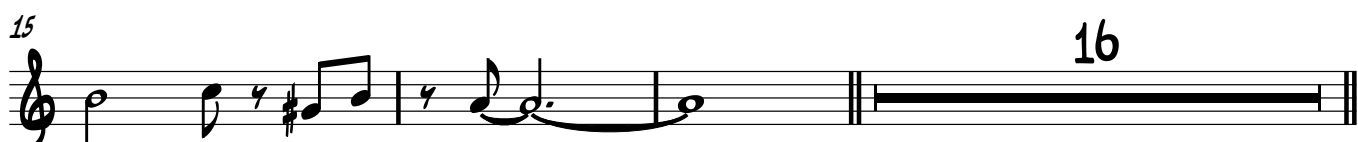
Trombón

" LINDA AMERICA "

A

CHUY LIZARRAGA

♩ = 200

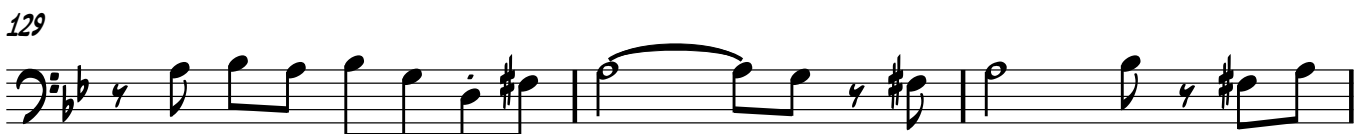
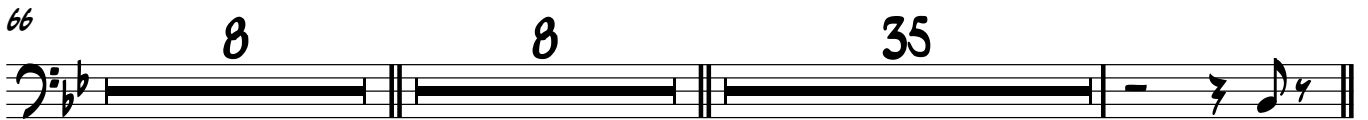
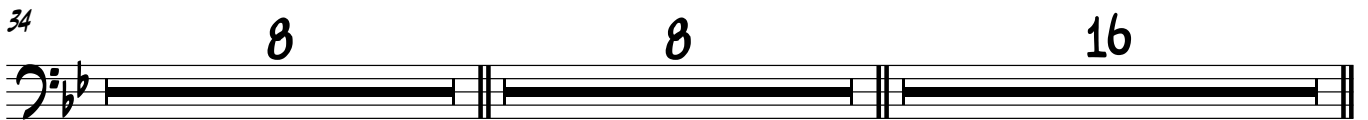
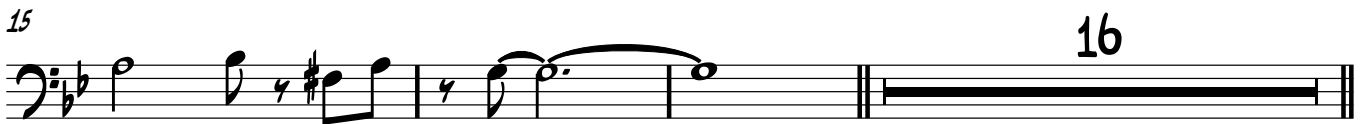


" LINDA AMERICA "

A
Trombone 3

♩ = 200

CHUY LIZARRAGA

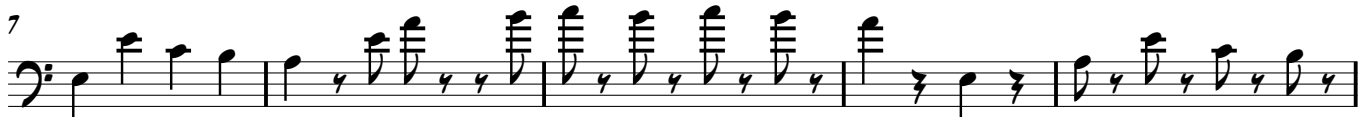


" LINDA AMERICA "

A
Tuba in Bb

♩ = 200

CHUY LIZARRAGA



66



70



74



80



86



92



98



103



108



113



118



124



130

