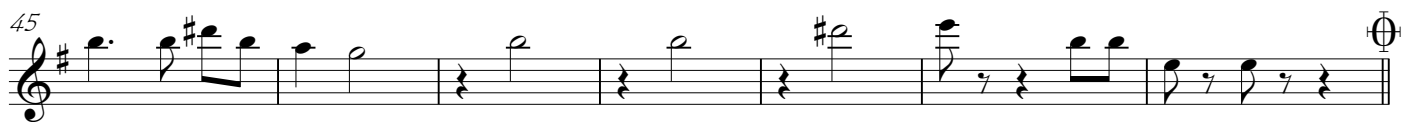
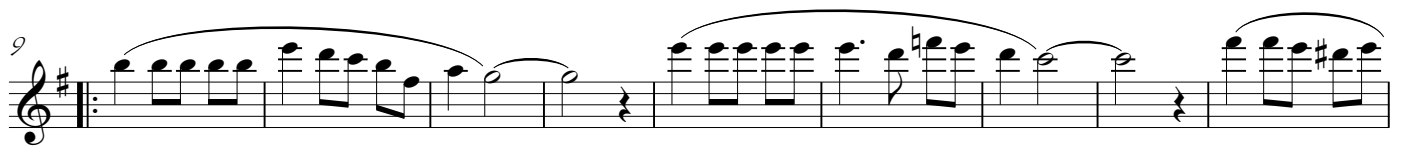


Flores Negras

Clarinete 1

Banda Mm



Flores Negras

Clarinete 2

Banda Mm



Flores Negras

Clarinete 3

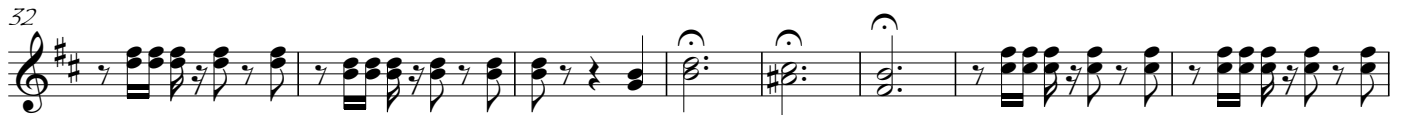
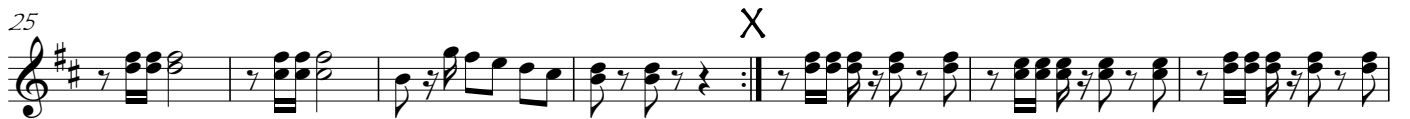
Banda Mm



Flores Negras

Saxores

Banda Mm



Trombon 1

Flores Negras

Banda Mm

First musical staff, measures 1-7. Bass clef, 3/4 time signature, key signature of one flat. The staff contains eighth and sixteenth notes with various articulations and slurs.

Second musical staff, measures 8-15. Measure 8 is marked with a '8'. The staff continues with eighth and sixteenth notes, including a repeat sign at the beginning of the line.

Third musical staff, measures 16-23. Measure 16 is marked with a '16'. The staff features eighth and sixteenth notes with slurs and ties.

Fourth musical staff, measures 24-31. Measure 24 is marked with a '24'. The staff includes eighth and sixteenth notes, a repeat sign, and a double bar line with an 'X' and a '2' above it, indicating a second ending.

Fifth musical staff, measures 32-40. Measure 32 is marked with a '32'. The staff contains eighth and sixteenth notes, with some notes marked with a fermata.

Sixth musical staff, measures 41-48. Measure 41 is marked with a '41'. The staff features eighth and sixteenth notes with slurs and ties.

Seventh musical staff, measures 49-56. Measure 49 is marked with a '49'. The staff includes eighth and sixteenth notes, a repeat sign, and a fermata.

Eighth musical staff, measures 57-64. Measure 57 is marked with a '57'. The staff contains eighth and sixteenth notes with slurs and ties.

Ninth musical staff, measures 65-71. Measure 65 is marked with a '65'. The staff features eighth and sixteenth notes with slurs and ties.

Tenth musical staff, measures 72-76. Measure 72 is marked with a '72'. The staff includes eighth and sixteenth notes, a fermata, and the text 'alaXy0' written below the staff.

Eleventh musical staff, measures 77-84. Measure 77 is marked with a '77'. The staff contains eighth and sixteenth notes with slurs and ties.

First musical staff, measures 1-7. Bass clef, 3/4 time signature, key signature of one flat. The staff contains eighth and sixteenth notes with various articulations.

8

Second musical staff, measures 8-15. Continuation of the piece with similar rhythmic patterns.

16

Third musical staff, measures 16-23. Includes a measure with a sharp sign above the staff.

24

Fourth musical staff, measures 24-31. Ends with a double bar line, a fermata, and a measure with a '2' above it. An 'X' is written above the staff in the middle.

32

Fifth musical staff, measures 32-40. Features a measure with a fermata and a sharp sign above the staff.

41

Sixth musical staff, measures 41-48. Continuation of the melodic line.

49

Seventh musical staff, measures 49-56. Includes a measure with a fermata and a sharp sign above the staff.

57

Eighth musical staff, measures 57-64. Continuation of the piece.

65

Ninth musical staff, measures 65-71. Continuation of the piece.

72

Tenth musical staff, measures 72-76. Includes the text 'alaXy' and a fermata symbol above the staff.

77

Eleventh musical staff, measures 77-84. Continuation of the piece.

Flores Negras

8

16

24

32

41

49

57

65

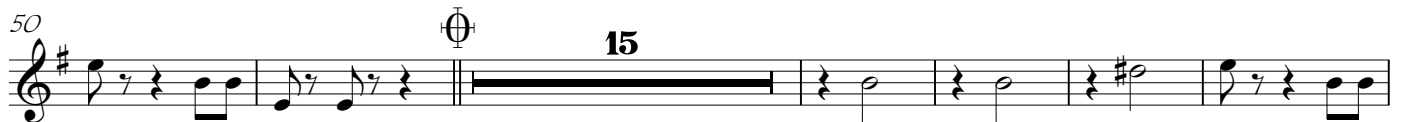
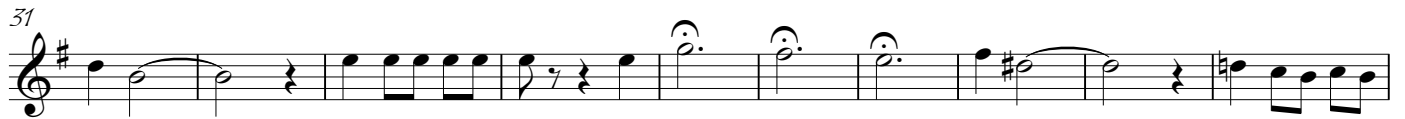
72

77

Flores Negras

Trompeta 1

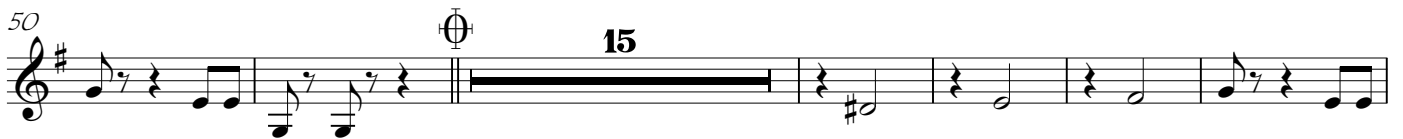
Banda Mm



Trompeta 3

Flores Negras

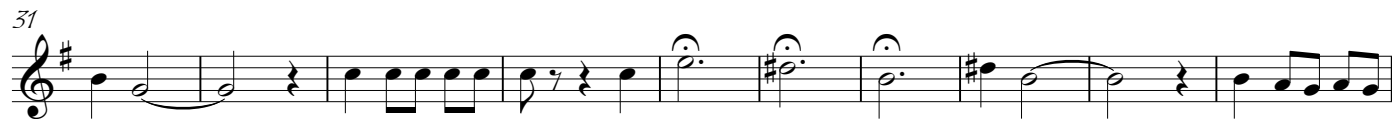
Banda Mm



Trompeta 2

Flores Negras

Banda Mm



Flores Negras

Tuba

Banda Mm

