

** Mujer Mujer **

Banda El Recodo

Ian's Music
2016

Clarinete 1

♩ = 165
4
3/4
1-4
5-20

23

6 A
32-37
28 B
42-69

70
17
71-87

92
6 To Coda
5
94-99
100-104

D.S. de A a B y al Coda

105

107

** Mujer Mujer **

Banda El Recodo

Ian's Music
2016

Clarinete 2

♩ = 165
4 16
1-4 5-20

23

6 A 28

32-37 42-69

70 B 17

71-87

92 6 To Coda 5

94-99 100-104

D.S. de A a B y al Coda

105

107

** Mujer Mujer **

Banda El Recodo

Ian's Music
2016

Clarinete 3

♩ = 165
4 16
1-4 5-20

23

6 A 28 B

32-37 42-69

70 17

71-87

92 To Coda 6 5

94-99 100-104

D.S. de A a B y al Coda

105

106

** Mujer Mujer **

Banda El Recodo

Ian's Music

2016

Trombón 1 $\text{♩} = 165$

2
1-2

5

13

21

28

36

A

9
38-46

51

10
52-61
4
66-69

70

7
74-80
3

83

12
84-95

100-102

3

D.S. de A a B y al Coda

106

** Mujer Mujer **

Ian's Music

Banda El Recodo

2016



Trombón 3 $\text{♩} = 165$

2

1-2

5

13

20

6

21-26

32

3

3

3

A

9

38-46

10

52-61

4

B

66-69

70

7

74-80

83

12

84-95

To Coda

3

100-102

D.S. de A a B y al Coda

105

106

** Mujer Mujer **

Banda El Recodo

Ian's Music

2016

♩ = 165

Trombón 1

2
1-2

5

13

21

28

36 A 9 38-46

51 10 52-61 4 B 66-69

70 7 74-80

83 12 84-95

3 100-102

D.S. de A a B y al Coda

106

** Mujer Mujer **

Ian's Music
2016

Banda El Recodo

♩ = 165



Trombón 2

3/4 2 1-2

5

13

3 21-23

30 A 3 3 3

9 38-46

10 52-61 4 B

70 7 74-80

83 12 84-95 T³ Coda

3 100-102

105



D.S. de A a B y al Coda

106

** Mujer Mujer **

Ian's Music

Banda El Recodo

2016

♩ = 165



Trombón 3

3/4 2 1-2

5

13

20

6 21-26

32

3 3 3 A

9

38-46

10

52-61 4 B

70

7 74-80

83

12 84-95 To Coda

3

100-102

105

D.S. de A a B y al Coda

106

** Mujer Mujer **

Banda El Recodo

Ian's Music

2016

Trompeta 1

♩ = 165

3/4

4

16

1-4

5-20

23

6

A

16

32-37

38-53

57

8

B

58-65

70

5

71-75

20

To Coda

5

80-99

100-104

D.S. de A a B y al Coda

105

106

** Mujer Mujer **

Ian's Music
2016

Banda El Recodo
♩ = 165

Trompeta 2

4 3/4 16

1-4 5-20

23

5 A 16

32-36 38-53

56 B 8

58-65

70 5

71-75

To Coda

20 5

80-99 100-104

D.S. de A a B y al Coda

105

107

** Mujer Mujer **

Banda El Recodo

Ian's Music
2016

Trompeta 3

$\text{♩} = 165$

4/4

1-4

5-20

23

6 A 16

32-37 38-53

57 8 B

58-65

70 5

71-75

To Coda

20 5

80-99 100-104

D.S. de A a B y al Coda

105

107

** Mujer Mujer **

Ian's Music

2016



Altos Eb

Banda El Recodo

♩ = 165

Musical score for Alto Eb, 3/4 time, tempo 165. The score consists of 15 staves of music. The first staff (measures 5-10) features a melodic line with triplets and a final triplet of eighth notes. The subsequent staves (measures 11-23) are primarily accompaniment consisting of eighth-note chords. A section marked '4' (measures 28-31) is indicated by a bracket and the letter 'A'. A section marked 'B' (measures 68-74) includes a triplet of eighth notes. The score concludes with a final staff of accompaniment (measures 80-85).

86



92

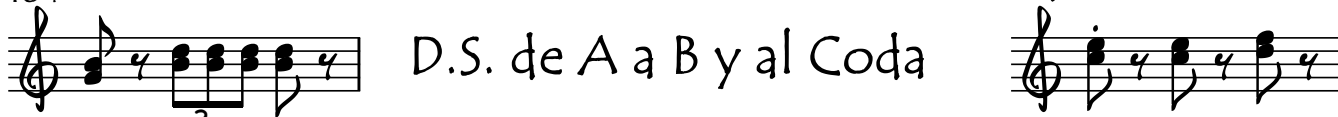


To Coda

98



104



106



** Mujer Mujer **

Ian's Music

2016



Tuba

Banda El Recodo

♩ = 165

5
12
19
25
32
38
45
51
58
64
70
77
84

A
B

2

Tuba

91



97

To Coda



103

D.S. de A a B y al Coda



106



** Mujer Mujer **

Ian's Music

2016



Tuba

Banda El Recodo

♩ = 165

Musical score for Tuba, consisting of 12 staves of music. The score is written in bass clef with a key signature of one flat (Bb) and a 3/4 time signature. The tempo is marked as ♩ = 165. The score includes various musical notations such as eighth notes, quarter notes, and rests. There are several triplet markings (3) and dynamic markings (p). Section markers A and B are present. The score ends with a double bar line.

2

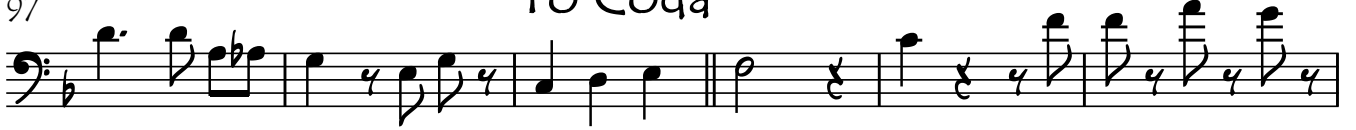
Tuba

91



97

To Coda



103

D.S. de A a B y al Coda



106

