

Ojos de madera

Clarinete 1°

Banda Bucanera

2 8

14 **FIN**

34

40

46 16 14

79 **(D.S. 2 VECES 1RA AL CODA 2DA AL FIN)**

81 **(A LA A Y D.S. POR 2DA VEZ)**

* - * Mario Robles * - *

Ojos de madera

Clarinete 2°

Banda Bucanera

2 **S** 8

14 **A**

FIN

16 14 **C**

2 **(D.S. 2 VECES 1RA AL CODA 2DA AL FIN)**

C 2 **(A LA A Y D.S. POR 2DA VEZ)**

*-*Mario Robles*-*

Ojos de madera

Clarinete 3°

Banda Bucanera

2 **S** 8

14 **A**

FIN

16 14 **C**

2 (D.S. 2 VECES 1RA AL CODA 2DA AL FIN)

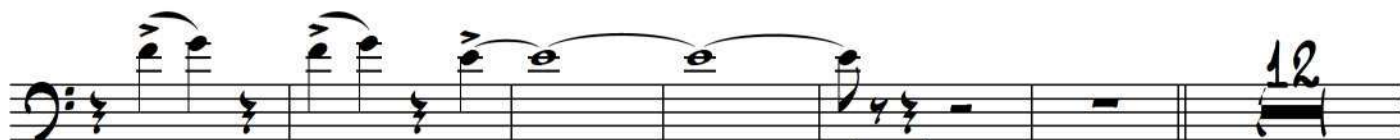
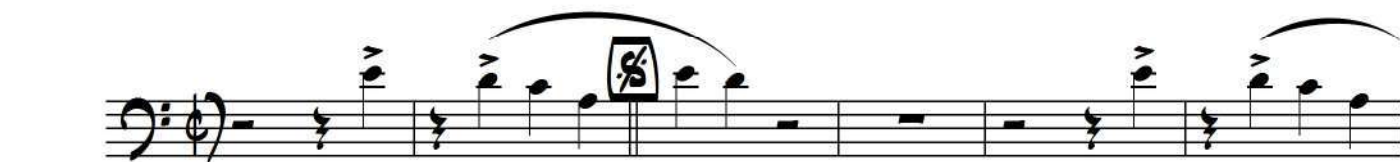
C 2 (A LA A Y D.S. POR 2DA VEZ)

*-*Mario Robles*-*

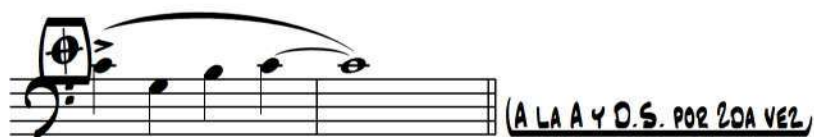
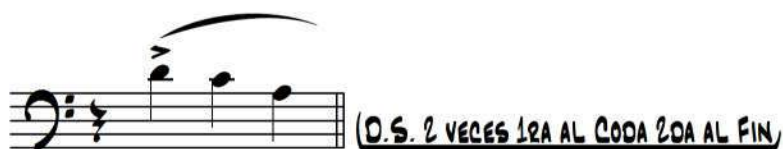
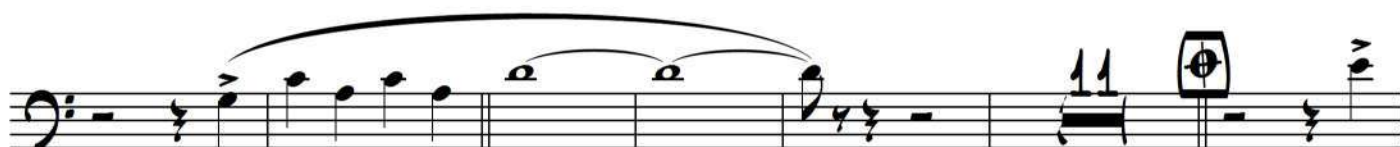
Ojos de madera

Trombón 1º

Banda Bucanera



FIN



*-*Mario Robles*-*

Ojos de madera

Trombón 2º

Banda Bucanera

7 16 14 12

FIN

A 6

(D.S. 2 VECES 1RA AL CODA 2DA AL FIN)

(A LA A Y D.S. POR 2DA VEZ)

*-*Mario Robles*-*

Ojos de madera

Trombón 3°

Banda Bucanera

5

12

FIN

A 6

7 16 14

(D.S. 2 VECES 1RA AL CODA 2DA AL FIN)

(A LA A Y D.S. POR 2DA VEZ)

*-*Mario Robles*-*

Ojos de madera

Trompeta 1ª

Banda Bucanera

2

8

14

FIN

32

A

6

5

47

63

79

2

(D.S. 2 VECES 1RA AL CODA 2DA AL FIN)

81

(A LA A Y D.S. POR 2DA VEZ)

*-*Mario Robles*-*

Tel casa: 4666655640 Cel: 4661018030 E-mail: mario_partituras@hotmail.com
 San Pedro de los Naranjos, Salvatierra, Guanajuato

Ojos de madera

Trompeta 2ª

Banda Bucanera

2

FIN

12

FIN

A

6

7

16

14

2

(D.S. 2 VECES 1RA AL CODA 2DA AL FIN)

(A LA A Y D.S. POR 2DA VEZ)

*-*Mario Robles*-*

Ojos de madera

Tuba

Banda Bucanera

The image displays a musical score for the Tuba part of the piece "Ojos de madera" by Banda Bucanera. The score is written on ten staves of music, each beginning with a bass clef and a key signature of two sharps (F# and C#). The music consists of a series of rhythmic patterns and melodic lines. A boxed "S" symbol is located above the first staff, and a boxed "FIN" symbol is located below the third staff. A boxed "A" symbol is located above the sixth staff. The score concludes with a final melodic flourish on the tenth staff.

*-*Mario Robles*-*

Tel casa: 4666655640 Cel: 4661018030 E-mail: mario_partituras@hotmail.com

San Pedro de los Naranjos, Salvatierra, Guanajuato

TUBA

OJOS DE MADERA

First line of musical notation for Tuba. It begins with a bass clef, a key signature of two sharps (F# and C#), and a common time signature. The notes are: G2, A2, Bb2, C3, D3, E3, F#3, G3, A3, B3, C4, D4, E4, F#4, G4, A4, B4, C5.

Second line of musical notation for Tuba. It begins with a bass clef, a key signature of two sharps, and a common time signature. The notes are: G2, A2, Bb2, C3, D3, E3, F#3, G3, A3, B3, C4, D4, E4, F#4, G4, A4, B4, C5.

Third line of musical notation for Tuba. It begins with a bass clef, a key signature of two sharps, and a common time signature. The notes are: G2, A2, Bb2, C3, D3, E3, F#3, G3, A3, B3, C4, D4, E4, F#4, G4, A4, B4, C5.

Fourth line of musical notation for Tuba. It begins with a bass clef, a key signature of two sharps, and a common time signature. The notes are: G2, A2, Bb2, C3, D3, E3, F#3, G3, A3, B3, C4, D4, E4, F#4, G4, A4, B4, C5. The line ends with a repeat sign. **(D.S. 2 VECES 1RA AL CODA 2DA AL FIN)**

Fifth line of musical notation for Tuba. It begins with a repeat sign, followed by a bass clef, a key signature of two sharps, and a common time signature. The notes are: G2, A2, Bb2, C3, D3, E3, F#3, G3, A3, B3, C4, D4, E4, F#4, G4, A4, B4, C5. **(A LA Y D.S. POR 2DA VEZ)**