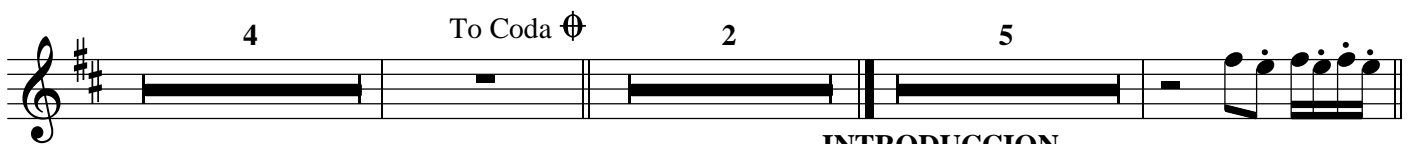
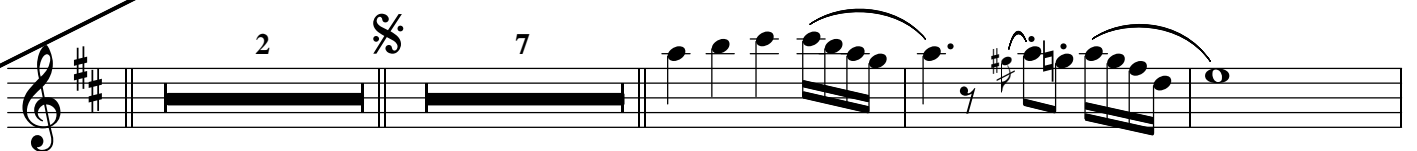
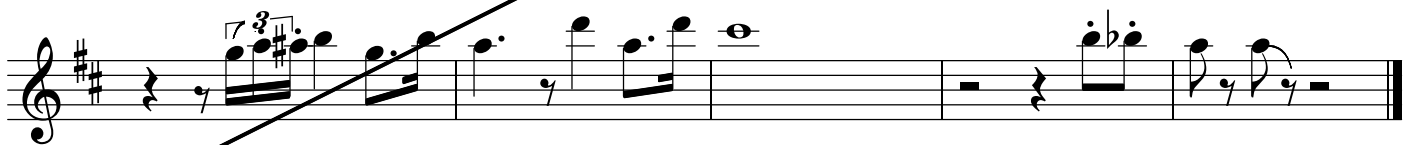
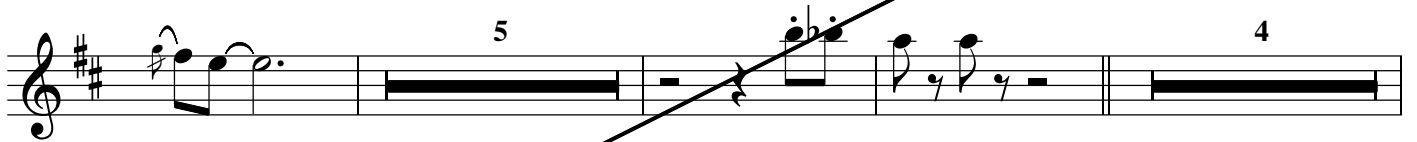
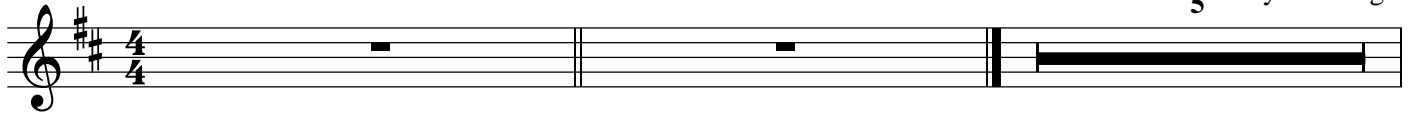


CLARINETE 1ro

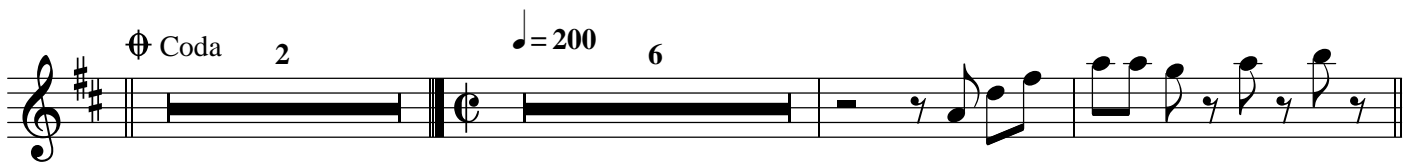
RELACION CLANDESTINA

Balada Ranchera ♩ = 93

5 Chuy Lizarraga



INTRODUCCION



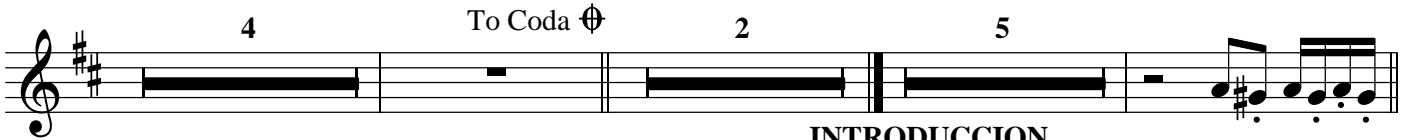
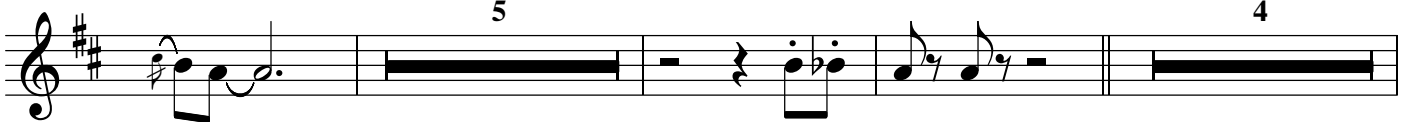
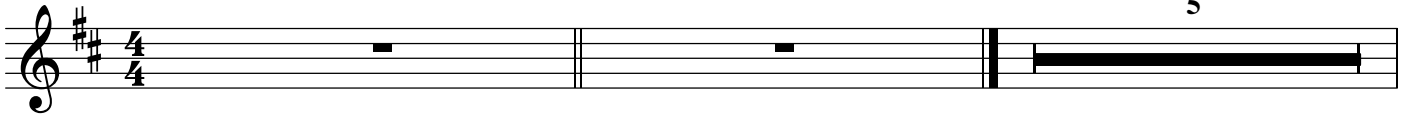
Mario Lemus C.
Churipitzeo, Penjamo Gto.
469 6924115

RELACION CLANDESTINA

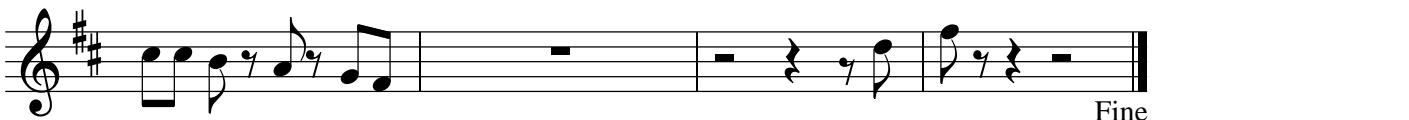
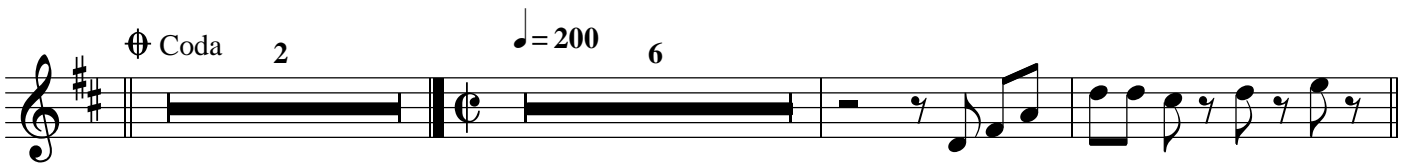
Chuy Lizarraga

Balada Ranchera ♩ = 93

5



INTRODUCCION



RELACION CLANDESTINA

Chuy Lizarraga

Balada Ranchera ♩ = 93

INTRODUCCION

Fine

TROMBON 2do

RELACION CLANDESTINA

Chuy Lizarraga

Balada Ranchera ♩ = 93

INTRODUCCION

Fine

Mario Lemus C.
Churipitzeo, Penjamo Gto.
469 6924115

TROMBON 3ro

RELACION CLANDESTINA

Chuy Lizarraga

Balada Ranchera ♩ = 93

3

TROMPETA 1ra

RELACION CLANDESTINA

Chuy Lizarraga

Balada Ranchera ♩ = 93

INTRODUCCION

VOZ

D.S. al Coda

⊕ Coda 2

♩ = 200 6

Mario Lemus C.
Churipitzeo, Penjamo Gto.
469 6924115

Fine

TROMPETA 2da

RELACION CLANDESTINA

Balada Ranchera ♩ = 93

Chuy Lizarraga

Mario Lemus C.
Churipitzeo, Penjamo Gto.
469 6924115

Fine

RELACION CLANDESTINA

Balada Ranchera ♩=93

Chuy Lizarraga

Mario Lemus C.
Churipitzeo, Penjamo Gto.
469 6924115

Fine

SAXORES Eb

RELACION CLANDESTINA

Balada Ranchera $\text{♩} = 93$

Chuy Lizarraga

The main musical score for Saxophones Eb is written in treble clef with a key signature of three sharps (F#, C#, G#) and a 4/4 time signature. It begins with two measures of whole rests, followed by a series of chords and eighth notes. The score includes several trills (tr) and a triplet (3) in the second system. A section marked with a double bar line and a 'C' symbol (Coda) begins in the sixth system. The score concludes with a triplet (3) in the eighth system.

INTRODUCCION

The introduction is a single system of six measures of chords in treble clef, key signature of three sharps, and 4/4 time.

VOZ

D.S. al Coda

The 'VOZ' section consists of two systems of six measures each, featuring chords in treble clef, key signature of three sharps, and 4/4 time.

Coda

$\text{♩} = 200$

The coda section is written in treble clef, key signature of three sharps, and 4/4 time. It begins with a triplet (3) of chords. The tempo is marked as $\text{♩} = 200$. The section concludes with a double bar line and the word 'Fine'.

Mario Lemus C.
Churipitzeo, Penjamo Gto.
469 6924115

RELACION CLANDESTINA

Balada Ranchera ♩ = 93

INTRODUCCION

⊕ Coda ♩ = 200