

Se me hizo facil

(50)

X

Clar. 3^o

Handwritten musical notation for Clarinet 3rd part, measures 1-10. The notation is on a single staff with a treble clef and a 3/4 time signature. Measure 1 starts with a sharp sign (S) and a 6-measure rest. Measures 2-10 contain various rhythmic patterns and notes. Measure 9 has a 9-measure rest, and measure 10 has a 10-measure rest.

CAPRICHIO...

al S y #

Handwritten musical notation for Clarinet 3rd part, measures 11-14. Measure 11 has a 10-measure rest, measure 12 has a 4-measure rest, measure 13 has a 4-measure rest, and measure 14 has a 4-measure rest. The word "CAPRICHIO..." is written above measure 13.

CAPRICHIO...

Handwritten musical notation for Clarinet 3rd part, measures 15-18. Measures 15-18 contain rhythmic patterns and notes, ending with a double bar line.

Jimmy Melendez Pineda

Se me hizo fácil

Supeto 72 BAND LIMÓN Ranchera

Handwritten musical notation for the first part of the piece. It features a treble clef, a key signature of one sharp (F#), and a 2/4 time signature. The notation includes a melody line with various notes, rests, and slurs, and a bass line with chords and rhythmic patterns. There are several measures with rests and some with repeated notes.

Handwritten musical notation for the second part of the piece, starting with the instruction "CAPRICHO...". It features a 7/4 time signature and continues with a melody and bass line, including a section with repeated notes and a 1/2 time signature.

Handwritten musical notation for the third part of the piece, starting with the instruction "CAPRICHO...". It features a 4/4 time signature and includes a melody and bass line with various notes and rests.

Jimmy Melgarejo Pineda

Se me hizo facil

X

Trompeta 2^a

Handwritten musical score for Trompeta 2^a. The score is written on ten staves. It begins with a treble clef and a 3/4 time signature. The first staff contains a melodic line with a dynamic marking of *p.* and a fermata. The second staff continues the melody. The third staff features a whole note chord marked with a '7'. The fourth staff has a key signature change to one sharp (F#) and includes a measure with a '4' and a measure with an '8'. The fifth staff has a measure with a '4' and a measure with a '6'. The sixth staff has a measure with a '12'. The seventh staff is marked 'CAPRICHO...' and contains a measure with a '7'. The eighth staff has a measure with a '6' and a measure with a '12'. The ninth staff is also marked 'CAPRICHO...' and contains a measure with a '4'. The tenth staff concludes the piece with a double bar line.

Jimmy Melgosa Pineda

Se me hizo facil

x

Trompeta 3^a

Jimmy Melgrodery Pineda

Se me hizo fácil

Trombon 7º

Handwritten musical score for Trombon 7º. The score consists of seven staves of music. The first staff begins with a treble clef, a key signature of one flat (Bb), and a 3/4 time signature. It contains a series of notes and rests, with a large 'S' and '15' written above. The second staff continues the melody with notes and rests. The third staff features a key signature change to one sharp (F#) and includes a '4' and '15' above. The fourth staff has a '4' and '10' above. The fifth staff includes the instruction 'capriccio...' and an '8' above. The sixth staff has a '10' and '8' above. The seventh staff includes 'capriccio...' and a '4' above. The final staff shows some notes and rests with '4' and '8' above.

Jimmy Melguedez Pineda

Se me hizo fácil

Trombón 2º

Handwritten musical score for Trombone 2nd part, measures 1-10. The score is written on a grand staff with a bass clef and a 3/4 time signature. It includes various musical notations such as rests, notes, and dynamic markings like 'p.'. Measure 1 has a whole rest with a '15' above it. Measure 2 has a whole rest with a '4' above it. Measure 3 has a whole rest with a '10' above it. Measure 4 has a whole rest with an '8' above it. Measure 5 has a whole rest with an '8' above it. Measure 6 has a whole rest with an '8' above it. Measure 7 has a whole rest with an '8' above it. Measure 8 has a whole rest with an '8' above it. Measure 9 has a whole rest with an '8' above it. Measure 10 has a whole rest with an '8' above it.

Handwritten musical score for Trombone 2nd part, measures 11-15. The score is written on a grand staff with a bass clef and a 3/4 time signature. It includes various musical notations such as rests, notes, and dynamic markings like 'p.'. Measure 11 has a whole rest with a '10' above it. Measure 12 has a whole rest with an '8' above it. Measure 13 has a whole rest with an '8' above it. Measure 14 has a whole rest with an '8' above it. Measure 15 has a whole rest with an '8' above it.

Junay Molgoredez Pineda

Se me hizo fácil

Trombón 3^o

Handwritten musical score for Trombone 3^o. The score is written on ten staves. The first staff begins with a treble clef, a key signature of one sharp (F#), and a 3/4 time signature. The music consists of a series of notes and rests, with various markings above the staff including 'S.', 'L5', 'L4', 'L5', '4', 'L0', '8', 'CAPRICHOSO...', and '4'. The score includes dynamic markings such as 'p.' and 'f.'. The piece concludes with a double bar line and a wavy line indicating the end of the music.

Jimmy Melgarejo Pineda

Se me hizo facil

Tuba Bb

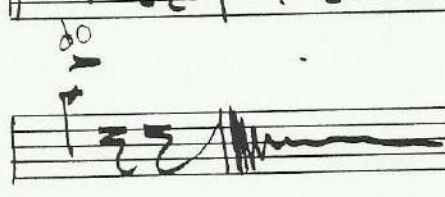
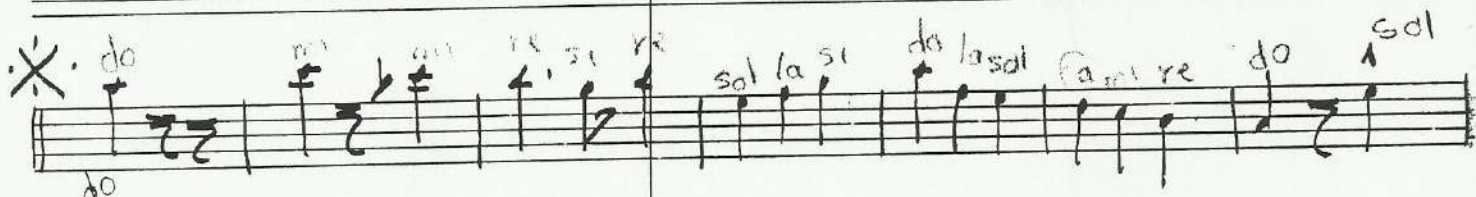
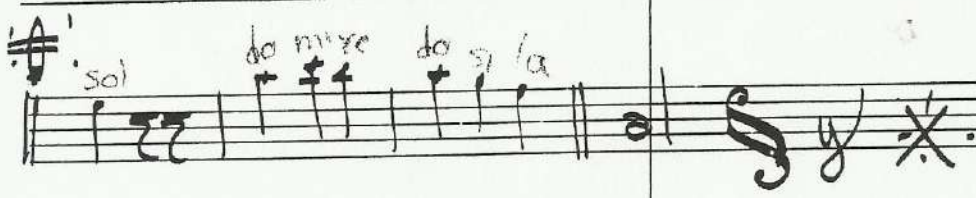
Handwritten musical score for Tuba Bb. The score consists of 12 staves of music, each with a vocal line (soprano, alto, tenor, bass) and a tuba line. The music is written in a key with one flat (Bb) and a 2/4 time signature. The lyrics are written above the vocal lines, and the tuba part is written in bass clef with notes and rests. The score includes various musical notations such as clefs, notes, rests, and dynamic markings.

Lyrics (from top to bottom):

do mi fa sol si re sol si re sol la si do do do do mi sol
do mi re do do mi re do si la sol re re re sol la si do
do mi sol do la sol fa mi re do do do mi sol fa mi re do
re mi fa re do si la do fa la sol fa mi re do do do mi do si la
sol re sol si do do mi sol do si la sol fa re do
mi sol do do do mi sol do si la sol sol sol si re sol mi re do do si la
sol si re sol re re re sol la si do sol sol sol sol si
do la sol fa mi re do la la sol do do re mi fa fa fa la do la do mi
fa la sol fa mi re do do do mi sol do si la sol la si do do do do mi sol
do mi re do do si re sol re re sol re re re sol la si
do sol do mi re do si la sol si re sol la si

Se me hizo facil

x



Jimmy Melendez Pineda