

Clarinet in B $\flat$  1

Cumbia

# "Cachita"

Banda Odisea  
Agosto 2007

$\text{♩} = 152$   
2

8

14

19

Gliss

24

32

40

47

8

2

61

Fin

D.S. al Coda

63

Ritmo

8

8



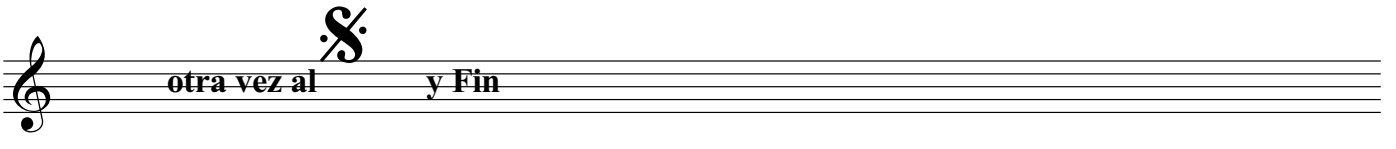



79

2



A musical staff in treble clef containing a sequence of notes and rests. The first measure is a whole rest. The second measure contains a quarter note, a quarter rest, and a quarter note. The third measure contains a quarter rest, a quarter note, and a quarter note. The fourth measure contains a quarter note, a quarter note, a quarter note, and a quarter note. The fifth measure contains a quarter note, a quarter rest, and a quarter note. The sixth measure contains a quarter rest and a quarter note. The staff ends with a double bar line.



otra vez al  y Fin

A musical staff in treble clef with the text "otra vez al" followed by a fermata symbol and "y Fin". The staff is otherwise empty.

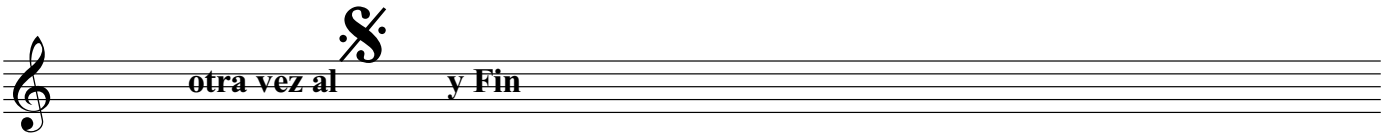


79

2



A musical staff in treble clef containing six measures. The first measure is a whole rest. The second measure contains a quarter note followed by two eighth notes. The third measure contains a quarter rest followed by a dotted quarter note. The fourth measure contains a quarter note, a dotted quarter note, and a quarter note. The fifth measure contains a quarter note, a quarter rest, and a quarter note. The sixth measure is a whole rest.



otra vez al **S** y Fin

A musical staff in treble clef with the text "otra vez al" followed by a fermata symbol and "y Fin".

# "Cachita"

♩ = 152  
2

*f*

8

15

Gliss

23

30

37

*p*

45

*f*

51

56

2

Fin

63

D.S. al Coda

63

Ritmo 8

8

2

*f*

83

otra vez al y Fin



81

A musical staff in treble clef with a key signature of one flat. The music begins with a dynamic marking of *f*. The notation includes quarter notes, eighth notes, and rests, ending with a double bar line.

A musical staff in treble clef with a key signature of one flat. The lyrics "otra vez al" and "y Fin" are written below the staff. A large section symbol (§) is positioned above the staff between the two phrases.



81

A musical staff in treble clef with a key signature of one flat (B♭). The music begins with a dynamic marking of *f* (forte). The notation includes quarter notes, eighth notes, and rests. The staff concludes with a double bar line.

A musical staff in treble clef. The text "otra vez al" is written below the staff, followed by a repeat sign (a stylized 'S' with a diagonal slash), and then "y Fin".

# "Cachita"

♩ = 152  
2

8

*ff*

15

22

30

9

*p*

45

*ff*

51

56

2

Fin

63

D.S. al Coda

63

Ritmo 8

8

2

*ff*

83

otra vez al y Fin

# "Cachita"

$\text{♩} = 152$   
2

*ff*

8

15

22

30

9

*p*

45

*ff*

51

56

2

Fin

63

D.S. al Coda

63

Ritmo 8 8 2

otra vez al y Fin *ff*

83

# "Cachita"

$\text{♩} = 152$   
2



8 *ff*



14



19



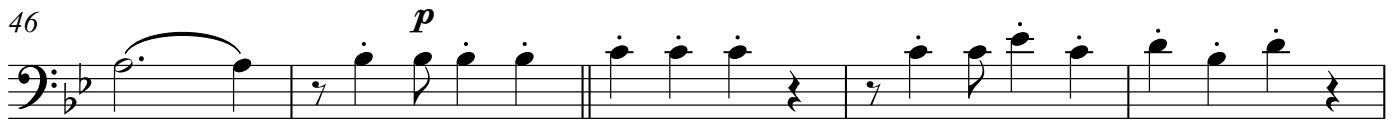
24



31 **9**



46 *p*



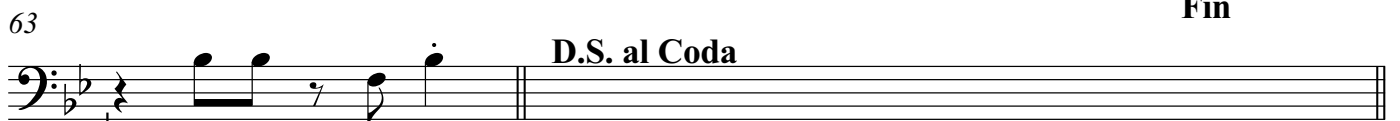
51 *ff*



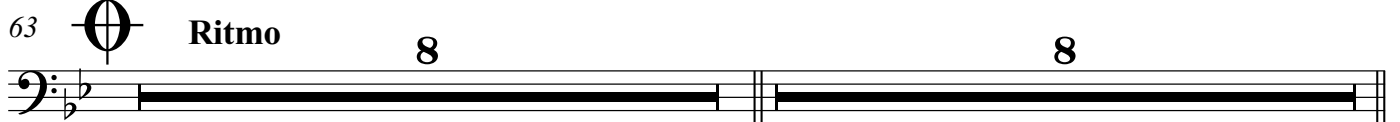
56 **2**



63 **Fin**



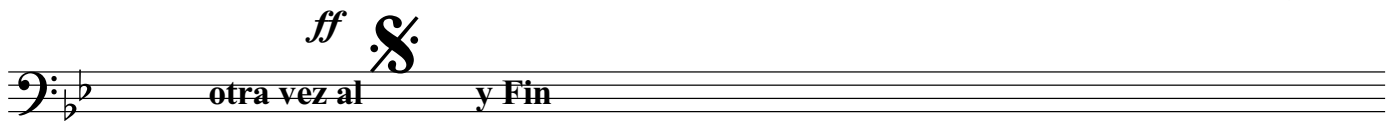
63 **Ritmo** **8** **8**



79 **2**



*ff* **otra vez al y Fin**



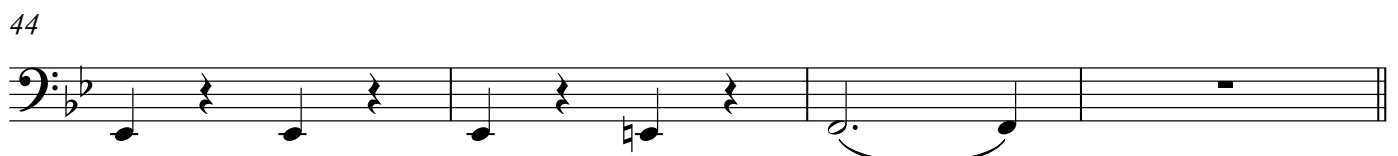
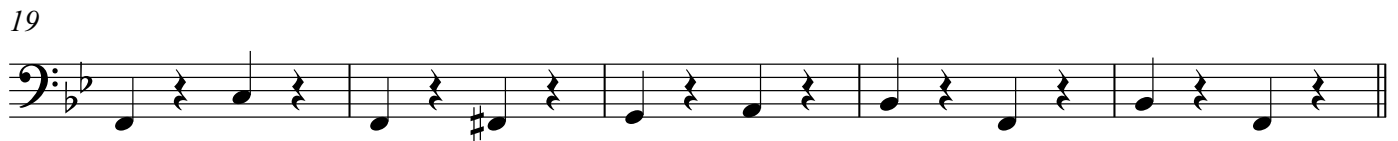
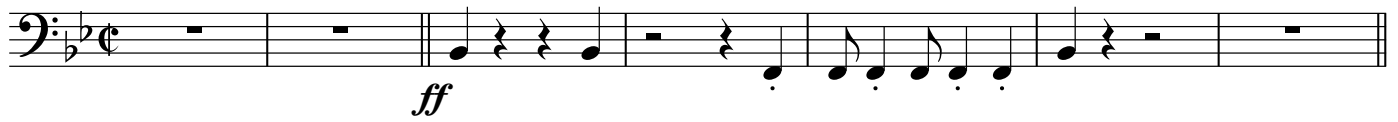
Tuba  
Cumbia

# "Cachita"

Banda Odisea  
Agosto 2007



$\text{♩} = 152$



2

Tuba

48



54



59

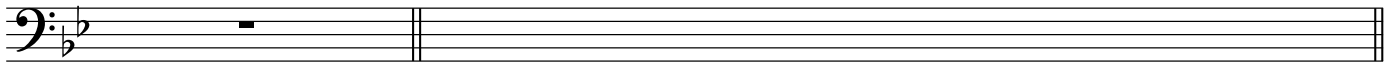
Fin



63



D.S. al Coda



63



Ritmo

8

8



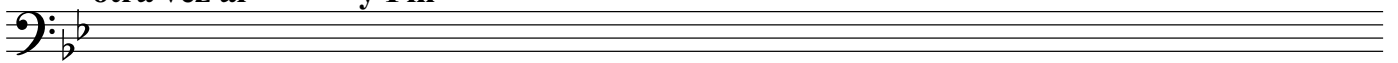
79

2



otra vez al

y Fin



Drums

Cumbia

# "Cachita"

Banda Odisea  
Agosto 2007

♩ = 152

The image displays a drum score for the piece "Cachita". It consists of 14 staves, each representing a different drum part. The notation is a form of shorthand where vertical lines with flags represent notes, and various symbols like 'x', '+', and 'v' indicate specific drum sounds or techniques. The score is organized into measures, with bar lines clearly visible. The tempo is marked as 152 beats per minute. A large 'S' symbol is placed in the second measure of the first staff. The piece is in 2/4 time, as indicated by the 'C' time signature.

Drums

58

52

56

60

Fin

63

D.S. al Coda

63

Ritmo

67

71

79

§

otra vez al y Fin

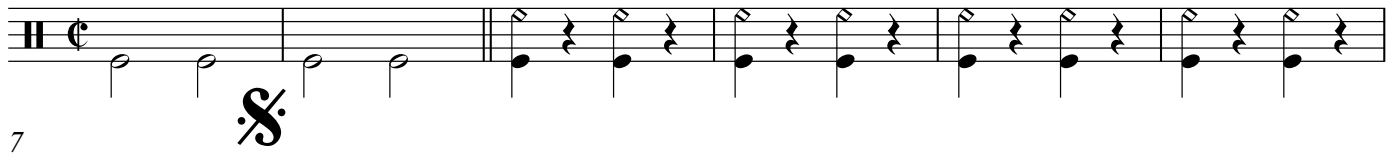
Drums

Cumbia

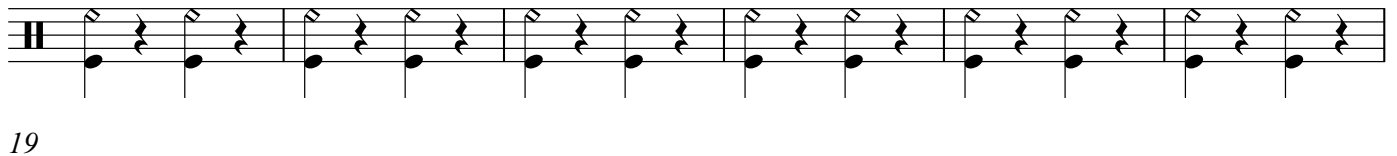
# "Cachita"

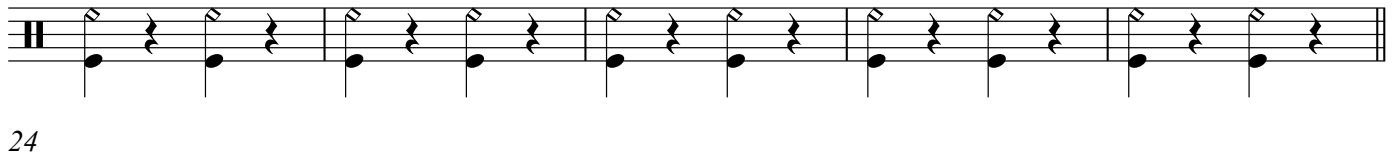
Banda Odisea  
Agosto 2007

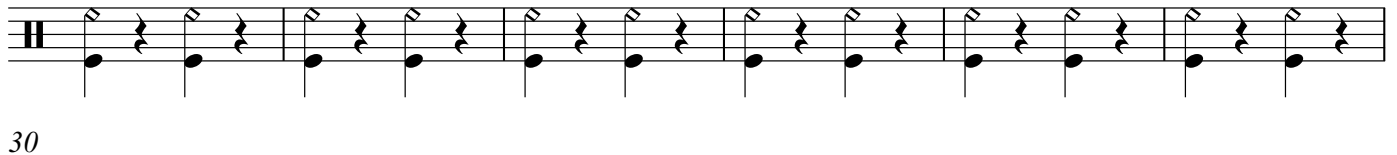
$\text{♩} = 152$

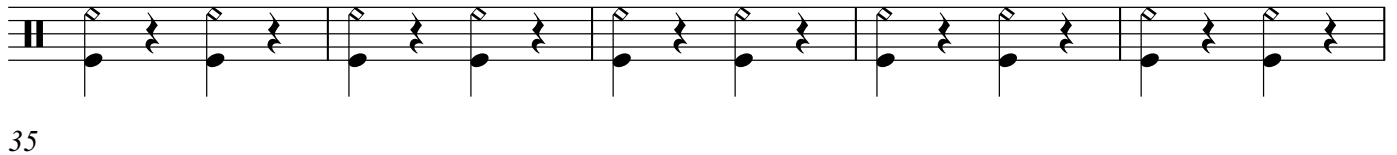
7  Musical notation for measures 7-12. Measure 7 starts with a common time signature (C) and a treble clef. The first two measures contain quarter notes. A section symbol (S) is placed between measures 6 and 7. Measures 8-12 feature a rhythmic pattern of eighth notes with accents.

13  Musical notation for measures 13-18, continuing the rhythmic pattern of eighth notes with accents.

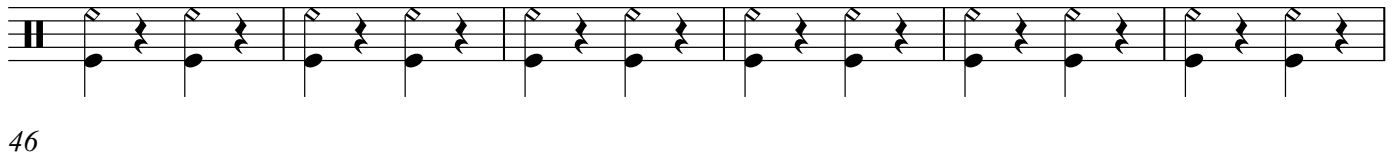
19  Musical notation for measures 19-24, continuing the rhythmic pattern of eighth notes with accents.

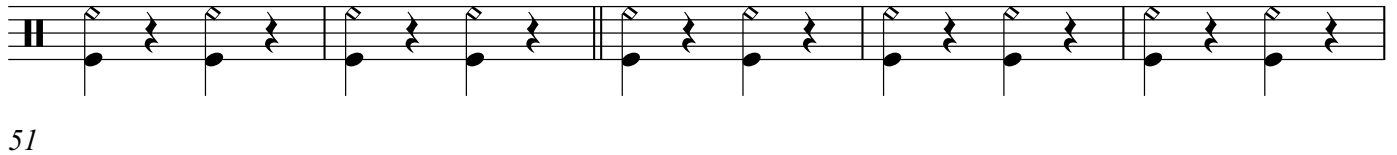
24  Musical notation for measures 25-30, continuing the rhythmic pattern of eighth notes with accents.

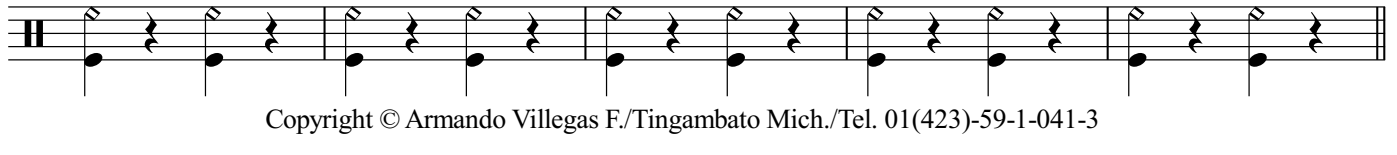
30  Musical notation for measures 31-36, continuing the rhythmic pattern of eighth notes with accents.

35  Musical notation for measures 37-42, continuing the rhythmic pattern of eighth notes with accents.

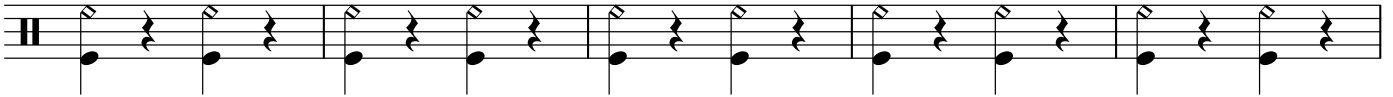
40  Musical notation for measures 43-48, continuing the rhythmic pattern of eighth notes with accents.

46  Musical notation for measures 49-54, continuing the rhythmic pattern of eighth notes with accents.

51  Musical notation for measures 55-60, continuing the rhythmic pattern of eighth notes with accents.

 Musical notation for measures 61-66, continuing the rhythmic pattern of eighth notes with accents.

56



61

Fin



D.S. al Coda



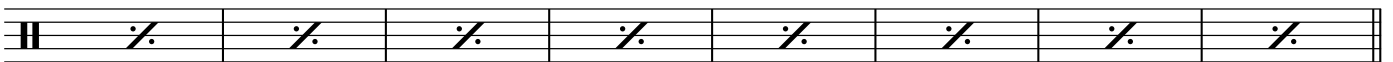
Ritmo



66



71



79



otra vez al  y Fin

