

CLAR  $\frac{1}{2}$

"SIGUE"

m.s.

Handwritten musical score for Clarinet, first system. It consists of five staves. The first staff is a treble clef with a key signature of one flat and a 3/4 time signature. The music features a melodic line with slurs and accents, and a bass line with a '2' marking. The system ends with a double bar line and a common time signature.

MARTIN\_CAMPA\_CAMARGO@HOTMAIL.COM

BRAVO #201 RINCON DE TAMAYO GTO.

TEL.4616620390 CEL.4611348422

Handwritten musical score for Clarinet, second system. It consists of five staves. The first staff is a treble clef with a key signature of one flat. The music continues with slurs and accents. The second staff has a '5' marking. The third staff has a '3' marking and a double bar line. The fourth staff has a '2' marking and a double bar line. The system ends with a double bar line and a common time signature.

A blank musical staff with five lines.

CLAR. 2º

"SIGUE"

m.s.

The first system of handwritten musical notation for the Clarinet 2 part of 'SIGUE'. It begins with a treble clef, a key signature of one flat (Bb), and a 3/4 time signature. The music consists of four staves. The first staff contains the main melodic line with various ornaments and slurs. The second and third staves appear to be accompaniment or a second melodic line, with the third staff starting with a '2' indicating a second ending. The fourth staff continues the melodic line and ends with a double bar line and a repeat sign.

MARTIN\_CAMPA\_CAMARGO@HOTMAIL.COM

BRAVO #201 RINCON DE TAMAYO GTO.

TEL.4616620390 CEL.4611348422

The second system of handwritten musical notation for the Clarinet 2 part of 'SIGUE'. It consists of four staves. The first staff continues the melodic line with slurs and ornaments. The second staff has a '5' written above it, possibly indicating a measure or a specific technique. The third staff contains rhythmic markings, including a '3' and a '2', and some symbols that look like stylized 'S' or 'B'. The fourth staff continues the melodic line with slurs and ornaments, ending with a double bar line and a repeat sign.

CLAR. 3<sup>o</sup>

"SIGUE"

m.s.

Handwritten musical score for Clarinet 3rd part, titled "SIGUE". The score consists of four staves. The first staff shows a treble clef, a key signature of one sharp (F#), and a 3/4 time signature. The music features various note values, rests, and dynamic markings. The second and third staves continue the melodic and harmonic development. The fourth staff concludes the piece with a double bar line and a repeat sign.

MARTIN\_CAMPA\_CAMARGO@HOTMAIL.COM

BRAVO #201 RINCON DE TAMAYO GTO.

TEL.4616620390 CEL.4611348422

Handwritten musical score for Clarinet 3rd part, continuing from the previous page. It consists of four staves. The first staff begins with a treble clef and a key signature of one sharp (F#). The music continues with various note values and rests. The second and third staves show more complex rhythmic patterns and dynamics. The fourth staff concludes with a double bar line and a repeat sign.

A blank musical staff with a treble clef and a key signature of one sharp (F#).

Tromp. 12

"SIGUE"

m.s.

Handwritten musical notation for Trombone 12, measures 1-6. The music is in 3/4 time with a key signature of one flat. It features a melodic line with eighth and sixteenth notes, and a bass line with eighth notes and rests. Measure numbers 1 through 6 are written below the staff.

MARTIN\_CAMPA\_CAMARGO@HOTMAIL.COM

BRAVO #201 RINCON DE TAMAYO GTO.

TEL.4616620390 CEL.4611348422

Handwritten musical notation for Trombone 12, measures 7-12. The music continues with similar rhythmic patterns. Measure numbers 7 through 12 are written below the staff. There are some corrections or changes in notation, including a double bar line and a sharp sign.

Tromp. 2<sup>a</sup>

"SIGUE"

m.s.

Handwritten musical notation for Trompe 2a, measures 1-6. The notation is on a grand staff with a 3/4 time signature and a key signature of one flat. It features eighth and sixteenth notes with accents and slurs. Measure numbers 1, 2, 3, 4, 5, and 6 are written below the staves.

MARTIN\_CAMPA\_CAMARGO@HOTMAIL.COM  
BRAVO #201 RINCON DE TAMAYO GTO.  
TEL.4616620390 CEL.4611348422

Handwritten musical notation for Trompe 2a, measures 7-12. The notation continues on a grand staff, including a double bar line and a key signature change to one sharp. Measure numbers 7, 8, 9, 10, 11, and 12 are written below the staves.

Tromp 3<sup>2</sup>

"SIGUE"

m.s.

The first system of handwritten musical notation consists of four staves. The first staff is a treble clef with a key signature of two flats (Bb and Eb) and a 3/4 time signature. It begins with a common time signature (C) and contains a melodic line with various rhythmic values and accents. The second and third staves continue the melodic line with similar notation. The fourth staff contains a bass line with rhythmic values and some rests.

MARTIN\_CAMPA\_CAMARGO@HOTMAIL.COM  
BRAVO #201 RINCON DE TAMAYO GTO.  
TEL.4616620390 CEL.4611348422

The second system of handwritten musical notation consists of five staves. The first staff continues the melodic line with rhythmic values and accents. The second staff continues the melodic line. The third staff contains a bass line with rhythmic values and some rests. The fourth staff continues the melodic line. The fifth staff contains a bass line with rhythmic values and some rests.

Tromba 1<sup>o</sup>

"SIGUE"

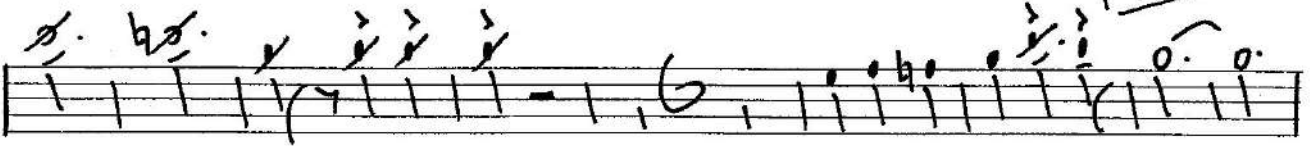
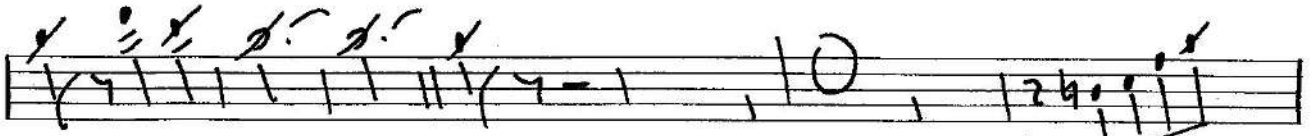
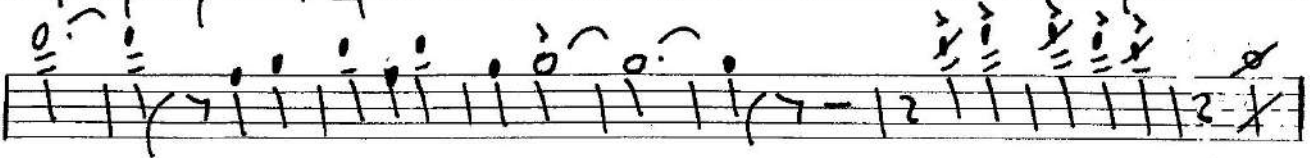
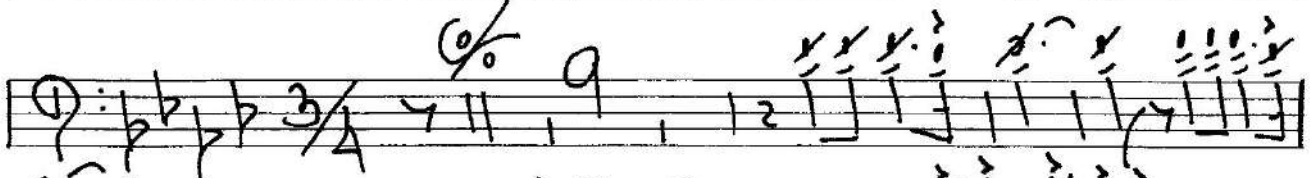
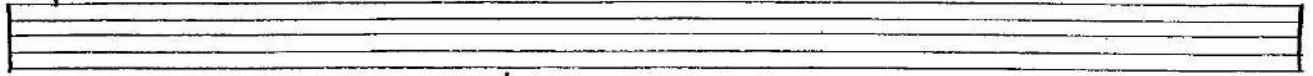
m.s.

MARTIN\_CAMPA\_CAMARGO@HOTMAIL.COM  
BRAVO #201 RINCON DE TAMAYO GTO.  
TEL.4616620390 CEL.4611348422

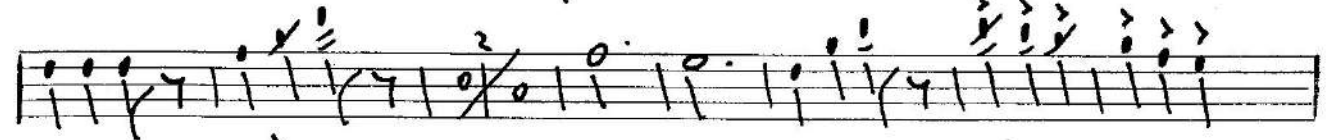
Trompa 2<sup>a</sup>

"SIGUE"

m.s.



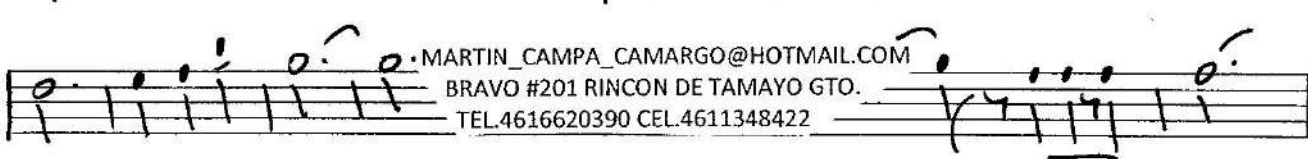
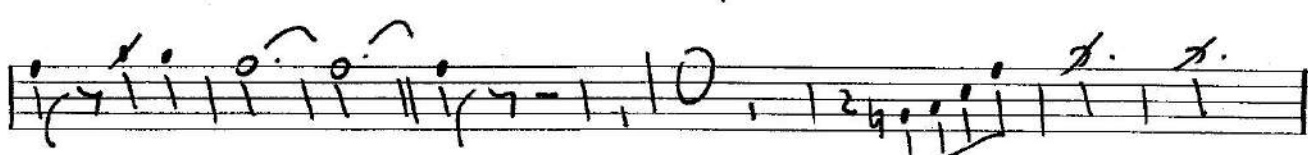
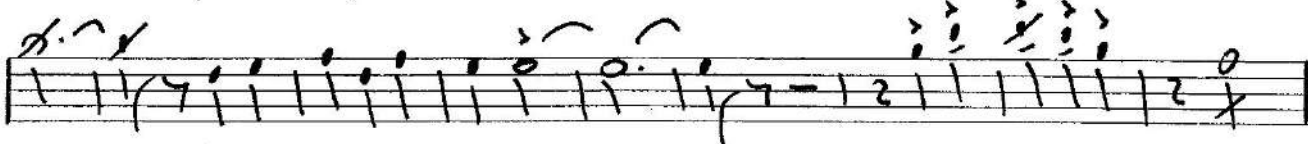
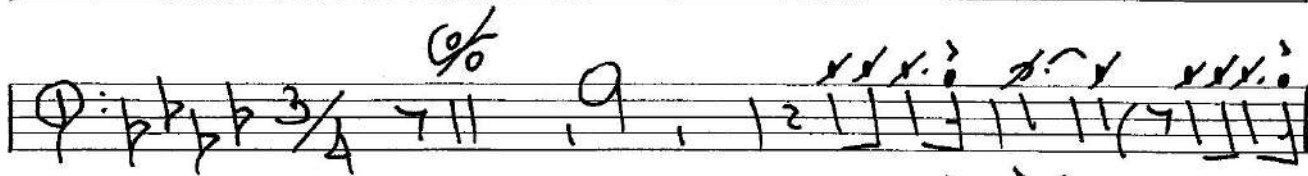
MARTIN\_CAMPA\_CAMARGO@HOTMAIL.COM  
BRAVO #201 RINCON DE TAMAYO GTO.  
TEL.4616620390 CEL.4611348422



Tromb. 3<sup>o</sup>

"SIGUE"

m.s.



MARTIN\_CAMPA\_CAMARGO@HOTMAIL.COM  
BRAVO #201 RINCON DE TAMAYO GTO.  
TEL.4616620390 CEL.4611348422



Alto

"SIGUE"

m.s.

Handwritten musical score for Alto in 3/4 time, titled "SIGUE". The score consists of 11 staves. The notation includes various chords, rests, and dynamic markings such as accents (>) and slurs. The first staff begins with a treble clef, a key signature of one flat (B-flat), and a 3/4 time signature. The music is characterized by frequent rests and chords, with some notes marked with accents. The score concludes with a double bar line and a fermata on the final note of the eleventh staff.

"SIGUE"

m.s.

TUBA

A handwritten musical score for Tuba, titled "SIGUE". The score is written on ten staves. The first staff begins with a treble clef, a key signature of one sharp (F#), and a 3/4 time signature. The music consists of a series of rhythmic patterns and notes, with various markings such as accents, slurs, and dynamic markings. A circled number "1" is present in the first staff. The score concludes with a double bar line and a repeat sign.