

=CALIDAD=

=grupo firme=



Clarinete 2 en Sib

♩=135

15

23

44

52

77

To Coda

99

D.S. al Coda

104

Copyright © Partituras Marcos Lopez Ambrosio
W/ 5554775498

clideo.com

=CALIDAD=

=grupo firme=



Clarinete 3 en Sib

♩=135

15

23

44

52

77

To Coda

99

D.S. al Coda

104

Copyright © Partituras Marcos Lopez Ambrosio
W/ 5554775498

clideo.com

=CALIDAD=

=grupo firme=



Trompeta 1 en Sib

♩=135

9

15

12

33

12

51

4

7

67

10

84

To Coda

11

99

D.S. al Coda

3 3

104

Copyright © Partituras Marcos Lopez Ambrosio
W/ 5554775498

clideo.com

Trompeta 2 en Sib

=CALIDAD= =grupo firme=



♩=135

9

15

12

33

12

51

4

7

67

10

84

To Coda

11

99

D.S. al Coda

3

3

104

Copyright © Partituras Marcos Lopez Ambrosio
W/ 5554775498

clideo.com

=CALIDAD= =grupo firme=



Trompeta 3 en Sib

♩=135

9

15

12

33

12

51

67

10

84

To Coda

11

99

D.S. al Coda

104

Copyright © Partituras Marcos Lopez Ambrosio
W/ 5554775498

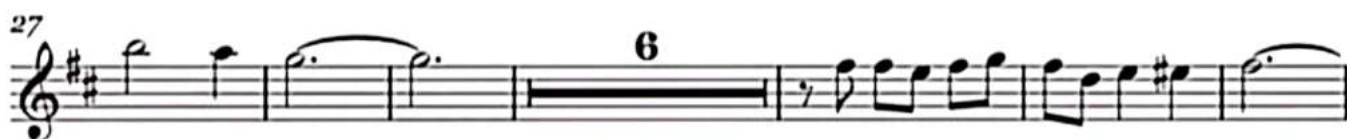
clideo.com

Trombón 1 en Sib

=CALIDAD=
=grupo firme=



♩=135



Copyright © Partituras Marcos Lopez Ambrosio
W/ 5554775498

clideo.com

Trombón 2 en Sib

=CALIDAD=

=grupo firme=



♩ = 135

Musical staff 1 (measures 1-7) with triplets.

Musical staff 2 (measures 8-13) with triplets.

Musical staff 3 (measures 14-19) with a 6-measure rest.

Musical staff 4 (measures 20-25) with a 6-measure rest.

Musical staff 5 (measures 26-37) with an 8-measure rest.

Musical staff 6 (measures 38-51) with an 8-measure rest.

Musical staff 7 (measures 52-63) with a 7-measure rest and a 11-measure rest. **To Coda**

Musical staff 8 (measures 64-92) with triplets.

Musical staff 9 (measures 93-98) with triplets.

Musical staff 10 (measures 99-103) with triplets. **D.S. al Coda**

Musical staff 11 (measures 104-108)

Copyright © Partituras Marcos Lopez Ambrosio

W/ 5554775498

clideo.com

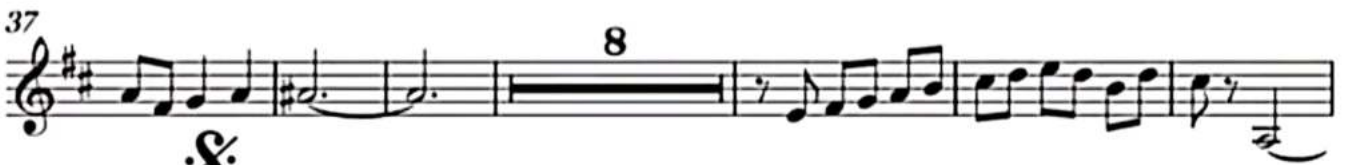
=CALIDAD=

=grupo firme=



Trombón 3 en Si \flat

$\text{♩} = 135$



Copyright © Partituras Marcos Lopez Ambrosio
W/ 5554775498

clideo.com

saxor en Mib

=CALIDAD= =grupo firme=



♩=135

9

17

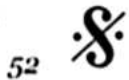
25

33

41

46

saxor en Mi \flat



52

60

68

76

84 **To Coda**

92

98 **D.S. al Coda**

104

Copyright © Partituras Marcos Lopez Ambrosio
W/ 5554775498

Bajo en Sib

=CALIDAD=

=grupo firme=



$\text{♩} = 135$



=CALIDAD=

=grupo firme=



Tuba en Sib

♩=135



2



Tuba en Si^b

52

59

66

73

79

To Coda

86

93

99

D.S. al Coda



104