

Voice
Instrumental

"Suave Y Tierno"

Kent Gibson/David Howhann/

Moderato ♩ = 116

TACET

Banda Odisea



Clarinet in Bb 1
Instrumental

"Suave Y Tierno"

Kent Gibson/David Howharn/
Banda Odissea

Moderato $\text{♩} = 116$

7

13 *f*

26 *f*

32

40

46 1. 2.

50 2

58 *ff*

66

74 *mf* 8 4 8

94

99 *f* *D.S. al Coda*

105 8 *ff*

118 *Fine*

Clarinet in B \flat 2
Instrumental

"Suave Y Tierno"

Kent Gibson/David Howhann/
Banda Odissea

Moderato $\text{♩} = 116$

13 *f*

26 *f*

32

40

46 1. 2.

50 2

58 *ff*

66

74 *mf* 8 4 8

94

99 *f*

102 *D.S. al Coda* 8

113

118 *ff* *Fine*

Clarinet in B \flat 3
Instrumental

"Suave Y Tierno"

Kent Gibson/David Howhann/
Banda Odisea

Moderato $\text{♩} = 116$

7
12 *f*
25 *f*
31 *S*
38
44
50
58 *ff*
66
74 *mf*
8 4 8
94
99 *f*
102 *D.S. al Coda* 8
113
118 *ff* *Fine*

Trumpet in Bb 1
Instrumental

"Suave Y Tierno" Kent Gibson/David Howharn/
Banda Odissea

Moderato $\text{♩} = 116$

7 8 *f*

20 8 *f*

33

39 6 1. 2. 2. *ff*

50

57 Coda

66 *f*

73

79 4

86 8 7

102 *D.S. al Coda* Coda *f*

110 *ff*

117 *Fine*

Trumpet in Bb 2
Instrumental

"Suave Y Tierno" Kent Gibson/David Howharn/
Banda Odisea

Moderato $\text{♩} = 116$

7 8 *f*

20 8 Coda

33

39 6 1. 2 2. *ff*

50

57 Coda

66 *f*

73

79 4

86 8 7

102 *D.S. al Coda* Coda *f*

110 *ff*

117 *Fine*

Trumpet in Bb 3
Instrumental

"Suave Y Tierno" Kent Gibson/David Howhann/
Banda Odisea

Moderato $\text{♩} = 116$

7 8 *f* 8 *ff* 6 2 2 *ff* 4 8 7 *f* *ff* *Fine*

"Suave Y Tierno"

Trombone 1°
Instrumental

Kent Gibson/David Howhann/
Banda Odisea

Moderato $\text{♩} = 116$
7

24

46

56

64

74

79

86

102

113

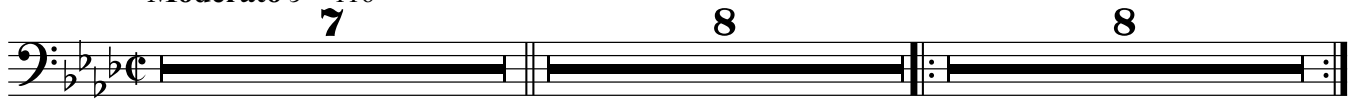
119

Trombone 2°
Instrumental

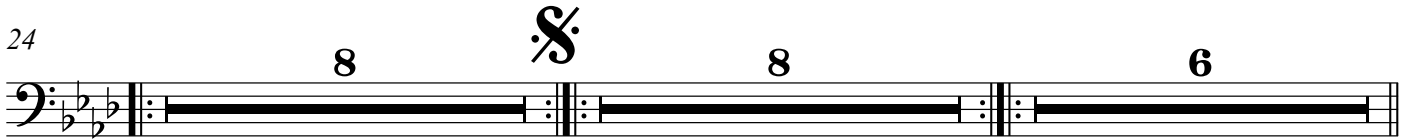
"Suave Y Tierno" Kent Gibson/David Howhann/
Banda Odisea

Moderato $\text{♩} = 116$
7

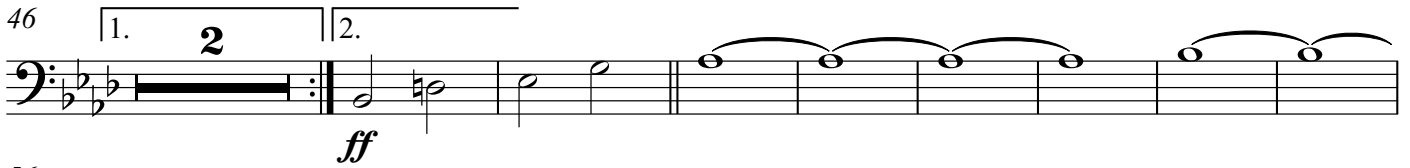
8 8



24 8 S 8 6



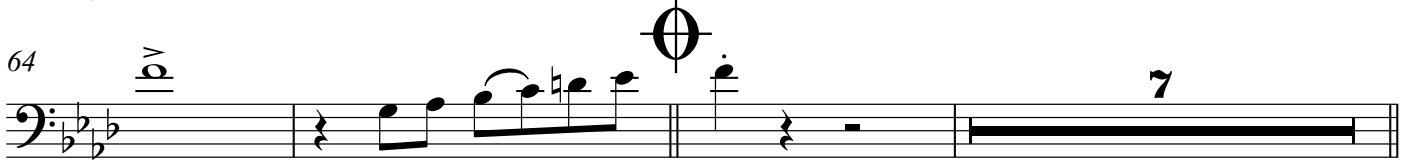
46 1. 2. 2. ff



56 2



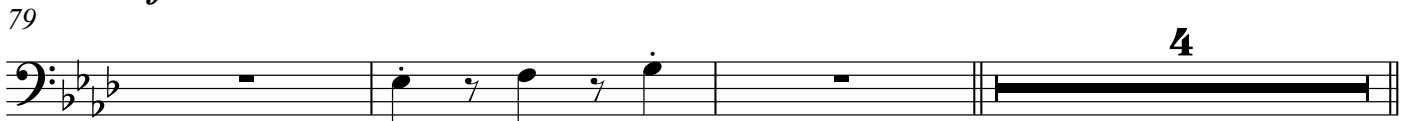
64 p 7



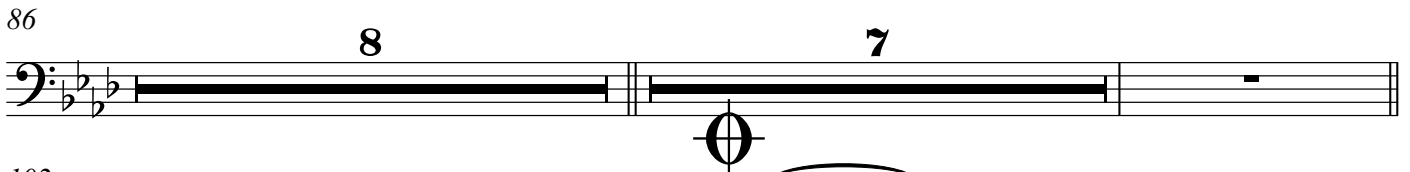
74 mf



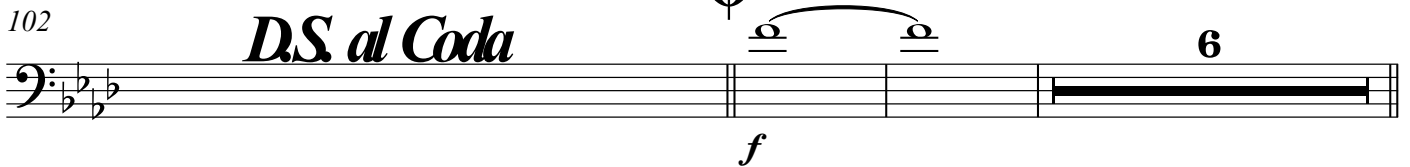
79 4



86 8 7



102 *D.S al Coda* f 6



113 ff



119 *Fine*



Trombone 3°
Instrumental

"Suave Y Tierno"

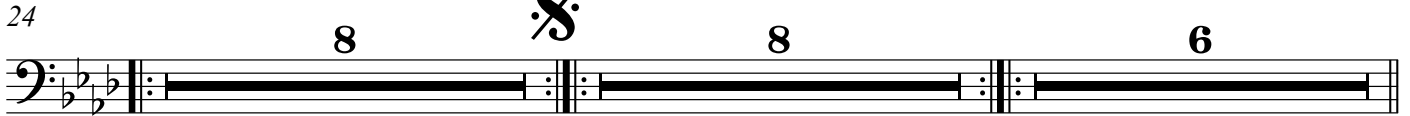
Kent Gibson/David Howhann/
Banda Odisea

Moderato $\text{♩} = 116$
7

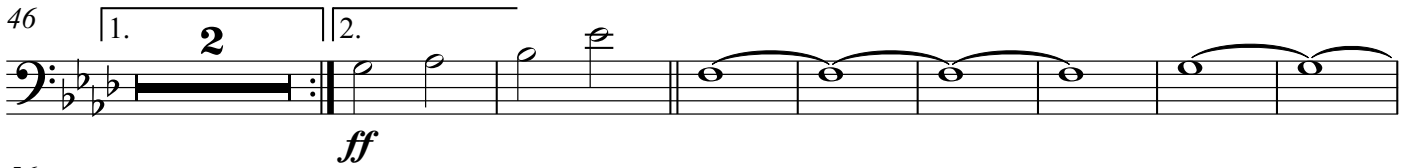
8 8



24 8 S 8 6



46 1. 2. 2. *ff*



56 2



64 O 7



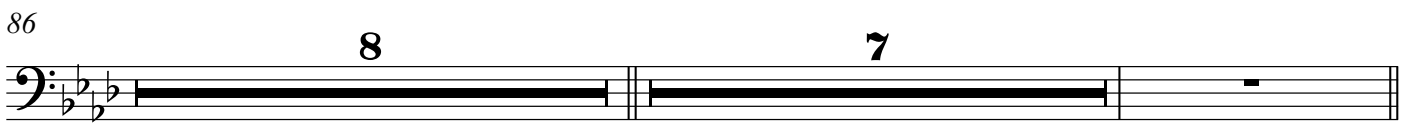
74 *mf*



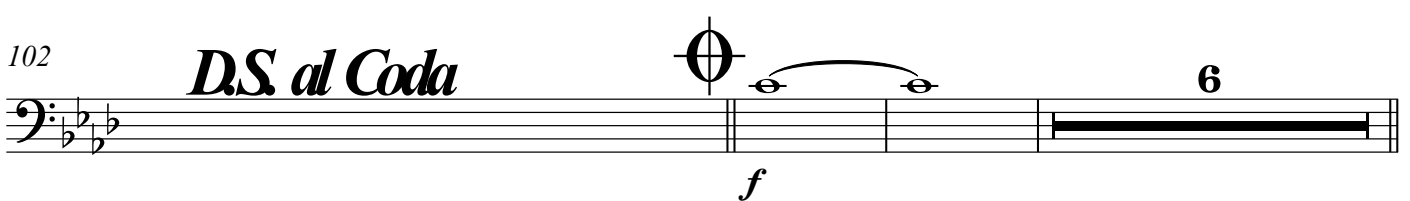
79 4



86 8 7



102 *D.S. al Coda* O *f* 6



113 *ff*



119 *Fine*



Altos Horn in Eb

"Suave Y Tierno"

Kent Gibson/David Howhann/
Banda Odisea

Instrumental

Moderato $\text{♩} = 116$

7 8

20 *f*

27 2 3 4 **§**

35

40 2

46 1. 3 4 3 4

54 *ff*

59

66 **⊕**

73 *f*

78

82 3

91 *f* 2 3 4

98

102 **DS al Coda** **⊕**

110 *f*

116 2 3 4 *ff* **Fine**

Drums
Instrumental

"Suave Y Tierno" Kent Gibson/David Howhann/
Banda Odisea

Moderato $\text{♩} = 116$

The image displays a drum score for the piece "Suave Y Tierno". It consists of ten staves of music, each representing a four-measure phrase. The notation is written on a single-line staff with a common time signature (C). Above the staff, rhythmic patterns are indicated by plus signs (+) and circles (o). The first staff (measures 1-4) shows a sequence of eighth notes with plus signs above them. The second staff (measures 5-8) features a similar eighth-note pattern in the first two measures, followed by a quarter note with a plus sign, and then a quarter rest. The third staff (measures 9-12) continues the eighth-note pattern with plus signs. The fourth staff (measures 13-16) has a quarter note with a plus sign, followed by a quarter rest. The fifth staff (measures 17-20) repeats the eighth-note pattern with plus signs. The sixth staff (measures 21-24) has a quarter note with a plus sign, followed by a quarter rest. The seventh staff (measures 25-28) repeats the eighth-note pattern with plus signs. The eighth staff (measures 29-32) has a quarter note with a plus sign, followed by a quarter rest. The ninth staff (measures 33-36) repeats the eighth-note pattern with plus signs. The tenth staff (measures 37-40) has a quarter note with a plus sign, followed by a quarter rest. A double bar line with repeat dots is placed at the end of the eighth staff. A double bar line with repeat dots is also placed at the end of the tenth staff. A section symbol (S) is located above the eighth staff, between measures 29 and 30.

Drums

42

Musical notation for drum part 42, showing a sequence of rhythmic patterns with '+' and 'o' symbols above the staff and corresponding notes below.

46

Musical notation for drum part 46, including a first ending (1.) and a second ending (2.) indicated by bracketed lines above the staff.

50

Musical notation for drum part 50, showing a sequence of rhythmic patterns with '+' and 'o' symbols above the staff and corresponding notes below.

54

Musical notation for drum part 54, showing a sequence of rhythmic patterns with '+' and 'o' symbols above the staff and corresponding notes below.

58

Musical notation for drum part 58, showing a sequence of rhythmic patterns with '+' and 'o' symbols above the staff and corresponding notes below.

62

Musical notation for drum part 62, showing a sequence of rhythmic patterns with '+' and 'o' symbols above the staff and corresponding notes below.



66

Musical notation for drum part 66, showing a sequence of rhythmic patterns with '+' and 'o' symbols above the staff and corresponding notes below.

70

Musical notation for drum part 70, showing a sequence of rhythmic patterns with '+' and 'o' symbols above the staff and corresponding notes below.

74

Musical notation for drum part 74, showing a sequence of rhythmic patterns with '+' and 'o' symbols above the staff and corresponding notes below.

78

Musical notation for drum part 78, showing a sequence of rhythmic patterns with '+' and 'o' symbols above the staff and corresponding notes below.

Drums

82

86

90

94

98

D.S. al Coda

102

108

112

116

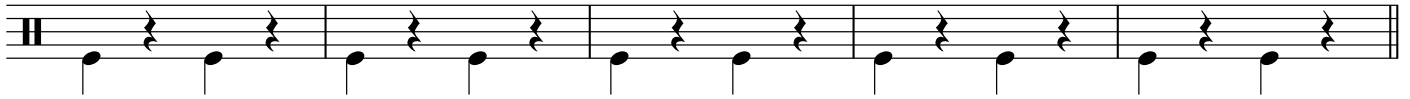
120

Fine

2

Bombo

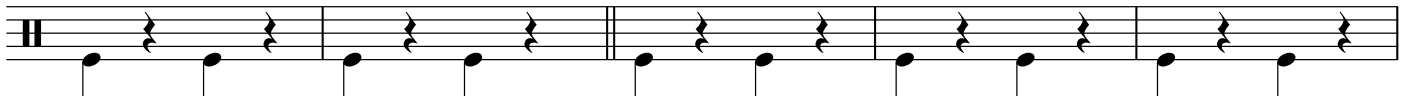
61



66



72



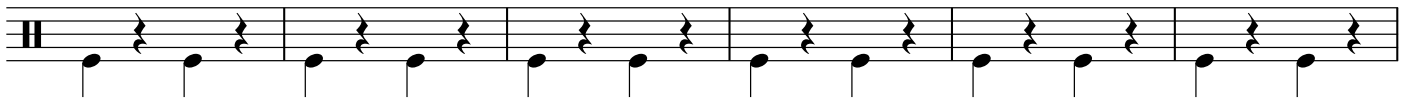
77



82



86



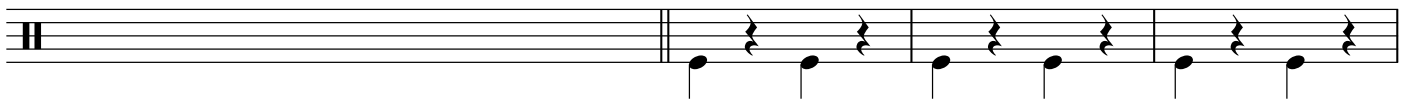
92



97



102

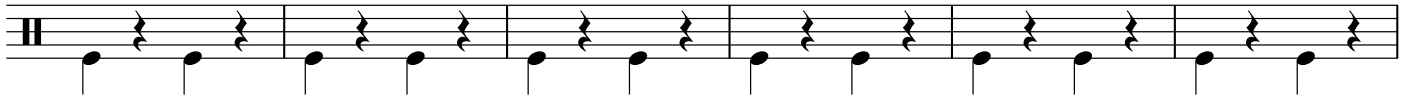


108



D.S. al Coda

113



119

