

4

4

4

3

2

2

AL DC Y DE A

4

4

4

3

⊕ AL DC Y DE ⊕ A ⊕

2

2

AL DC Y DE A

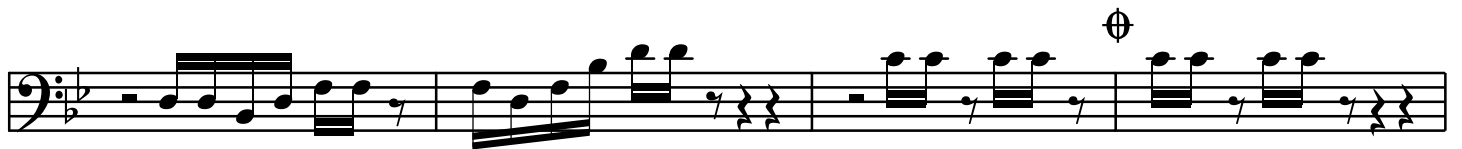
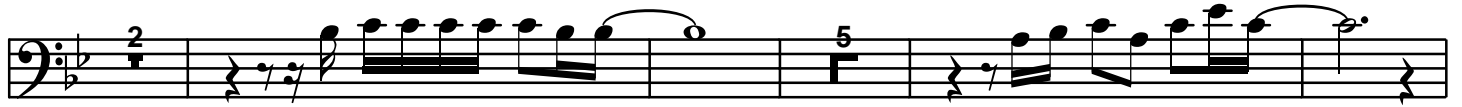
2

5

4

AL DC Y DE A

2



AL DC Y DE $\text{\$A}$ $\text{\$}$



AL DC Y DE

6

3

4

3

4

⊕

AL DC

6

3

4

3

4

⊕

AL DC

⊕

6

3

4

3

4

⊕

AL DC

⊕

The image shows a musical score for guitar, consisting of ten staves. The music is written in treble clef with a key signature of one sharp (F#) and a common time signature (C). The chords are indicated by letters below the staff: Am, D, G, and Em. The notation includes various rhythmic values such as quarter notes, eighth notes, and sixteenth notes, along with rests. The score is divided into sections by a double bar line and a repeat sign. The text "AL FINE DE A" is written at the end of the score.

⊕

AL § Y DE ⊕ A ⊕