



# - \*\* Caminos de guanajuato \*\* -

CLARINETE 2 EN SiB

"Banda 466"

W/5554775498

**f**/Partituras y transcripciones para banda

♩=220      4      6      ♩=140

1-4      5-10

17

22-24

28

29-36

43

45-54      59-66

67

♩=220

75-78      79-80      81-82      83-86

90

91-98

104

# \*\* Caminos de guanajuato \*\*

CLARINETE 3 EN SIb

"Banda 466"

W/5554775498

**F**/Partituras y transcripciones para banda

♩=220      4      6      ♩=140

3/4      4/4      6/4      2/4

1-4      5-10

17

3

22-24

28

8

29-36

43

10

45-54

8

59-66

67

♩=220

4      1. 2      2. 2      4

3/4      2/4      2/4      4/4

75-78      79-80      81-82      83-86

90

8

91-98

104

4

107-110



# \*\* Caminos de guanajuato \*\*

TROMBÓN 2 EN C

"Banda 466"

W/5554775498

**F**/Partituras y transcripciones para banda

♩=220

3 4 3

1-4 5-7

11

♩=140

21

8

22-29

10 11

35-44 49-59

61

10

65-74

77

♩=220

1. 2. 9

3 2 2 2

4 4 4

79-80 81-82 83-91

94

10

97-106

108



# \*\* Caminos de guanajuato \*\*

TROMBÓN 1 EN Si $\flat$

"Banda 466"

W/5554775498

**F**/Partituras y transcripciones para banda

♩=220

4 3

1-4 5-7

11 ♩=140

21

8

22-29

10 11

35-44 49-59

61

10

65-74

78 ♩=220

1. 2 2 9

3 4 79-80 2 4 81-82 83-91

94

10

97-106

109

# - \*\* Caminos de guanajuato \*\* -

TROMBÓN 2 EN Si $\flat$

"Banda 466"

W/5554775498

**F**/Partituras y transcripciones para banda

♩=220

4 3

1-4 5-7

11 ♩=140

20

8

22-29

10 11

10 11

35-44 49-59

61

10

65-74

78 ♩=220

1. 2 2 9

3 4 79-80 4 81-82 83-91

94

10

97-106

109

# - \*\* Caminos de guanajuato \*\* -

TROMBÓN 3 EN SI $\flat$

"Banda 466"

W/5554775498

**F**/Partituras y transcripciones para banda

1-4 5-7

11

20 8 22-29

10 11 35-44 49-59

61 10 65-74

78 1. 2 2 9 79-80 81-82 83-91

94 10 97-106

109

# - \*\* Caminos de guanajuato \*\* -

TROMPETA 1 EN Sib

"Banda 466"

W/5554775498

**F**/Partituras y transcripciones para banda

Musical score for Trompete 1 in B-flat, consisting of five staves of music. The score is written in treble clef with a key signature of one flat (B-flat). The tempo is marked as quarter note = 220. The score includes various musical notations such as rests, notes, beams, slurs, and dynamic markings. The piece is divided into measures, with measure numbers 1-3, 9-10, 11, 21, 22-48, 24, 55-78, 84, and 87-110 indicated. The score features several triplets and a 2/4 time signature change. A large watermark 'Marcos Lopez' is visible across the page.

# - \*\* Caminos de guanajuato \*\* -

TROMPETA 2 EN SIb

"Banda 466"

W/5554775498

F/Partituras y transcripciones para banda

Musical score for Trompete 2 in B-flat, consisting of five staves of music. The score is written in treble clef with a key signature of one flat (B-flat). The tempo is marked as quarter note = 220. The piece is in 3/4 time, with a key signature change to 2/4 at the end of the first staff. The score includes various musical notations such as triplets, slurs, and dynamic markings. The measures are numbered as follows: 1-3, 9-10, 11, 20, 22-48, 24, 55-78, 84, and 87-110. A large watermark 'Marcos Lopez' is visible across the page.

# \*\* Caminos de guanajuato \*\*

TROMPETA 3 EN SIb

"Banda 466"

W/5554775498

F/Partituras y transcripciones para banda

Musical score for Trompeta 3 in B-flat, consisting of six staves of music. The score includes various musical notations such as treble clef, key signature of one flat (B-flat), time signatures (3/4, 2/4, 3/4, 4/4), and dynamic markings (f). The score is divided into measures with measure numbers and ranges indicated above or below the staff. The first staff starts at measure 1 with a tempo marking of quarter note = 220 and a 3-measure rest. The second staff starts at measure 11 with a tempo marking of quarter note = 140. The third staff starts at measure 20 with a 27-measure rest. The fourth staff starts at measure 54 with a tempo marking of quarter note = 220 and a 24-measure rest. The fifth staff starts at measure 83 with a 24-measure rest. The sixth staff starts at measure 111. The score includes various musical notations such as treble clef, key signature of one flat (B-flat), time signatures (3/4, 2/4, 3/4, 4/4), and dynamic markings (f). The score is divided into measures with measure numbers and ranges indicated above or below the staff. The first staff starts at measure 1 with a tempo marking of quarter note = 220 and a 3-measure rest. The second staff starts at measure 11 with a tempo marking of quarter note = 140. The third staff starts at measure 20 with a 27-measure rest. The fourth staff starts at measure 54 with a tempo marking of quarter note = 220 and a 24-measure rest. The fifth staff starts at measure 83 with a 24-measure rest. The sixth staff starts at measure 111.

# - \*\* Caminos de guanajuato \*\* -

SAXOR EN Mi $\flat$

"Banda 466"

W/5554775498

**f**/Partituras y transcripciones para banda

$\text{♩} = 220$



2

# SAXOR EN M $\flat$

73

4/4

79  $\text{♩} = 220$

3/4 2/4

86

4/4

94

4/4

102

4/4

109

4/4

# - \*\*\* Caminos de guanajuato \*\*\* -

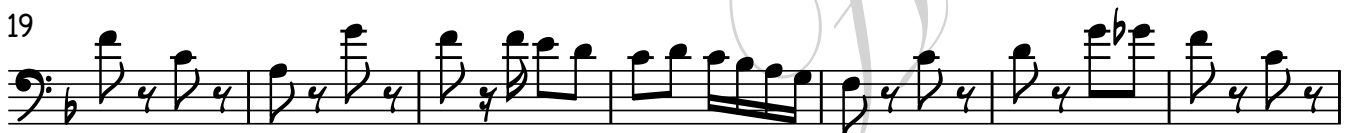
TUBA EN Si $\flat$

"Banda 466"

W/5554775498

$\text{♩} = 220$

**F**/Partituras y transcripciones para banda



2

TUBA EN Si $\flat$

68

74

79

84

90

97

104

109