

CLARINET IN B \flat 1

TOREERO

BANDA ÉCINERA

CUMBIA CARNAVALERA

16/07/2013

3 3 10

10

16

22

28

34

40

12 2

46 5

2 CLARINET IN B \flat 1 TORERO

Measures 2-5: Clarinet in B \flat 1. Musical notation showing a melodic line with slurs and triplets. A circled 'A' is above the first measure.

Measures 6-7: Clarinet in B \flat 1. Musical notation showing a melodic line with a circled 'X' above measure 6. The piece ends with a double bar line and the instruction **D.S. AL CODA**.

Measures 8-10: Clarinet in B \flat 1. Musical notation showing a melodic line with a circled 'X' above measure 8, a '3' above measure 9, and a circled 'X' above measure 10.

Measures 11-12: Clarinet in B \flat 1. Musical notation showing a melodic line with a circled 'X' above measure 11. The piece ends with a double bar line and the instruction **A LA A X A X**.

Measures 13-15: Clarinet in B \flat 1. Musical notation showing a melodic line with a circled 'X' above measure 13, a '2' above measure 14, a '12' above measure 15, and circled 'X's above measures 14 and 15.

Measures 16-18: Clarinet in B \flat 1. Musical notation showing a melodic line with a circled 'X' above measure 16, a '6' above measure 17, and a circled 'X' above measure 18.

CLARINET IN B \flat 2

TOREZO

BANDA ÉCINERA

CUMBIA CARNAVALERA
16/07/2013

Musical score for Clarinet in B \flat 2, titled "TOREZO" by Banda Écinera. The score consists of eight staves of music in 2/4 time with a key signature of one sharp (F#). The first staff begins with a rest followed by triplet markings (3) and a decuplet marking (10). The second through sixth staves feature continuous eighth-note passages with various phrasing slurs. The seventh staff includes a decuplet marking (12) and a double bar line. The eighth staff concludes with a quintuplet marking (5) and a repeat sign.

2 CLARINET IN B \flat 2

TORERO



CLARINET IN B \flat 3

TORERO

BANDA ÉCINERA

CUMBIA CARNAVALERA

16/07/2013

Musical score for Clarinet in B \flat 3, titled "TORERO" by Banda Écinera. The score is in 3/4 time and G major. It consists of eight staves of music. The first staff has a rest followed by triplet eighth notes and a decuplet eighth note. The second staff features a melodic line with a slur and a triplet of sixteenth notes. The third and fourth staves continue the melodic line with slurs. The fifth staff has a circled "8" above the first measure. The sixth staff continues the melodic line. The seventh staff has a circled "12" above the first measure and a circled "2" above the second measure. The eighth staff has a circled "5" above the first measure and a circled "8" above the second measure.



TROMBONE I

TOREERO

BANDA ÉCINERA

CUMBIA CARNAVALERA
16/07/2013

D.S. AL CODA

2 TROMBONE 1

TORERO

3

A LA A Y X A X

X

7

7

TROMBONE 2

TOREZO

BANDA ÉCINERA

CUMBIA CARNAVALERA

16/07/2013

2 3 3 2 5 7 10 11

A X C

D.S. AL CODA

2 TROMBONE 2

TOREERO

④ 3 A LA (A) Y (X) A (X)

(X)

TROMBONE 3

TOREZO

BANDA ÉCINERA

CUMBIA CARNAVALERA
16/07/2013

8

10

7

7

11

X

D.S. AL CODA

2 TROMBONE 3

TOREDO

3 A LA A Y X A X

7

7

TRUMPET IN B♭ 1

TOREERO

BANDA ÉCINERA

CUMBIA CARNAVALEIRA

16/07/2013

8

10

14

18

22

26

30

34

S

2 TRUMPET IN B \flat 1

TORERO

88

100

D.S. AL CODA

106

115

ALA A X A X

115

125

133

TRUMPET IN B♭ 2

TORERO

BANDA ÉCINERA

CUMBIA CARNAVALERA

16/07/2013

8

10

4

S

8

6

2 TRUMPET IN B \flat 2

TORERO



TRUMPET IN B♭ 3

TORERO

BANDA ÉCINERA

CUMBIA CARNAVALERA

16/07/2013

8

10

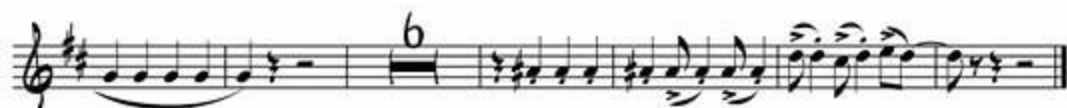
4 8 2 2

8

6

2 TRUMPET IN B♭ 3

TORERO



BASS TUBA

TORERO

BANDA ÉNGINEIRA

CUMSIA CARNAVALERA

16/07/2015

The image displays a musical score for Bass Tuba, consisting of ten staves of music. The score is written in bass clef with a key signature of one flat (B-flat major or D minor) and a 2/4 time signature. The music features a variety of rhythmic patterns, including eighth and sixteenth notes, and rests. There are several dynamic markings, such as *mf* and *f*, and articulation marks like accents and slurs. A square box containing a circled '8' is placed above the eighth staff. The score concludes with a double bar line and repeat dots.

