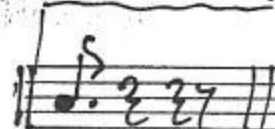
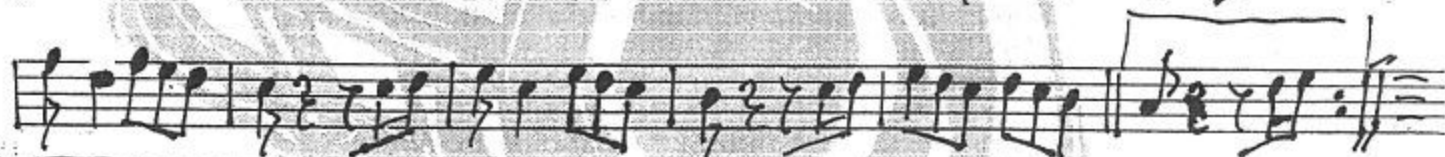
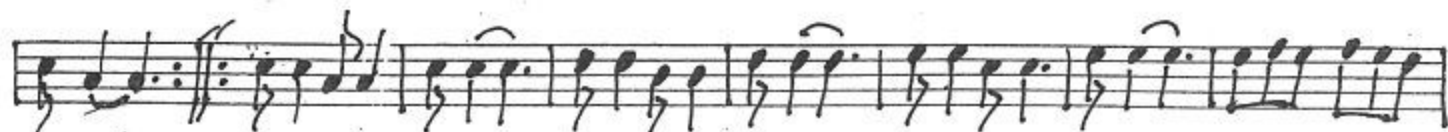
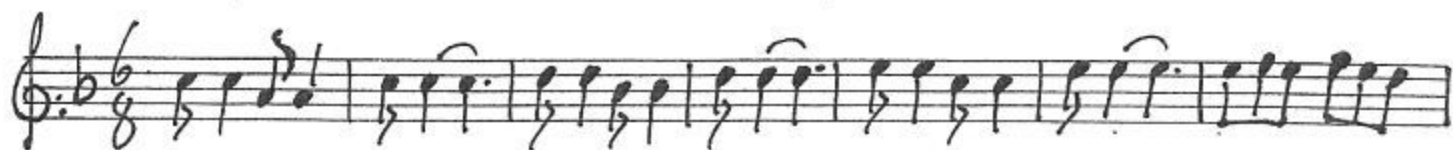


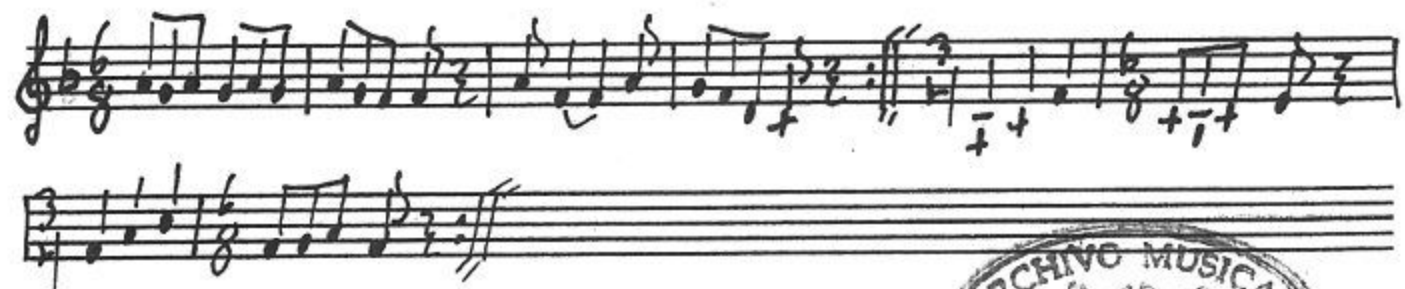
CLAR. 1



CLAR. 2



CLAR. 3



MES

TROMPETA 1



TROMPETA 2

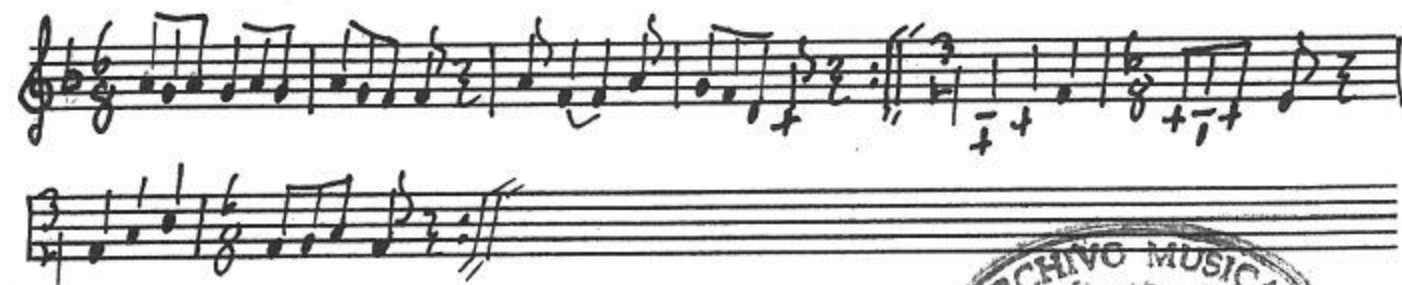
Handwritten musical notation for Trompa 2, first system. It consists of two staves with treble clefs and a key signature of one flat. The music features eighth and sixteenth notes with various articulations and slurs.

Handwritten musical notation for Trompa 2, second system. The first staff has a treble clef and a key signature of one flat, with '2' above several notes and '++' below the first two. The second staff has a bass clef and a key signature of one flat. The music includes eighth and sixteenth notes with slurs.

Handwritten musical notation for Trompa 2, third system. The first staff has a treble clef and a key signature of one flat. The second staff has a bass clef and a key signature of one flat. The music includes eighth and sixteenth notes with slurs.



TROMPETA 3



MES

Toritos

Trombon



Trombon 2^o



Saxores

Handwritten musical notation for the first system, consisting of two staves. The top staff uses a treble clef and the bottom staff uses a bass clef. The time signature is 6/8. The notation includes various chords and notes, with repeat signs at the end of each staff.

Handwritten musical notation for the second system, consisting of two staves. The top staff uses a treble clef and the bottom staff uses a bass clef. The time signature is 6/8. The notation features dense chordal textures and repeated patterns, with repeat signs at the end of each staff.

Handwritten musical notation for the third system, consisting of two staves. The top staff uses a treble clef and the bottom staff uses a bass clef. The time signature is 6/8. The notation features dense chordal textures and repeated patterns, with repeat signs at the end of each staff.



Tuba (Bb)

Handwritten musical notation for the first system of the Tuba part. It consists of two staves in bass clef with a 6/8 time signature. The music features a series of eighth and quarter notes with various accidentals, including a double sharp (x) and a double flat (bb). The piece concludes with a double bar line and repeat dots.

Handwritten musical notation for the second system of the Tuba part. It consists of two staves in bass clef with a 6/8 time signature. The music continues with eighth and quarter notes, including some beamed eighth notes. The system ends with a double bar line and a 3/4 time signature.

Handwritten musical notation for the third system of the Tuba part. It consists of two staves in bass clef with a 6/8 time signature. The music continues with eighth and quarter notes. The system ends with a double bar line and a 3/4 time signature.

