

AL $\flat\flat$ YDE $\sharp\sharp$ A

10 10

2

16

18 16

AL YDE A

4

5

10 S

10

2

16

G C

18

16

AL S YDE A

4

5

20

12

12

14

9

AL YDE A

20

3

12

12

14

9

AL: YDE A

3

20

7

3

12

12

14

9

AL: YDE A

7

3

1era trompeta

UN DIA A LA VEZ

VICTOR M CAMACHO

10

C

D⁷

18

G

G⁷

D⁷

20

4

AL S YDE A

20

5

10

C

D⁷

18

20

4

D⁷

AL YDE A

20

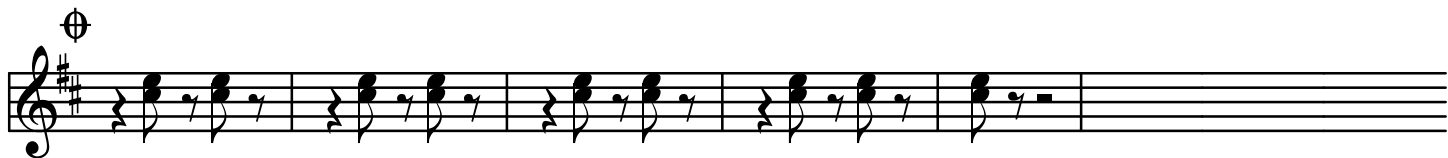
5

3era trompeta

UN DIA A LA VEZ

VICTOR M CAMACHO

The image displays a musical score for guitar, consisting of 12 staves of music. The score is written in G major (one sharp) and 3/4 time. The first staff includes a '2' above the first measure, indicating a second fret. The music consists of a series of chords, primarily triads and dyads, with stems pointing downwards. A repeat sign is present at the end of the fifth staff. A section symbol (a circled 'S') is located above the second staff. The notation is clean and minimalist, focusing on the harmonic structure of the piece.



AL YDE

The image shows two staves of musical notation in bass clef with a key signature of one sharp (F#). The top staff contains a melodic line with various note values and rests, including a fermata. The bottom staff contains a few notes, including a chord marked with a '5' and a fermata.