

=UN SUSPIRO GENTE DE ACCIONAR

Clarinete 1 en Sib

=BANDA LA INDICADA=

22/Octubre/2021



♩=180

7

13

27

41

53

61

68

74

2

Clarinete 2 en Sib

115

13

134

9

146

8

Clarinete 3 en Sib

115

13

134

9

146

8

=UN SUSPIRO GENTE DE ACCIONAR

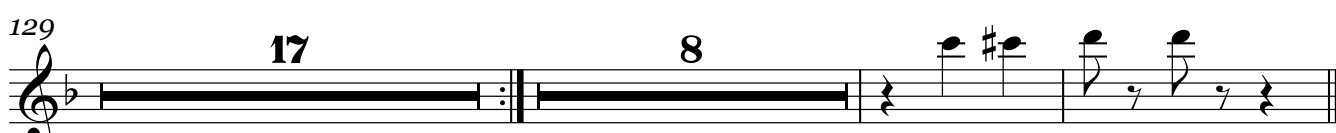
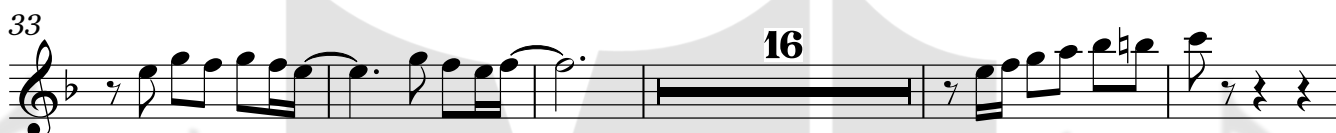
Trompeta 1 en Sib

=BANDA LA INDICADA=

22/Octubre/2021



$\text{♩} = 180$



=UN SUSPIRO GENTE DE ACCIONAR

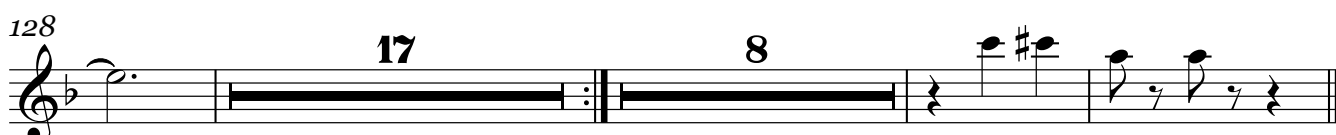
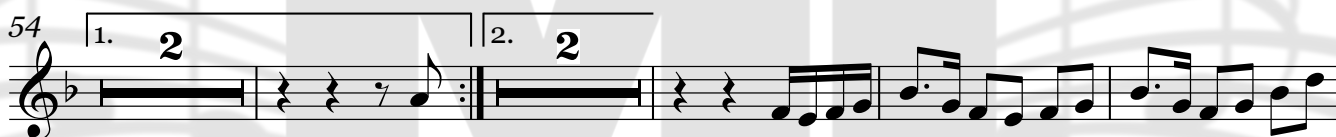
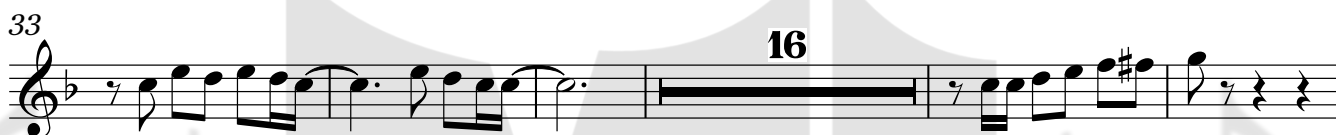
Trompeta 2 en Sib

=BANDA LA INDICADA=

22/Octubre/2021



$\text{♩} = 180$



=UN SUSPIRO GENTE DE ACCIONAR

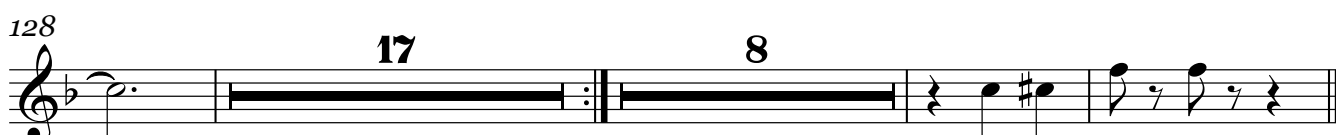
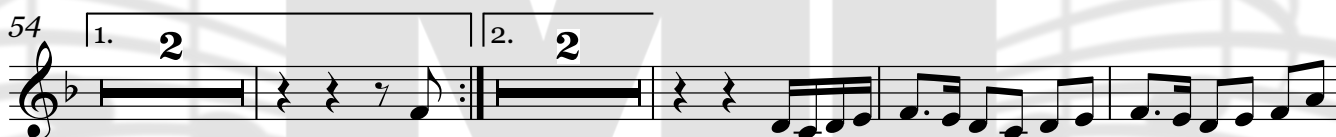
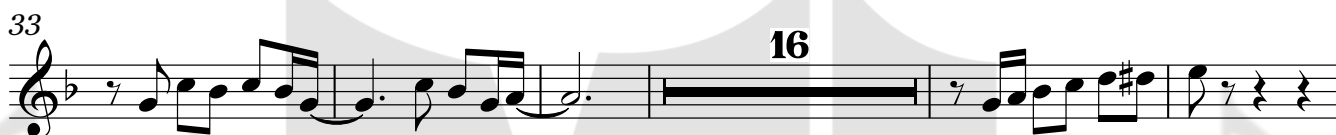
Trompeta 3 en Sib

=BANDA LA INDICADA=

22/Octubre/2021



$\text{♩} = 180$



=UN SUSPIRO GENTE DE ACCIONAR

Trombón 1 en Sib

=BANDA LA INDICADA=

22/Octubre/2021



$\text{♩} = 180$

Musical staff 1 (measures 1-6). Includes a repeat sign and triplets.

Musical staff 2 (measures 7-13). Includes a slur and a fermata.

Musical staff 3 (measures 14-21). Includes triplets and a second ending bracket.

Musical staff 4 (measures 22-44). Includes a first ending bracket and a fermata.

Musical staff 5 (measures 45-56). Includes a first ending bracket and a fermata.

Musical staff 6 (measures 57-63). Includes a second ending bracket and a fermata.

Musical staff 7 (measures 64-79). Includes a first ending bracket and a fermata.

Musical staff 8 (measures 80-90). Consists of a continuous eighth-note pattern.

Musical staff 9 (measures 91-97). Includes a fermata.

Musical staff 10 (measures 98-113). Includes a first ending bracket and a fermata.

Musical staff 11 (measures 114-125). Includes a first ending bracket and a fermata.

2

Trombón 1 en Sib

129

13

148

=UN SUSPIRO GENTE DE ACCIONAR

Trombón 2 en Sib

=BANDA LA INDICADA=

22/Octubre/2021



$\text{♩} = 180$

Musical staff 1 (measures 1-6). Includes triplets and a fermata.

Musical staff 2 (measures 7-13). Includes a fermata.

Musical staff 3 (measures 14-20). Includes triplets and a fermata.

Musical staff 4 (measures 21-33). Includes a fermata.

Musical staff 5 (measures 34-43). Includes a fermata.

Musical staff 6 (measures 44-53). Includes first and second endings.

Musical staff 7 (measures 54-61). Includes a fermata.

Musical staff 8 (measures 62-81). Includes a fermata.

Musical staff 9 (measures 82-95). Includes a fermata.

Musical staff 10 (measures 96-112). Includes a fermata.

Musical staff 11 (measures 113-124). Includes a fermata.

Trombón 2 en Si \flat

129

13

148

=UN SUSPIRO GENTE DE ACCIONAR

Trombón 3 en Sib

=BANDA LA INDICADA=

22/Octubre/2021



$\text{♩} = 180$

Musical staff 1 (measures 1-6). Includes triplets and a repeat sign.

Musical staff 2 (measures 7-13). Includes a repeat sign and a fermata.

Musical staff 3 (measures 14-20). Includes triplets and a fermata.

Musical staff 4 (measures 21-38). Includes a fermata and a 18-measure rest.

Musical staff 5 (measures 39-43). Includes a 5-measure rest.

Musical staff 6 (measures 44-53). Includes first and second endings.

Musical staff 7 (measures 54-61). Includes a 15-measure rest.

Musical staff 8 (measures 62-88). Includes a repeat sign.

Musical staff 9 (measures 89-95). Includes a fermata.

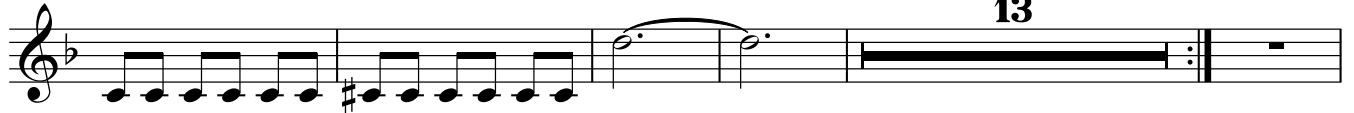
Musical staff 10 (measures 96-112). Includes a 12-measure rest.

Musical staff 11 (measures 113-120). Includes a 12-measure rest.

2

Trombón 3 en Sib

129



147



=UN SUSPIRO GENTE DE ACCIONAR

Trombón 1 en C

=BANDA LA INDICADA=



22/Octubre/2021

$\text{♩} = 180$

First staff of music, measures 1-5. Includes a repeat sign and triplets.

Second staff of music, measures 6-11. Includes triplets.

Third staff of music, measures 12-18. Includes triplets.

Fourth staff of music, measures 19-23. Includes a measure rest of 2 measures and a measure rest of 18 measures.

Fifth staff of music, measures 24-33. Includes a measure rest of 5 measures.

Sixth staff of music, measures 34-43. Includes first and second endings, each 2 measures long.

Seventh staff of music, measures 44-58. Includes a measure rest of 15 measures.

Eighth staff of music, measures 59-88. Includes a repeat sign.

Ninth staff of music, measures 89-95.

Tenth staff of music, measures 96-107. Includes a measure rest of 12 measures.

Eleventh staff of music, measures 108-120. Includes a measure rest of 12 measures.

2

Trombón 1 en C

129

Musical staff for Trombone 1, measures 129-147. The staff shows a sequence of eighth notes, followed by a double bar line with a repeat sign and the number 13. The key signature has two flats and the time signature is 4/4.

148

Musical staff for Trombone 1, measures 148-156. The staff shows a sequence of notes with slurs and accents, ending with a double bar line. The key signature has two flats and the time signature is 4/4.

=UN SUSPIRO GENTE DE ACCIONAR

Trombón 2 en C

=BANDA LA INDICADA=

22/Octubre/2021



$\text{♩} = 180$

First staff of music, measures 1-5. Includes a repeat sign and triplets.

Second staff of music, measures 6-11. Includes triplets.

Third staff of music, measures 12-18. Includes triplets.

Fourth staff of music, measures 19-23. Includes a fermata and a measure rest of 18 measures.

Fifth staff of music, measures 24-33. Includes a measure rest of 5 measures.

Sixth staff of music, measures 34-43. Includes first and second endings, each with a measure rest of 2 measures.

Seventh staff of music, measures 44-58. Includes a measure rest of 15 measures.

Eighth staff of music, measures 59-88. Includes a repeat sign.

Ninth staff of music, measures 89-95. Includes a fermata.

Tenth staff of music, measures 96-107. Includes a measure rest of 12 measures.

Eleventh staff of music, measures 108-119. Includes a measure rest of 12 measures.

2

Trombón 2 en C

129

13

148

=UN SUSPIRO GENTE DE ACCIONAR

Trombón 3 en C

=BANDA LA INDICADA=

22/Octubre/2021



♩=180

First staff of music, measures 1-6. Includes triplets and a fermata.

Second staff of music, measures 7-13. Includes a fermata.

Third staff of music, measures 14-21. Includes triplets and a fermata.

Fourth staff of music, measures 22-30. Includes a fermata and a 18-measure rest.

Fifth staff of music, measures 31-38. Includes a 5-measure rest and first/second endings.

Sixth staff of music, measures 39-46. Includes a 2-measure rest and first/second endings.

Seventh staff of music, measures 47-54. Includes a 15-measure rest.

Eighth staff of music, measures 55-62. Includes a fermata.

Ninth staff of music, measures 63-70. Includes a fermata.

Tenth staff of music, measures 71-78. Includes a 12-measure rest.

Eleventh staff of music, measures 79-86. Includes a 12-measure rest.

2

Trombón 3 en C

129

Musical staff for Trombone 3 in C, measures 129-133. The staff is in bass clef with a key signature of two flats (B-flat and E-flat). Measures 129 and 130 contain eighth-note patterns. Measure 131 features a dotted half note with a slur. Measure 132 is a whole rest, with the number '13' written above it. Measure 133 contains a dotted half note with a slur.

148

Musical staff for Trombone 3 in C, measures 148-152. The staff is in bass clef with a key signature of two flats. Measure 148 starts with a dotted half note with a slur. Measures 149 and 150 continue with dotted half notes and slurs. Measure 151 contains quarter notes. Measure 152 ends with a quarter note, a quarter rest, and a quarter note.

=UN SUSPIRO GENTE DE ACCIONAR

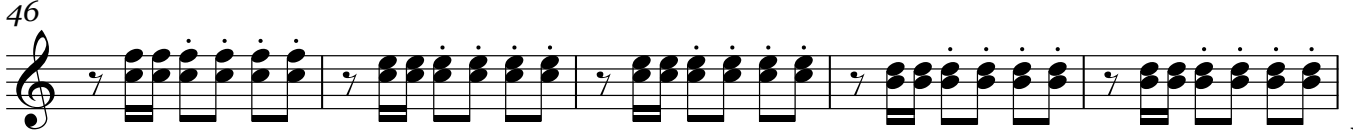
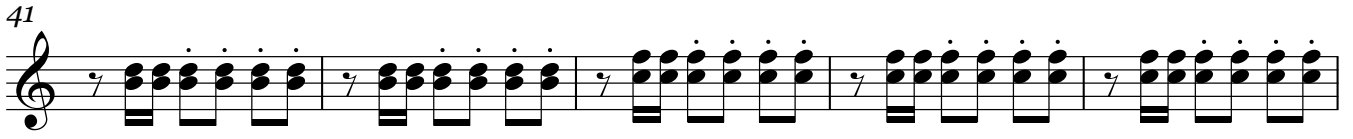
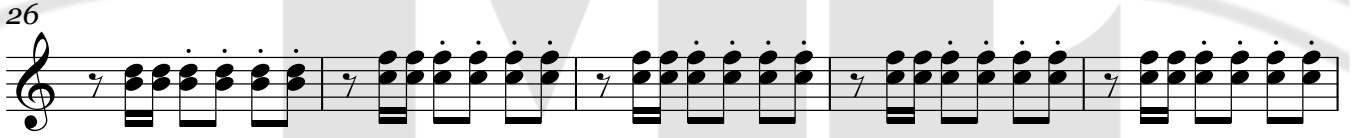
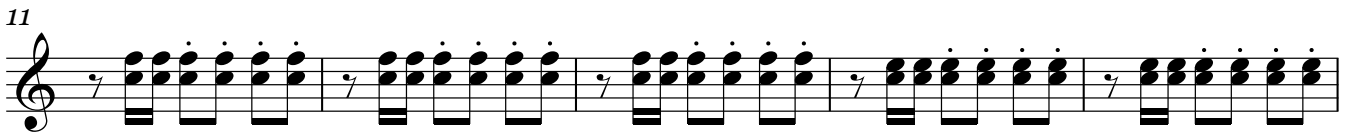
saxor en Mi \flat

=BANDA LA INDICADA=



22/Octubre/2021

$\text{♩} = 180$



51 1.

57 2.

63 2

70

76

83

88

93

98

103

=UN SUSPIRO GENTE DE ACCIONAR

Tuba en Sib

=BANDA LA INDICADA=

22/Octubre/2021



$\text{♩} = 180$

First staff of music, starting with a treble clef, a key signature of one flat (B-flat), and a 3/4 time signature. It begins with a repeat sign and contains several measures of music.

Second staff of music, starting at measure 8. It continues the melodic line with various note values and rests.

Third staff of music, starting at measure 14. It features a triplet of eighth notes in the final measure of the staff.

Fourth staff of music, starting at measure 19. It continues the piece with a mix of eighth and quarter notes.

Fifth staff of music, starting at measure 26. It includes a triplet of eighth notes in the final measure.

Sixth staff of music, starting at measure 32. It features a triplet of eighth notes in the first measure.

Seventh staff of music, starting at measure 38. It continues the melodic development.

Eighth staff of music, starting at measure 45. It includes a triplet of eighth notes in the first measure.

Ninth staff of music, starting at measure 52. It concludes with a first ending (1.) and a second ending (2.) marked with repeat signs.

Tuba en Sib

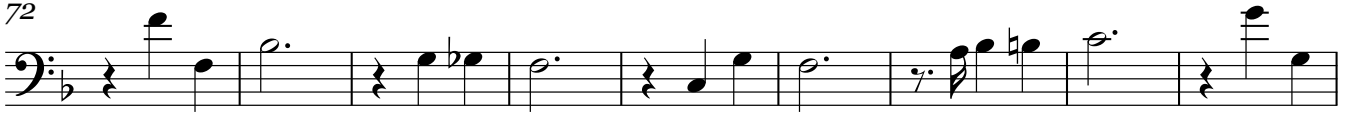
58



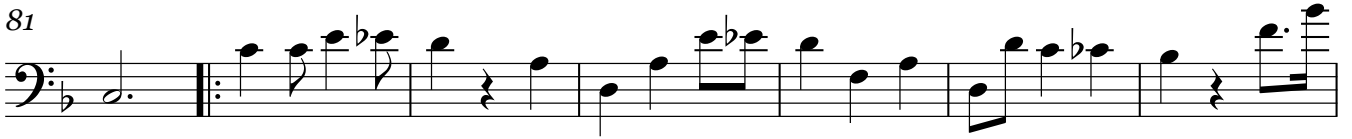
64



72



81



88



94



100



106



113



119



126



Tuba en Sib

3

131



58

64

72

81

88

94

100

106

113

119

126

132

139

145

150