

=UNA RAYA MAS AL TIGRE=

Clarinete 1 en Sib

=JULION ALVAREZ FT BANDA LA ELEMENTAL=



♩=225

13

21

31

49

72

92

100

108

115

COPYRIGHT © PARTITURAS MARCOS LOPEZ AMBROSIO

W/ 5554775498

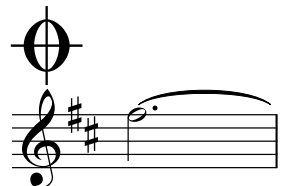
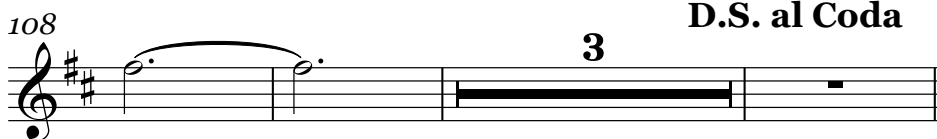
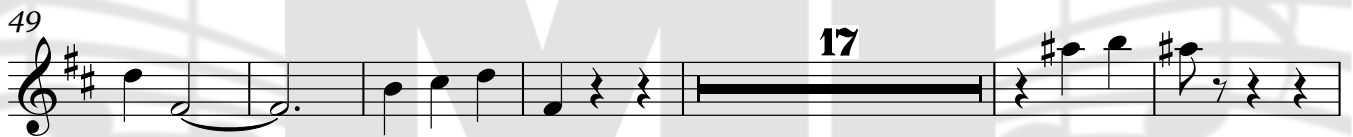
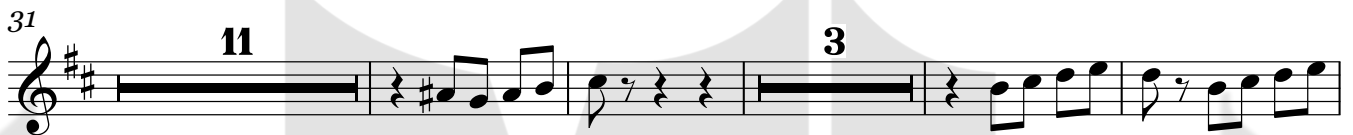
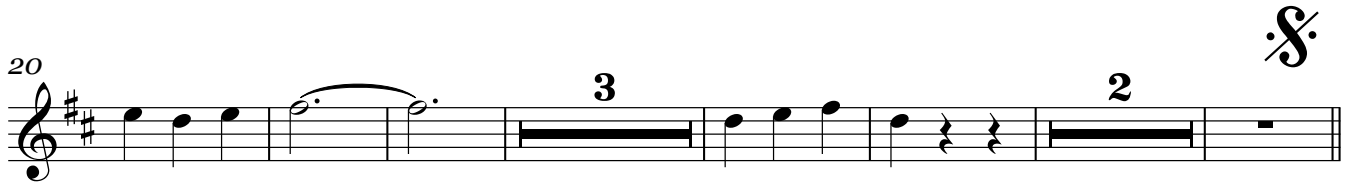
=UNA RAYA MAS AL TIGRE=

Clarinete 2 en Sib

=JULION ALVAREZ FT BANDA LA ELEMENTAL=



♩=225



COPYRIGHT © PARTITURAS MARCOS LOPEZ AMBROSIO

W/ 5554775498

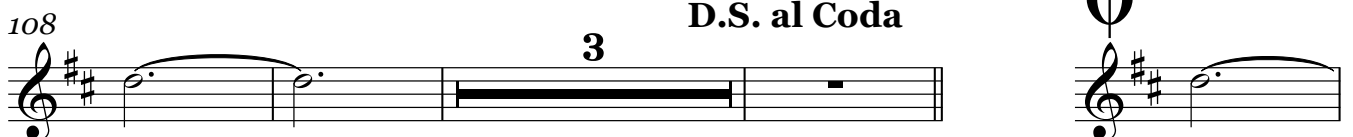
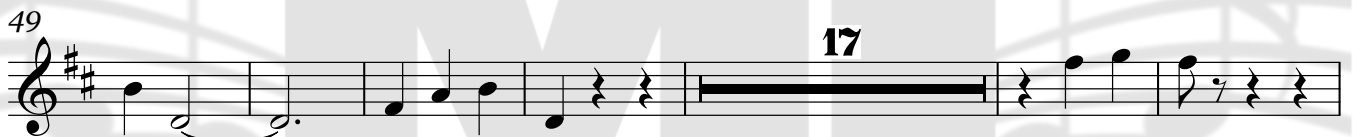
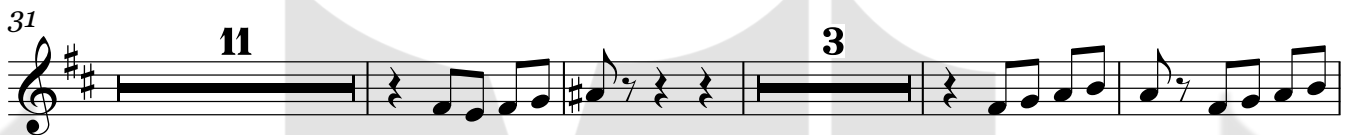
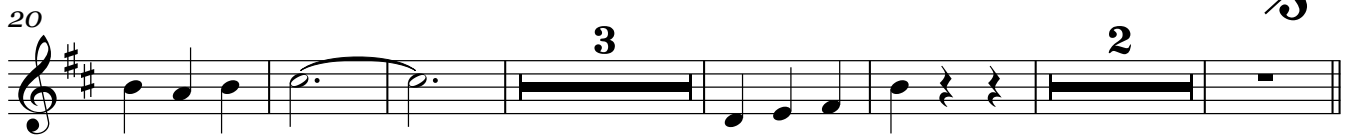
=UNA RAYA MAS AL TIGRE=

Clarinete 3 en Sib

=JULION ALVAREZ FT BANDA LA ELEMENTAL=



$\text{♩} = 225$



COPYRIGHT © PARTITURAS MARCOS LOPEZ AMBROSIO

W/ 5554775498

=UNA RAYA MAS AL TIGRE=

Trompeta 1 en Sib

=JULION ALVAREZ FT BANDA LA ELEMENTAL=



♩=225

11

18

3

28

2

10

45

6

4

60

8

74

10

3

To Coda

92

2

100

108

3

D.S. al Coda

115

=UNA RAYA MAS AL TIGRE=

Trompeta 2 en Sib

=JULION ALVAREZ FT BANDA LA ELEMENTAL=



♩=225

11

18

28

45

60

74

92

100

108

115

=UNA RAYA MAS AL TIGRE=

Trompeta 3 en Sib

=JULION ALVAREZ FT BANDA LA ELEMENTAL=



♩=225

11

18

3

28

2

10

45

6

4

60

8

74

10

3

To Coda

92

2

100

108

3

D.S. al Coda

115

COPYRIGHT © PARTITURAS MARCOS LOPEZ AMBROSIO

W/ 5554775498

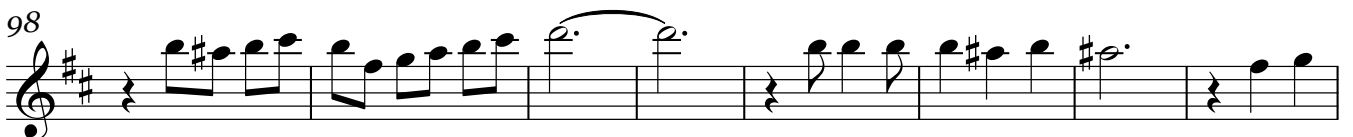
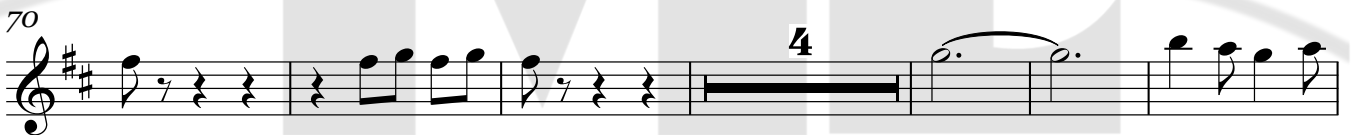
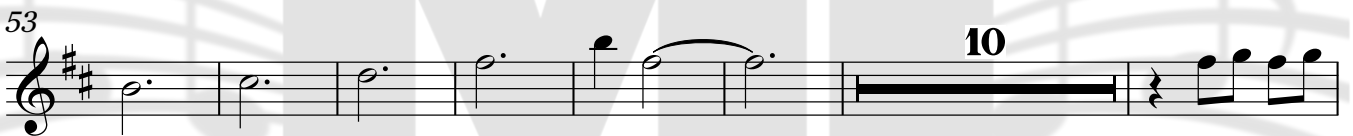
UNA RAYA MAS AL TIGRE

Trombón 1 en Sib

=JULION ALVAREZ FT BANDA LA ELEMENTAL=



♩=225



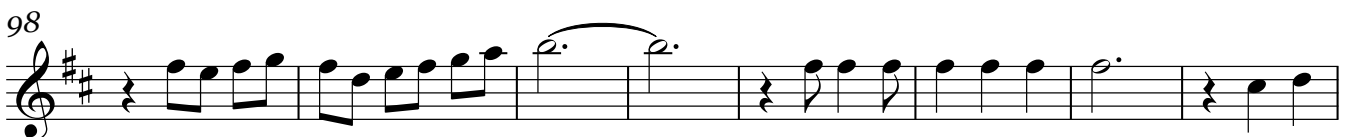
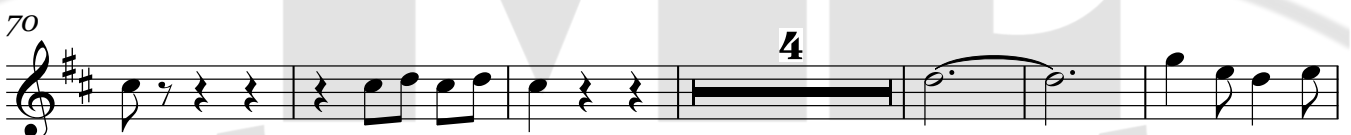
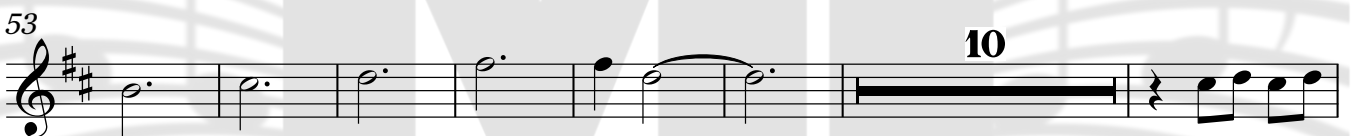
UNA RAYA MAS AL TIGRE

Trombón 2 en Sib

=JULION ALVAREZ FT BANDA LA ELEMENTAL=



♩=225





Trombón 2 en Si \flat

114

A musical staff for Trombone 2 in B-flat. The staff begins with a treble clef, a key signature of one sharp (F#), and a common time signature (C). The music consists of a series of notes and rests. The first measure contains a half note G4. The second measure contains a quarter note A4, a quarter note B4, and a quarter note C5. The third measure contains a half note D5. The fourth measure contains a quarter note E5, a quarter note F#5, and a quarter note G5. The fifth measure contains a half note A5. The sixth measure contains a quarter note B5, a quarter note C6, and a quarter note D6. The seventh measure contains a half note E6. The eighth measure contains a quarter rest. The ninth measure contains a quarter note F#6, a quarter note G6, and a quarter note A6. The tenth measure contains a half note B6. The eleventh measure contains a quarter note C7, a quarter note D7, and a quarter note E7. The twelfth measure contains a half note F#7. The piece ends with a double bar line.

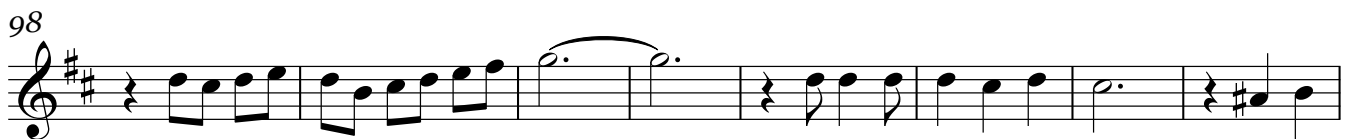
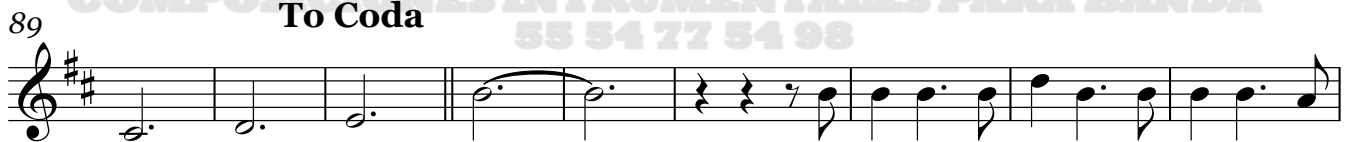
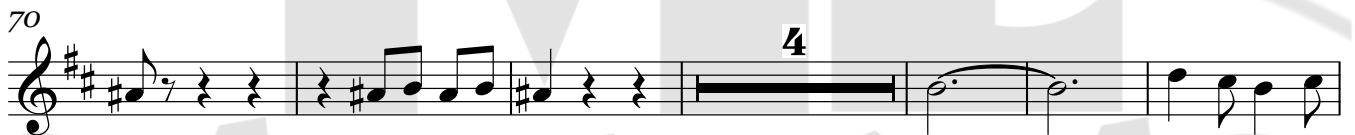
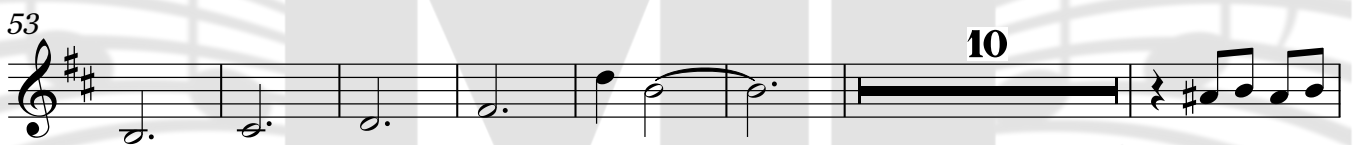
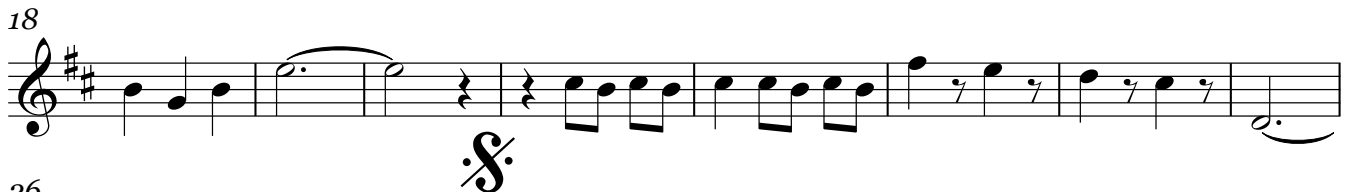
=UNA RAYA MAS AL TIGRE=

Trombón 3 en Sib

=JULION ALVAREZ FT BANDA LA ELEMENTAL=



♩=225





Trombón 3 en Sib

114



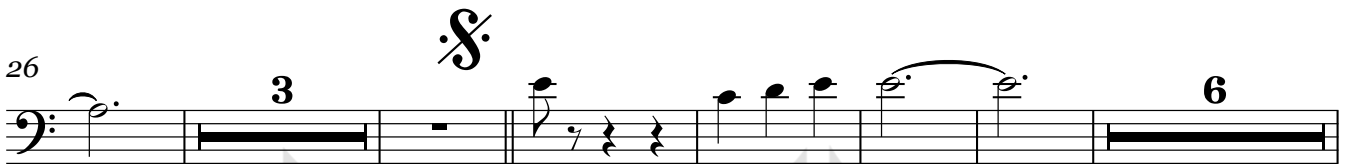
Trombón 1 en C

=UNA RAYA MAS AL TIGRE=

=JULION ALVAREZ FT BANDA LA ELEMENTAL=



♩=225



114

Trombón 1 en C

The musical score for Trombone 1 in C, measures 114-118, is written on a single staff with a bass clef. The key signature has one sharp (F#). The melody begins with a half note G2, followed by a slur over a quarter note A2 and a quarter note B2. This is followed by a quarter note C3 with a sharp sign, and a quarter note D3. A second slur covers a quarter note E3 and a quarter note F#3. The melody then continues with a quarter note G3, a quarter note A3, and a quarter note B3. The final measure contains a quarter note C4, a quarter note B3, and a quarter note A3, ending with a double bar line.

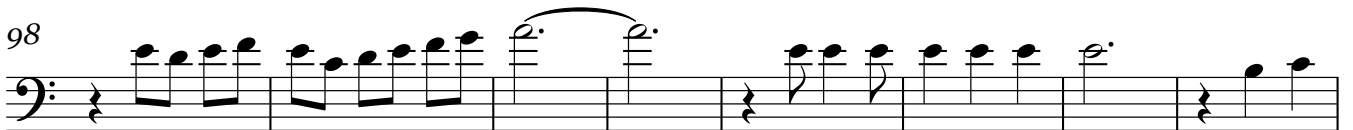
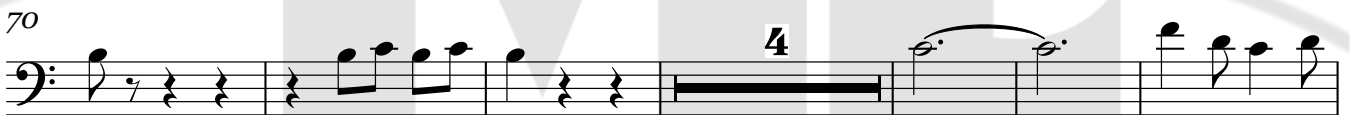
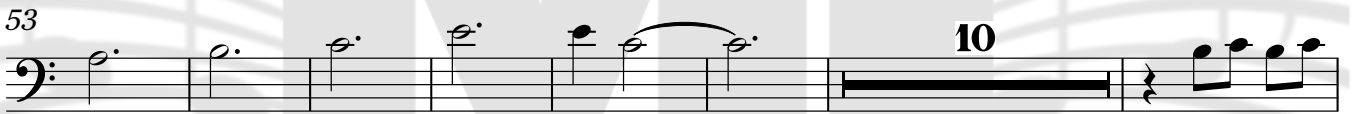
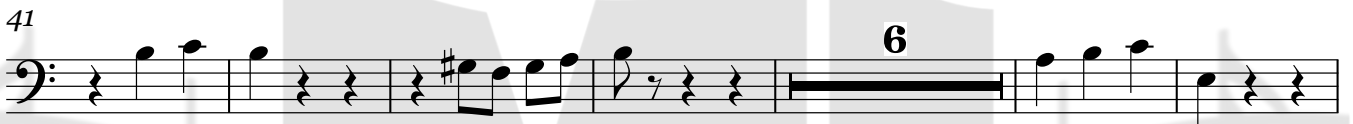
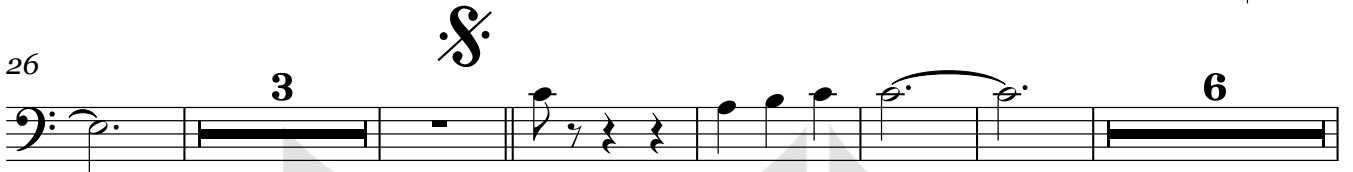
Trombón 2 en C

=UNA RAYA MAS AL TIGRE=

=JULION ALVAREZ FT BANDA LA ELEMENTAL=



♩=225



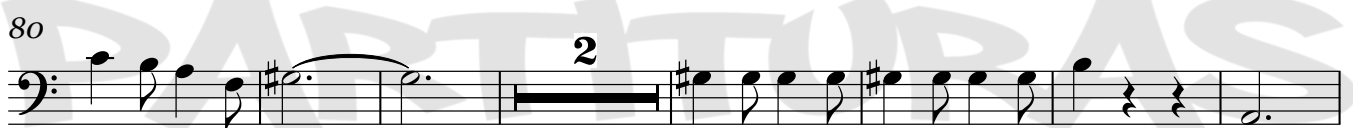
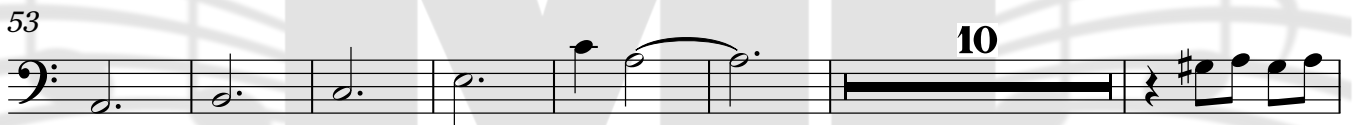
=UNA RAYA MAS AL TIGRE=

Trombón 3 en C

=JULION ALVAREZ FT BANDA LA ELEMENTAL=



♩=225





Trombón 3 en C

114



91 **To Coda**

107 **D.S. al Coda**

115

=UNA RAYA MAS AL TIGRE=

Tuba en Sib

=JULION ALVAREZ FT BANDA LA ELEMENTAL=



$\text{♩} = 225$



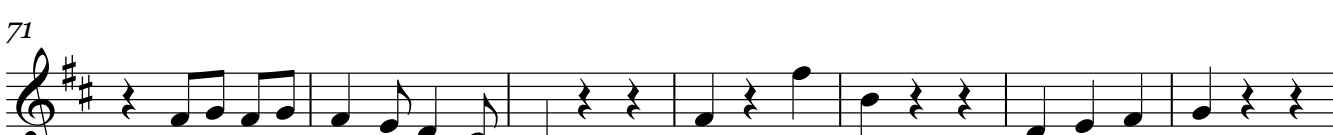
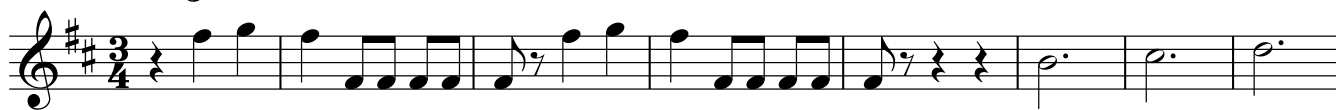
Bajo en Sib

=UNA RAYA MAS AL TIGRE=

=JULION ALVAREZ FT BANDA LA ELEMENTAL=



♩=225



78

85 **To Coda**

92

99

106

113 **D.S. al Coda**

117