

=VOLVERE=

Clarinete 1 en Sib

=BANDA JEREZ=

01/mayo/2021



♩=155

8

16

29

63

TRANSCRIPCIONES, ARREGLOS
COMPOSICIONES INSTRUMENTALES PARA BANDA
55 54 77 54 98

88

98

107

=VOLVERE=

Clarinete 2 en Sib

=BANDA JEREZ=

01/mayo/2021



♩=155

8

16

29

63

TRANSCRIPCIONES, ARREGLOS
COMPOSICIONES INSTRUMENTALES PARA BANDA
55 54 77 54 98

88

98

107

=VOLVERE=



Clarinete 3 en Sib

=BANDA JEREZ=

01/mayo/2021

$\text{♩} = 155$



TRANSCRIPCIONES, ARREGLOS
COMPOSICIONES INSTRUMENTALES PARA BANDA
55 54 77 54 98



COPYRIGHT © PARTITURAS MARCOS LOPEZ AMBROSIO
W/ 5554775498

=VOLVERE=

Trompeta 1 en Sib

=BANDA JEREZ=

01/mayo/2021



$\text{♩} = 155$



=VOLVERE=

Trompeta 2 en Sib

=BANDA JEREZ=

01/mayo/2021



$\text{♩} = 155$



D.S.

TRANSCRIPCIONES, ARREGLOS
COMPOSICIONES INSTRUMENTALES PARA BANDA
55 54 77 54 98



COPYRIGHT © PARTITURAS MARCOS LOPEZ AMBROSIO
W/ 5554775498

=VOLVERE=

Trompeta 3 en Sib

=BANDA JEREZ=

01/mayo/2021



$\text{♩} = 155$



TRANSCRIPCIONES, ARREGLOS
COMPOSICIONES INSTRUMENTALES PARA BANDA
55 54 77 54 98



COPYRIGHT © PARTITURAS MARCOS LOPEZ AMBROSIO
W/ 5554775498

=VOLVERE=

Trombón 1 en Sib

=BANDA JEREZ=

01/mayo/2021



♩=155

9

16

25 9 9

50 17

74

84 D.S. 55 54 77 54 98

93 2

104

110 3

=VOLVERE=

Trombón 2 en Sib

=BANDA JEREZ=

01/mayo/2021



♩=155

9

16

25 9

50 17

74

84 D.S. 55 54 77 54 98

93 2

104

110 3

=VOLVERE=

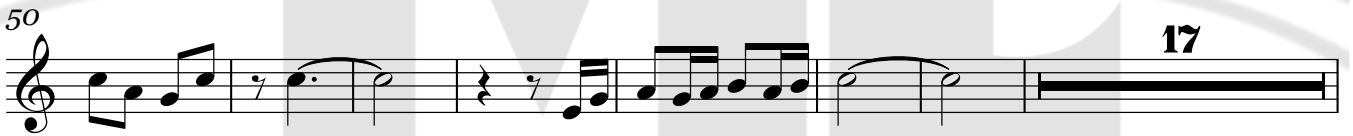
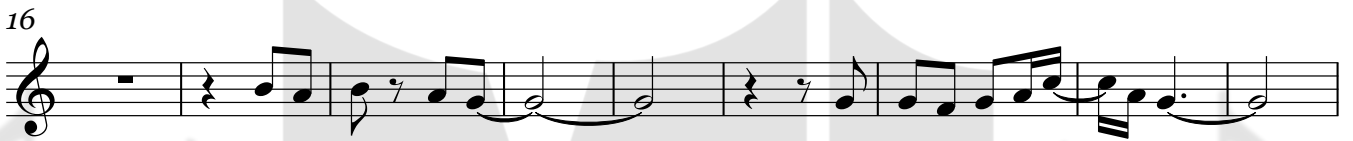
Trombón 3 en Sib

=BANDA JEREZ=

01/mayo/2021



$\text{♩} = 155$



TRANSCRIPCIONES, ARREGLOS
COMPOSICIONES INSTRUMENTALES PARA BANDA
55 54 77 54 98

D.S.



=VOLVERE=

Trombón 1 en C

=BANDA JEREZ=

01/mayo/2021



♩=155

9

16

25

9

41

9

57

17

79

D.S.

88

2

98

107

3

=VOLVERE=

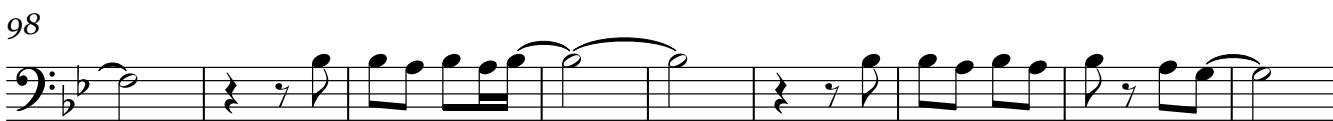
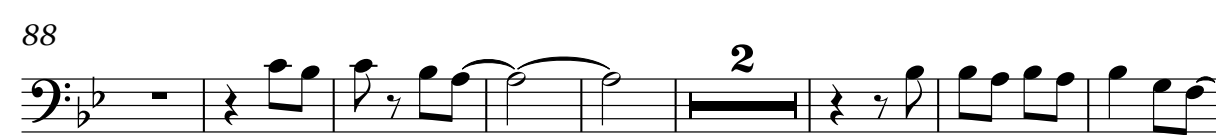
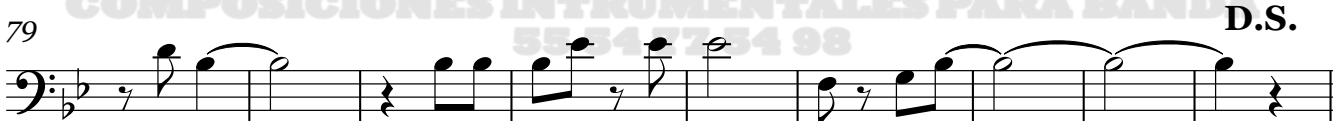
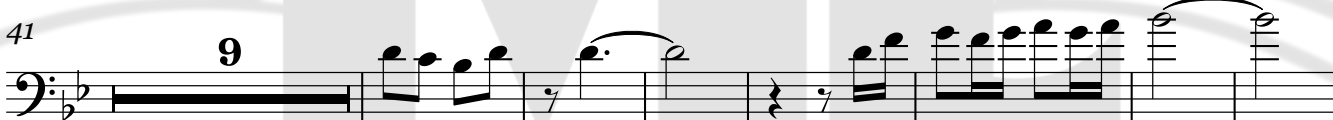
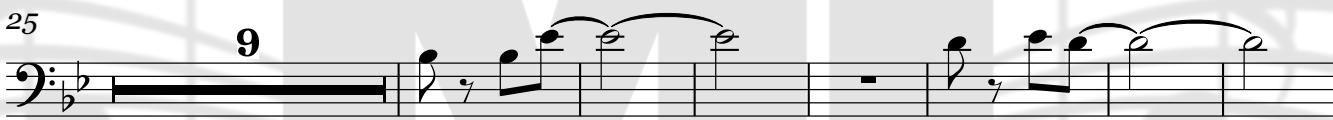
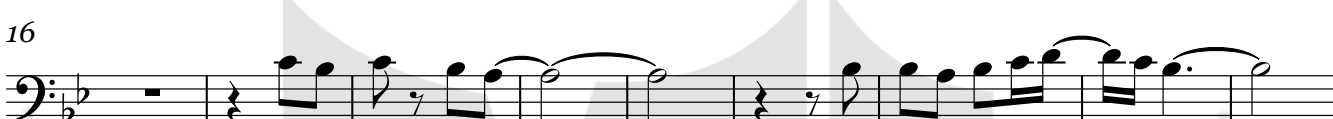
Trombón 2 en C

=BANDA JEREZ=

01/mayo/2021



♩=155



=VOLVERE=

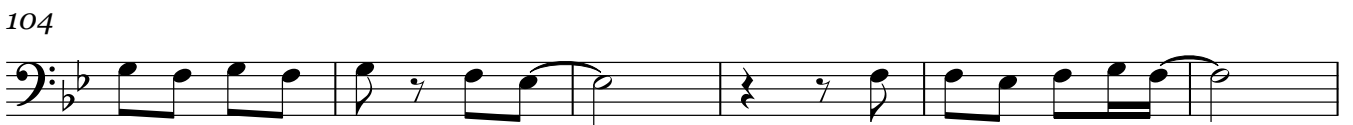
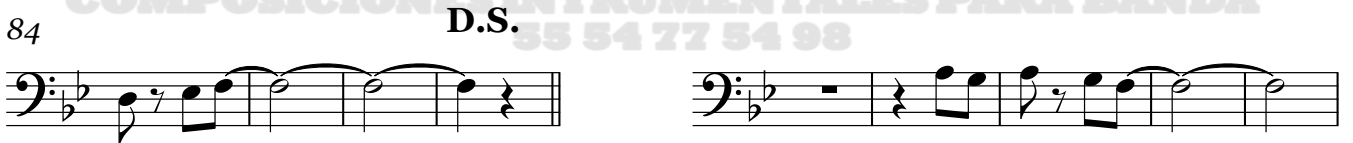
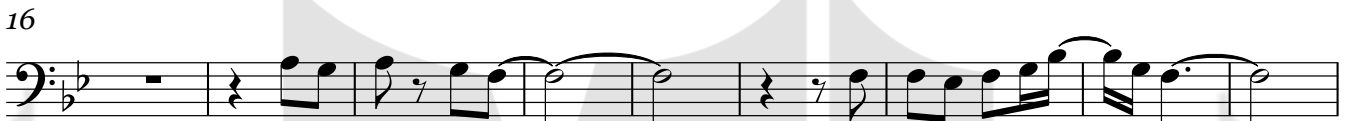
Trombón 3 en C

=BANDA JEREZ=

01/mayo/2021



♩=155



=VOLVERE=

Tuba en Sib

=BANDA JEREZ=

01/mayo/2021



$\text{♩} = 155$



Tuba en Sib

86 **D.S.**

Measures 86-88: Bass clef, starting with a sixteenth-note triplet (G4, A4, B4) followed by a quarter note (C5) and a quarter rest.

Measures 89-91: Bass clef, starting with a quarter note (G3), followed by quarter notes (A3, B3), and quarter rests.

Measures 92-98: Bass clef, starting with a sixteenth-note triplet (G4, A4, B4) followed by quarter notes (C5, D5), quarter rests, and quarter notes (E5, F5).

Measures 99-106: Bass clef, starting with quarter notes (G3, A3), quarter rests, quarter notes (B3, C4), quarter rests, quarter notes (D4, E4), quarter rests, quarter notes (F4, G4), quarter rests, quarter notes (A4, B4), quarter rests, quarter notes (C5, D5), quarter rests, quarter notes (E5, F5), quarter rests, quarter notes (G5, A5), quarter rests, quarter notes (B5, C6), quarter rests.

Measures 107-111: Bass clef, starting with quarter notes (G3, A3), quarter rests, quarter notes (B3, C4), quarter rests, quarter notes (D4, E4), quarter rests, quarter notes (F4, G4), quarter rests, quarter notes (A4, B4), quarter rests, quarter notes (C5, D5), quarter rests, quarter notes (E5, F5), quarter rests, quarter notes (G5, A5), quarter rests, quarter notes (B5, C6), quarter rests.

Measures 112-116: Bass clef, starting with quarter notes (G3, A3), quarter rests, quarter notes (B3, C4), quarter rests, quarter notes (D4, E4), quarter rests, quarter notes (F4, G4), quarter rests, quarter notes (A4, B4), quarter rests, quarter notes (C5, D5), quarter rests, quarter notes (E5, F5), quarter rests, quarter notes (G5, A5), quarter rests, quarter notes (B5, C6), quarter rests.

Bajo en Sib

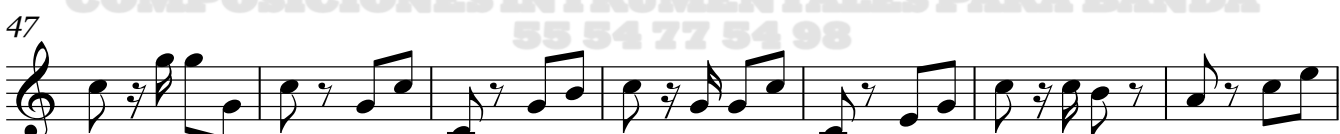
=VOLVERE=

=BANDA JEREZ=



01/mayo/2021

$\text{♩} = 155$



78



86 **D.S.**



92



100



108



113

