

((**y Te Vas**))

Clarinete 1

Carnaval

Trans: paço Chavez
pacomaldini3@hotmail.com

Cel: 395 102 6706

3 = 155

7

14 *Voz*

22 8

39 **A** 4

49 3

58 4 2

70 **B**

79 18

103 *To Coda* 7

117

126 *D.S. al Coda* 3

135

((^xy Te Vas^x))

Clarinete 2

Carnaval

Trans: pako Chavez
pacomaldini3@hotmail.com

Cel: 395 102 6706

14 $\text{♩} = 155$
3 3 7

22

31 8 A 8

50 3 3

58 7 2

71 B 25

103 To Coda 7

116

122 D.S. al Coda

130 3

138

((^xy Te Vas^x))

Clarinete 3

Carnaval

Trans: paço Chavez
pacomaldini3@hotmail.com

Cel: 395 102 6706

13 $\text{♩} = 155$

21 *Voz*

31 **A**

50 **3**

58 **7** **2**

71 **B** **25**

103 *To Coda* **7**

116 *D.S. al Coda*

122

130 **3**

138

Trombón 1 síb

((**y Te Vas**))

Carnaval

Trans: paço Chavez
pacomaldini3@hotmail.com

Cel: 395 102 6706

$\text{♩} = 155$

10

19 *Voz* 9

35 **A** 15 3

55 11

71 **B** 11

90 3

101 *To Coda* 5

114

122 *D.S. al Coda*

130 4

138

((**y Te Vas**))

Trombón 2 sib

Carnaval

Trans: paño Chavez
pacomaldini3@hotmail.com

Cel: 395 102 6706

♩ = 155

8

15 *Voz*

22 9

37 **A** 15 **S**

58 **B** 11

76 11 3

96 5 *To Coda*

107 7

120

128 **D.S. al Coda**

134 4

((**y Te Vas**))

Trombón 3 sib

Carnaval

Trans: paço Chavez
pacomaldini3@hotmail.com

Cel: 395 102 6706

♩ = 155

8

15

21 *Voz* 9

36 **A** 15

58 **B** 11

76 11 3

96 *To Coda* 5

107 7

120

128 *D.S. al Coda*

134 4

((**y Te Vas**))

Τρομπόν 1

Carnaval

Trans: paço Chavez
pacomaldini3@hotmail.com

Cell: 395 102 6706

♩ = 155

10

19

Voz

9

35

A

15

3

55

11

71

B

11

90

3

101

5

To Coda

114

122

D.S. al Coda

130

4

138

((**y Te Vas**))

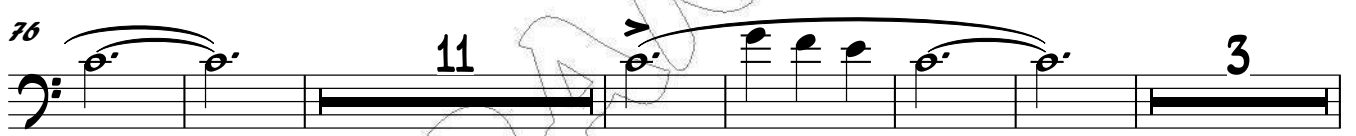
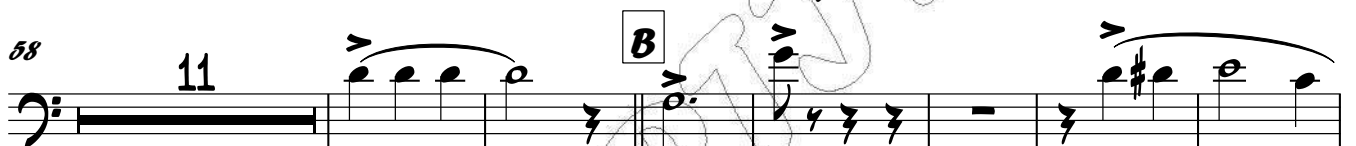
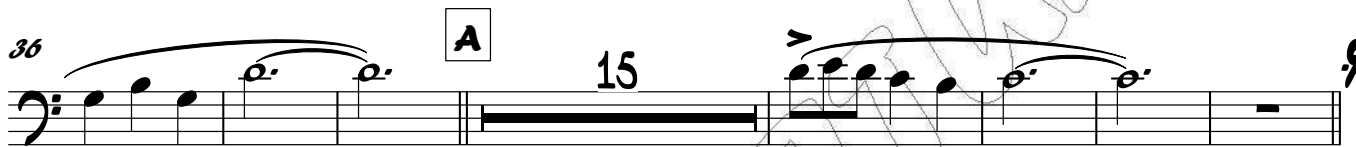
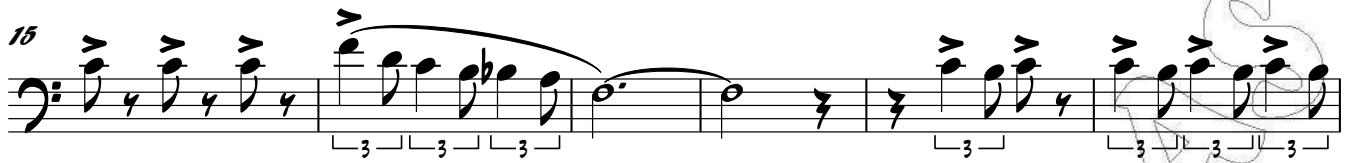
Тромбон 2

Carnaval

Trans: pako Chavez
pacomaldini3@hotmail.com

Cel: 395 102 6706

♩ = 155



((**y Te Vas**))

Тромбон 3

Carnaval

Trans: paço Chavez
pacomaldini3@hotmail.com

Cel: 395 102 6706

♩ = 155 9

16 Voz

22 9

37 A 15 \$

58 B 11

76 11 3

96 5 To Coda

107 7

120

128 D.S. al Coda ⊕

134 4

((**y Te Vas**))

Trompeta 1

Carnaval

Trans: paço Chavez
pacomaldini3@hotmail.com

Cel: 395 102 6706

♩ = 155

8

15 Voz

22 A 17 8

51 3

58 4

70 B

78 6 17

106 To Coda 7

119

127 D.S. al Coda 7

138

((**y Te Vas**))

Trompeta 2

Carnaval

Trans: paço Chavez
pacomaldini3@hotmail.com
Cel: 395 102 6706

$\text{♩} = 155$

8

15 *Voz*

22 **A** 17 12

54 3 8

61 4

71 **B** 6

84 17 *To Coda*

107 7

120

128 *D.S. al Coda* 7

138

((**y Te Vas**))

Trompeta 3

Carnaval

Trans: paço Chavez
pacomaldini3@hotmail.com

Cel: 395 102 6706

$\text{♩} = 155$

8

15 *Voz*

22 **A** 17 12

52 3

58 4

70 **B**

78 6 17

106 *To Coda* 7

119

127 *D.S. al Coda* 7

138

((**y Te Vas**))

Saxores Eb

Carnaval

Trans: paço Chavez
pacomaldini3@hotmail.com

Cel: 395 102 6706

♩ = 155

2 A F#m

10 D Bm C#m D

17 Dm A Voz

22 F#m

29 D Bm E

37 A A

43 F#m D

49 Bm E F#m

57 C#m D

64 Bm E D E

2

Saxores Eb

71 **B** 4 F#m

79 D Bm E

84 A

89 F#m

94 D Bm

99 E D

105 G To Coda A 2

112 F#m D Bm C#m D

120 Dm A 2 F#m

128 D.S. al Coda A

133 D G

Saxores Eb

3

138

A

2

Musical notation for Saxophones Eb, measures 138-140. The notation is in treble clef with a key signature of three sharps (F#, C#, G#). Measure 138 contains a quarter rest followed by a quarter note chord (F#, C#, G#). Measure 139 contains a quarter note chord (F#, C#, G#), a quarter rest, a quarter note chord (F#, C#, G#), and a quarter rest. Measure 140 contains a quarter note chord (F#, C#, G#), a quarter rest, a quarter note chord (F#, C#, G#), and a quarter rest. A double bar line is present at the end of measure 140. A large number '2' is written above the staff in measure 140, indicating a second ending.

((**y Te Vas**))

Tuba

Carnaval

Trans: paço Chavez
pacomaldini3@hotmail.com
Cel: 395 102 6706

♩ = 155

3 3 3

8 Bm G Em F#m

15 G Gm D Voz

22 Bm

30 G Em A

38 A D Bm

46 G Em A

53 Bm

58 F#m G

65 Em A G A

