

LOS PILARES DE LA CARCEL

CANCION
V. ELIZALDE

CLARINETE 1

7

23

10

15

8

13

Coda

4

D.S. al Coda

Coda

LOS PILARES DE LA CARCEL

CANCION
V. ELIZALDE

TUBA

Musical notation for Tuba, first staff. It begins with a treble clef, a key signature of one flat (B-flat), and a 3/4 time signature. The music starts with a fermata over a whole note B-flat, followed by a series of eighth and quarter notes.

Musical notation for Tuba, second staff. Continuation of the melody with eighth and quarter notes.

Musical notation for Tuba, third staff. Continuation of the melody with eighth and quarter notes.

Musical notation for Tuba, fourth staff. Continuation of the melody with eighth and quarter notes.

Musical notation for Tuba, fifth staff. Continuation of the melody with eighth and quarter notes.

Musical notation for Tuba, sixth staff. Continuation of the melody with eighth and quarter notes.

Musical notation for Tuba, seventh staff. Continuation of the melody with eighth and quarter notes.

Musical notation for Tuba, eighth staff. Continuation of the melody with eighth and quarter notes.

2.

Musical notation for Tuba, ninth staff. Continuation of the melody with eighth and quarter notes.

⊕ Coda

Musical notation for Tuba, tenth staff. Continuation of the melody with eighth and quarter notes, ending with a coda symbol.

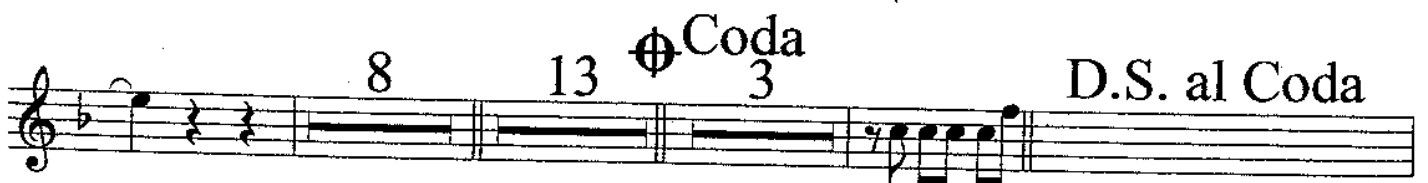
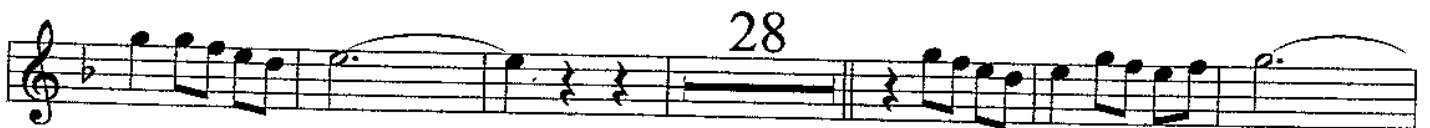
D.S. al Coda ⊕ Coda

Musical notation for Tuba, eleventh staff. Continuation of the melody with eighth and quarter notes, ending with a coda symbol.

LOS PILARES DE LA CARCEL

CANCION
V. ELIZALDE

TROMPETA 1

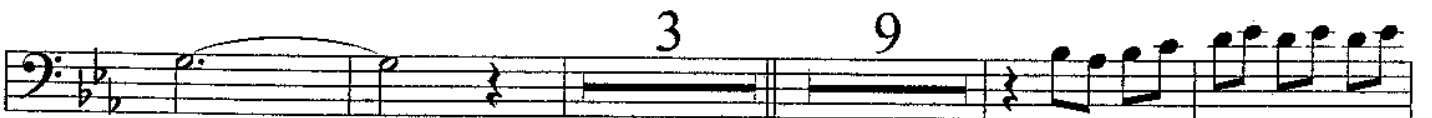
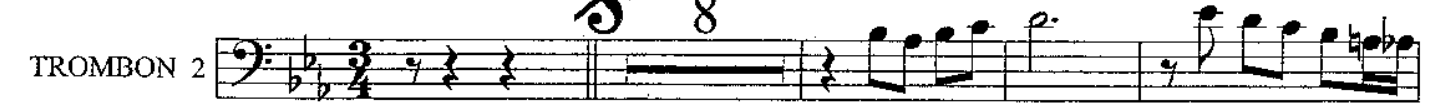


LOS PILARES DE LA CARCEL

CANCION
V. ELIZALDE

TROMBON 2

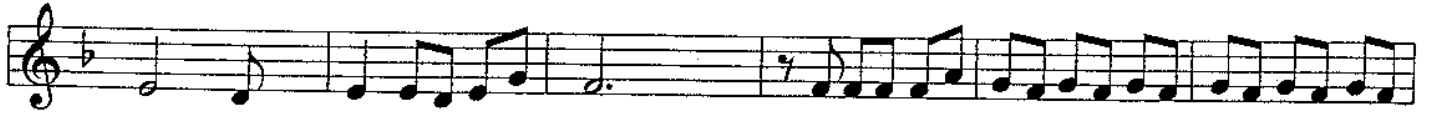
S 8



LOS PILARES DE LA CARCEL

CANCION
V. ELIZALDE

TROMPETA 3



LOS PILARES DE LA CARCEL

CANCION
V. ELIZALDE

TROMBON 1



8

11

14

3

9

2

14

6

3

⊕ Coda

4

D.S. al Coda

⊕ Coda

LOS PILARES DE LA CARCEL

CANCION
V. ELIZALDE

SAXORES



The musical score for Saxophones is written in 3/4 time and consists of ten staves. The notation includes various chordal textures, rests, and dynamic markings. The first staff begins with a treble clef and a 3/4 time signature. The music is primarily composed of chords and rests, with some melodic lines in the later staves. The score concludes with a Coda section, marked with a circled cross symbol (⊕) and the word "Coda".

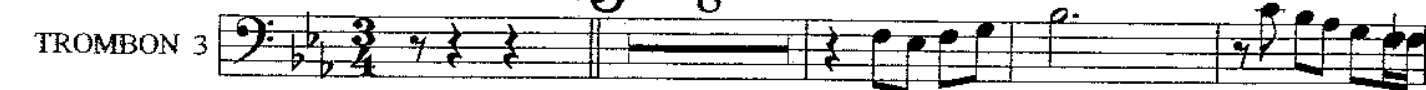
D.S. al Coda ⊕ Coda

LOS PILARES DE LA CARCEL

CANCION
V. ELIZALDE

TROMBON 3

 8



LOS PILARES DE LA CARCEL

CANCION
V. ELIZALDE

TROMPETA 2

The musical score for Trompa 2 consists of seven staves of music. The first staff begins with a treble clef, a key signature of one flat (B-flat), and a 3/4 time signature. A double bar line with a repeat sign is placed after the first measure. The second staff continues the melody. The third staff includes a measure number '5' above a measure with a fermata. The fourth staff includes a measure number '28' above a measure with a fermata. The fifth staff includes a measure number '10' above a measure with a fermata. The sixth staff includes measure numbers '8' and '13' above measures with fermatas, followed by a Coda symbol (a circle with a cross) and the number '3' below it. The instruction 'D.S. al Coda' is written above the staff. The seventh staff begins with a Coda symbol and the word 'Coda' above it, followed by the concluding musical notation.

LOS PILARES DE LA CARCEL

CANCION
V. ELIZALDE

CLARINETE 3

7

23 10

15 8

13 Coda 4 D.S. al Coda

Coda