

El Errante

1 Clarinete en Sib

Valentín Elizalde

♩=132

9

18 **20** **13**

54 **11**

68 ♩=200 **29** ♩=132

103

111 **20**

138 **13** **10**

164

El Errante

2 Clarinete en Sib

Valentín Elizalde

♩=132

9

18 **20** **13**

54 **11**

68 ♩=200 **29** ♩=132

103

112 **20**

138 **13** **10**

164

El Errante

3 Clarinete en Sib

Valentín Elizalde

$\text{♩} = 132$

9

18 **20** **13**

55 **11** $\text{♩} = 200$ **29**

97 $\text{♩} = 132$

106

115 **20** **13**

152 **10**

165

El Errante

1 Trompeta en Sib

Valentín Elizalde

♩=132

9

18 **8** **22**

51 **5** *trill* **7** $\frac{3}{4}$

68 ♩=200 **14**

88

96 ♩=132

104

112 **8**

125 **22** **5**

2

1 Trompeta en Si \flat

155

tr

6

165

El Errante

2 Trompeta en Sib

Valentín Elizalde

♩=132

9

18 **8** **22**

51 **5** *trm* **7**

68 **14** ♩=200

88

96 ♩=132

104

112 **8**

125 **22** **5**

2

2 Trompeta en Sib

155

tr **6**

165

El Errante

3 Trompeta en Sib

Valentín Elizalde

♩=132

9

18 **8** **22**

51 **5** *trill* **7** $\frac{3}{4}$

68 ♩=200 **14**

88

96 ♩=132

105

114 **8** **22**

147 **5**

2

3 Trompeta en Sib

155

Musical staff for Trompeta en Sib, measures 155-164. The staff is in a key signature of two flats (B-flat and E-flat) and a common time signature. It begins with a treble clef. The notation includes eighth and quarter notes, a trill marking (*tr*) over a quarter note, and a six-measure rest indicated by a thick black bar and the number **6**. The staff concludes with a quarter note and a quarter rest.

165

Musical staff for Trompeta en Sib, measures 165-174. The staff continues in the same key signature and time signature. It features a variety of rhythmic patterns, including eighth notes, quarter notes, and quarter rests. The staff ends with a double bar line.

El Errante

1 Trombón en C

Valentín Elizalde

♩=132

9

18 14 2

38 3 23

♩=200

68

76 15

97 ♩=132

105

113 14

133 2 3 23

2

1 Trombón en C

164

Musical notation for Trombone 1, starting at measure 164. The notation is written on a single staff with a bass clef and a key signature of two flats (B-flat and E-flat). The music consists of a series of eighth and sixteenth notes, with some rests and a final measure containing a whole note. The piece concludes with a double bar line.

El Errante

2 Trombón en C

Valentín Elizalde

$\text{♩} = 132$

9

18 14

36 6 23

$\text{♩} = 200$

68

76 15

97 $\text{♩} = 132$

105

113 14

133 6 23

2

2 Trombón en C

164

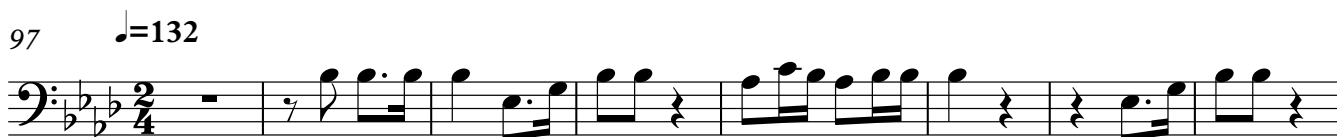
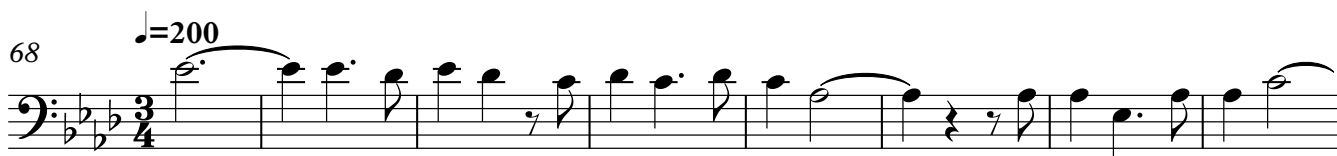
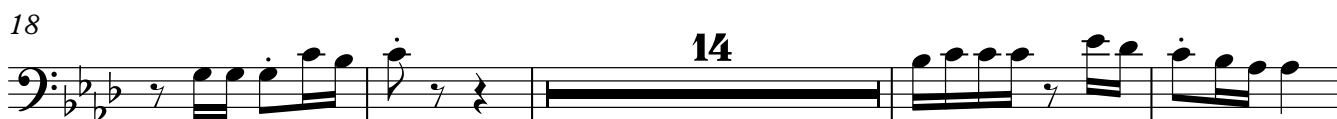


El Errante

3 Trombón en C

Valentín Elizalde

♩=132



2

3 Trombón en C

164

