

Altos Eb

COMANDO X

Alfredito Olivas

8

15

22

30

38

45

53

55

D.S. al Coda

Go Coda

Tuba

COMANDO X

Alfredo Olivas

3 3 3

7

15

22 3 3 3

29

37

45 1, 2. 3 3 3

51 3 3 3 *To Coda* *D.S. al Coda* 55 *Coda*

57

Vocals

COMANDO X

Alfredo Olivas

24

29

35

41

47

53

D.S. al Coda

55

Coda

Clarinete Bb 1

COMANDO X

Alfredo Olivas

6

12

18

24

29

35

52

55

3. To Coda

D.S. al Coda

Coda

5

3

1, 2. 6

Clarinete Bb 2

COMANDO X

Alfredo Olivas

6

12

18

24

29

35

52

55

To Coda *D.S. al Coda* *Coda*

5 3 1,2. 6

Clarinete Bb 3

COMANDO X

Alfredo Olivas

6

12

18

24

29

35

52

55

To Coda

D.S. al Coda

Coda

3. 2

5 3 1, 2. 6

Trompeta Bb 1

COMANDO X

Alfredito Olivas



6

12

18

24

17

46

1, 2. 6

3. To Coda

D.S. al Coda 2

55

Coda

58

Trompeta Bb 2

COMANDO X

Alfredito Olivas



6

12

18

24

46

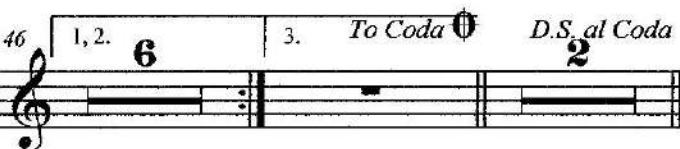
55

58

Trompeta Bb 3

COMANDO X

Alfredo Olivas



Trombòn 1

COMANDO X

Alfredo Olivas

6

12

18

24

19

2

48

52

3. To Coda Coda D.S. al Coda 2

55

Coda

Trombòn 1

COMANDO X

Alfredo Olivas

8

6

12

18

24

19

1, 2

2

49

3. To Coda C D.S. al Coda C

55

Coda C

56

Trombòn 2

COMANDO X

Alfredo Olivas

6

12

18

24

19

1, 2. 2

48

52

3. To Coda D.S. al Coda

55

Coda

Trombòn 2

COMANDO X

Alfredo Olivas

8

6

12

18

24

19

1. 2. 2

49

3. *To Coda* *D.S. al Coda* 2

55

Coda

56

Trombón 3

COMANDO X

Alfredo Olivas



Musical staff 1, starting at measure 8. It begins with a whole rest, followed by a series of notes: a half note G4, a quarter note A4, a quarter note B4, a dotted half note C5, a quarter note B4, a quarter note A4, and a quarter note G4.

Musical staff 2, starting at measure 6. It begins with a half note G4, a quarter note A4, a quarter note B4, a dotted half note C5, a quarter note B4, a quarter note A4, a quarter note G4, a quarter note F4, a quarter note E4, a quarter note D4, a quarter note C4, a quarter note B3, and a quarter note A3.

Musical staff 3, starting at measure 12. It begins with a half note G4, a quarter note A4, a quarter note B4, a dotted half note C5, a quarter note B4, a quarter note A4, a quarter note G4, a quarter note F4, a quarter note E4, a quarter note D4, a quarter note C4, a quarter note B3, and a quarter note A3.

Musical staff 4, starting at measure 18. It begins with a half note G4, a quarter note A4, a quarter note B4, a dotted half note C5, a quarter note B4, a quarter note A4, a quarter note G4, a quarter note F4, a quarter note E4, a quarter note D4, a quarter note C4, a quarter note B3, and a quarter note A3.

Musical staff 5, starting at measure 24. It begins with a half note G4, a quarter note A4, a quarter note B4, a dotted half note C5, a quarter note B4, a quarter note A4, a quarter note G4, a quarter note F4, a quarter note E4, a quarter note D4, a quarter note C4, a quarter note B3, and a quarter note A3. It includes first and second endings (1, 2) and a double bar line.

Musical staff 6, starting at measure 49. It includes a triple repeat sign, a first ending, and a second ending. The first ending is marked "3. To Coda" and the second ending is marked "D.S. al Coda". It includes a double bar line and a Coda symbol.

Musical staff 7, starting at measure 56. It begins with a double bar line, followed by a half note G4, a quarter note A4, a quarter note B4, a dotted half note C5, a quarter note B4, a quarter note A4, a quarter note G4, a quarter note F4, a quarter note E4, a quarter note D4, a quarter note C4, a quarter note B3, and a quarter note A3.