

((^{*}^{*}Costumbres^{*}^{*}))

Clarinete 2

Banda El Recodo

Trans: paço Chavez
pacomaldini3@hotmail.com

Cel: 395 102 6706

♩ = 112

7

15

10

30

8

3

44

To Coda

4

52

D.S. al Coda

56

15

((^{*}^{*}Costumbres^{*}^{*}))

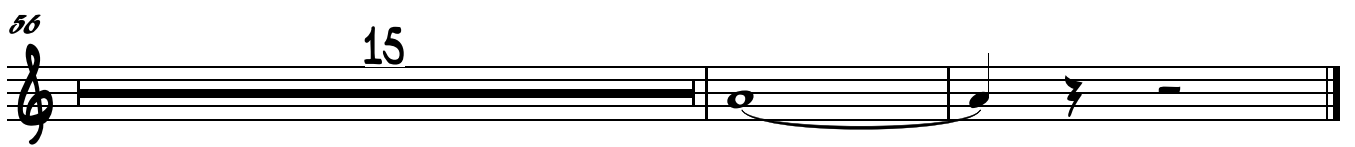
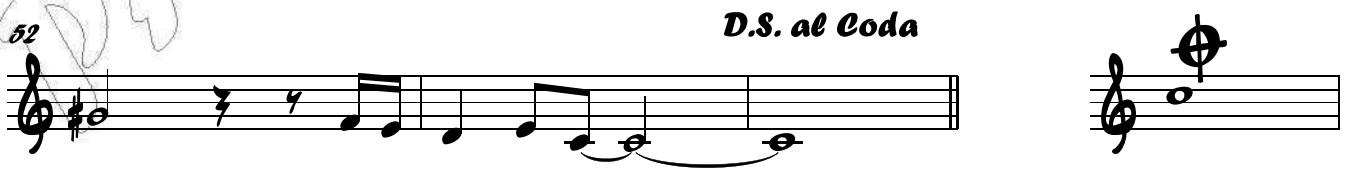
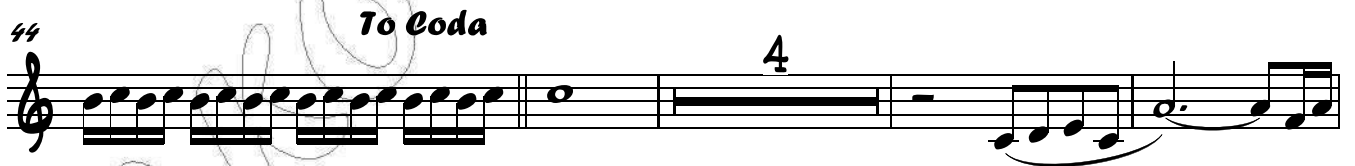
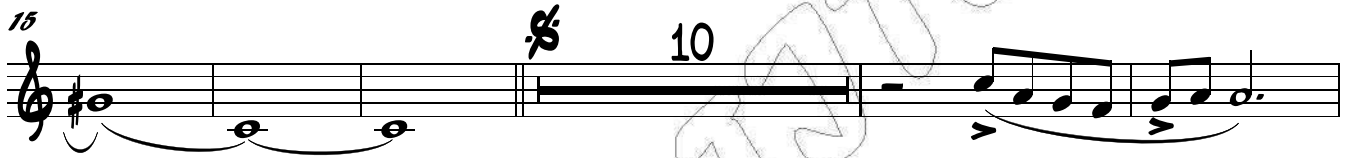
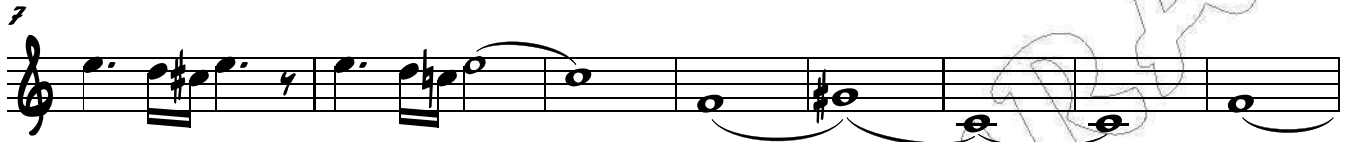
Clarinete 3

Banda El Recodo

Trans: paço Chavez
pacomaldini3@hotmail.com

Cel: 395 102 6706

♩ = 112



((**Costumbres**))

Trombón 1

Banda El Recodo

Trans: paño Chavez
pacomaldini3@hotmail.com
Cel: 395 102 6706

$\text{♩} = 112$

7

2 DUO

16 DUO

2

24 6 11 To Coda

45 4

53 D.S. al Coda 3

58

63

68

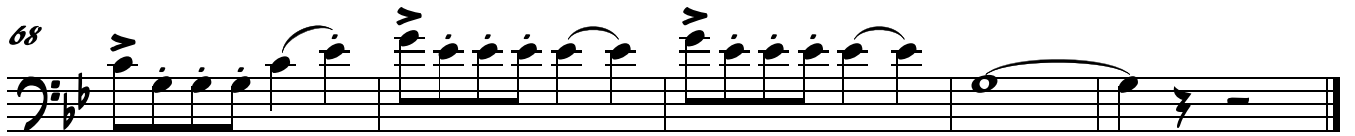
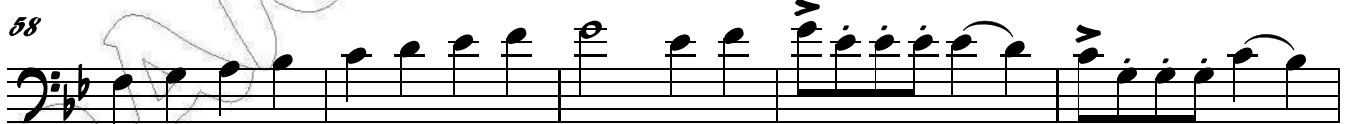
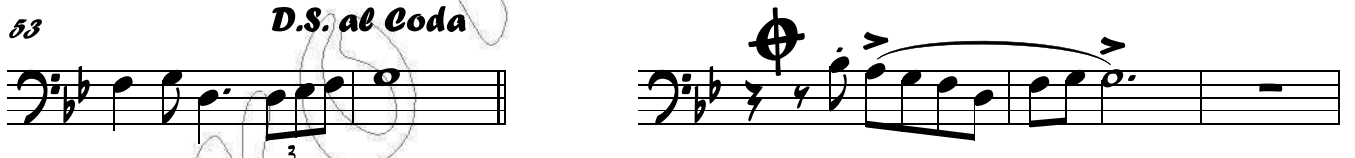
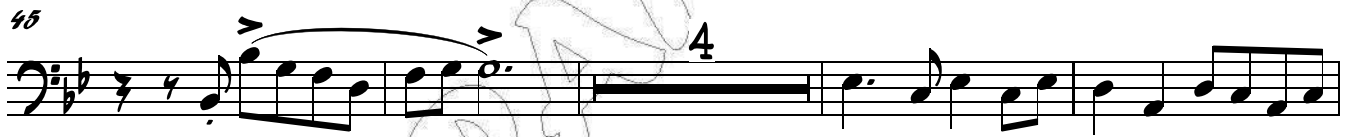
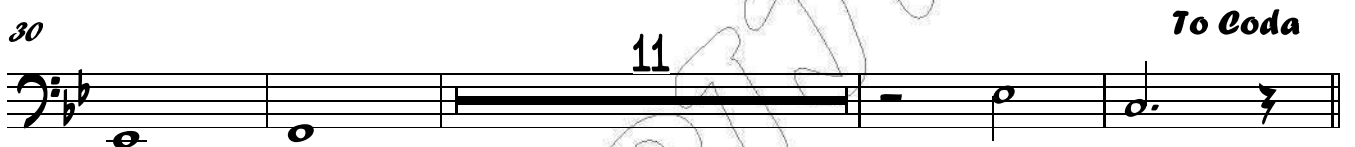
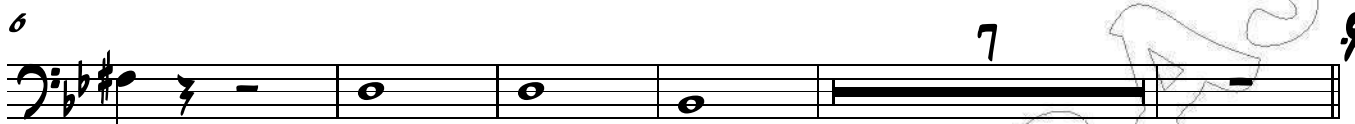
((^{*}Costumbres^{*}))

Trombón 3

Banda El Recodo

Trans: paço Chavez
pacomaldini3@hotmail.com
Cel: 395 102 6706

♩ = 112



((**Costumbres**))

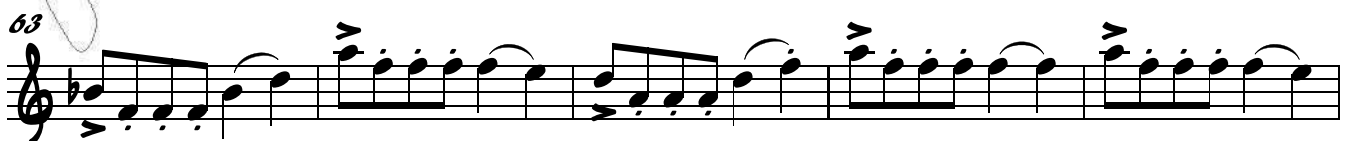
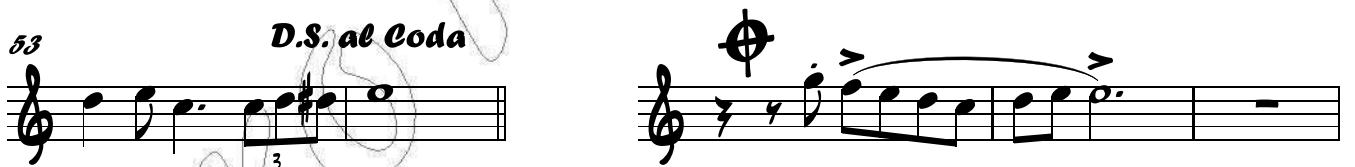
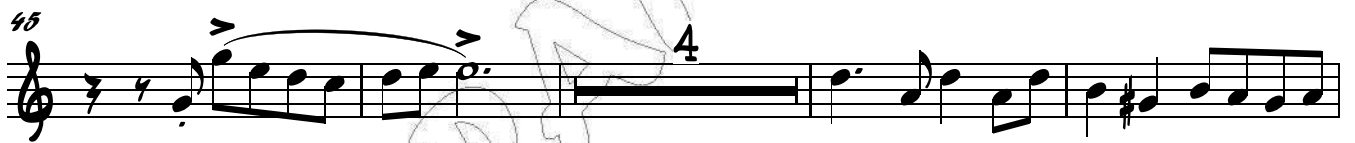
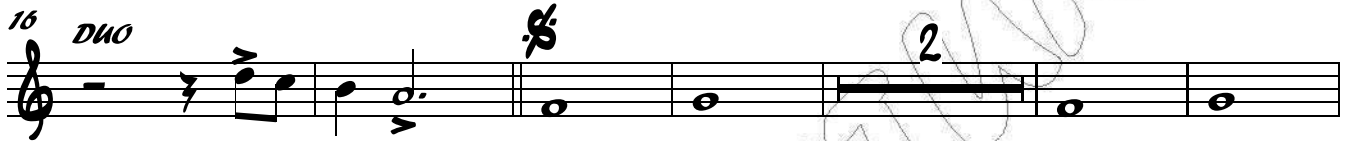
Trombón 1 si \flat

Banda El Recodo

Trans: pa \tilde{c} o Chavez
pacomaldini3@hotmail.com

Cel: 395 102 6706

$\text{♩} = 112$



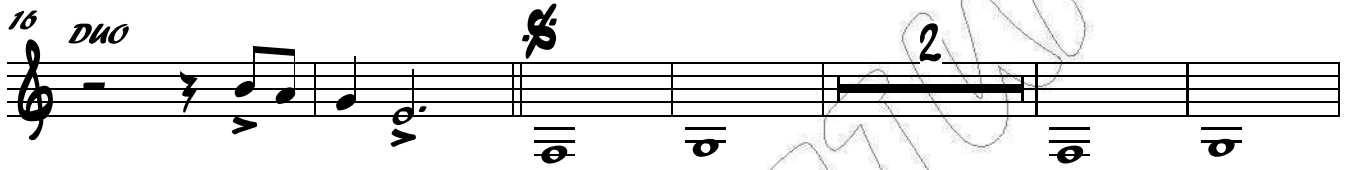
((**Costumbres**))

Trombón 2 sib

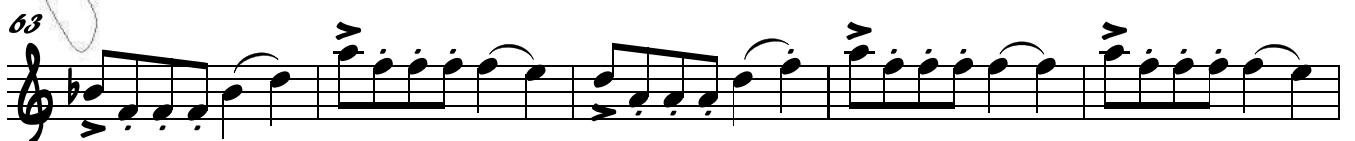
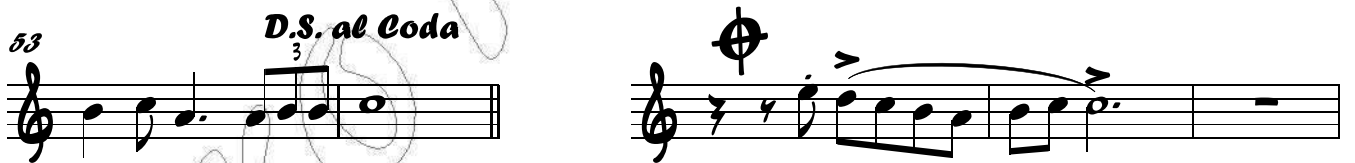
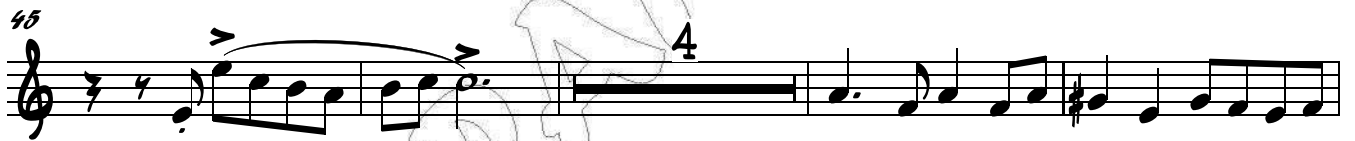
Banda El Recodo

Trans: paço Chavez
pacomaldini3@hotmail.com
Cel: 395 102 6706

♩ = 112



To Coda



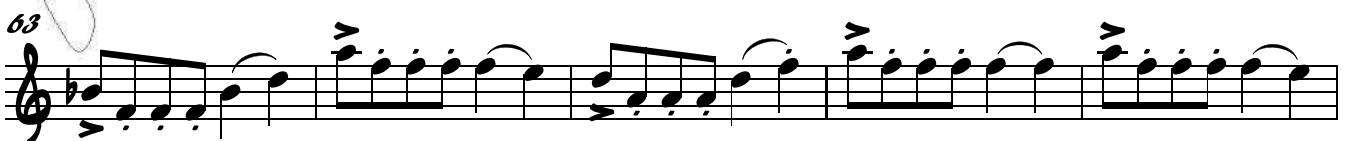
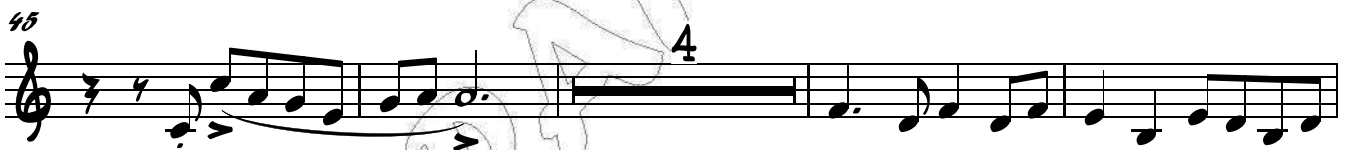
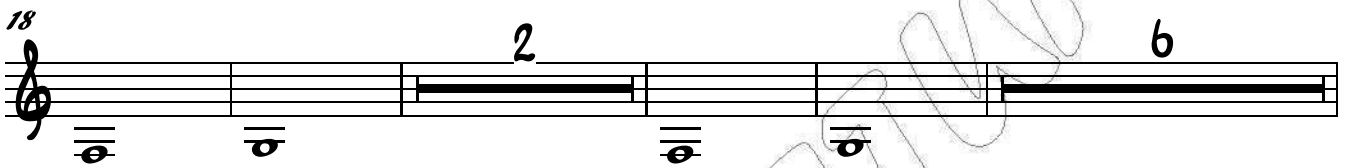
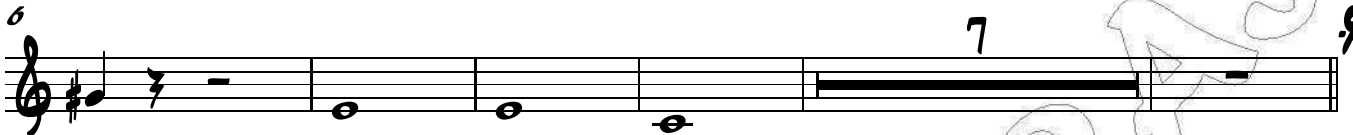
((^{*}Costumbres^{*}))

Trombón 3 sib

Banda El Recodo

Trans: paño Chavez
pacomaldini3@hotmail.com
Cel: 395 102 6706

♩ = 112



Trompeta 1

((**** Costumbres ****))

Banda El Recodo

Trans: paço Chavez
pacomaldini3@hotmail.com

Cel: 395 102 6706

♩ = 112

To Coda

D.S. al Coda

Trompeta 2

((**Costumbres**))

Banda El Recodo

Trans: paño Chavez
pacomaldini3@hotmail.com
Cel: 395 102 6706

♩ = 112



Trompeta 3

((**** Costumbres ****))

Banda El Recodo

Trans: paço Chavez
pacomaldini3@hotmail.com
Cel: 395 102 6706

♩ = 112

Musical score for Trompeta 3, featuring a watermark "PAÇO PARTITURAS". The score is written in treble clef with a common time signature (C). It consists of eight staves of music. The first staff begins with a tempo marking of ♩ = 112. The score includes various musical notations such as rests, eighth notes, quarter notes, and slurs. Measure numbers 7, 18, 26, 37, 45, 55, 62, and 67 are indicated at the start of their respective staves. Performance instructions include "To Coda" at measure 37 and "D.S. al Coda" at measure 45. Fingerings are indicated by numbers 2 and 5 above notes. The score concludes with a final measure at measure 67.

((^{**}Costumbres^{**}))

Saxores Eb

Banda El Recodo

Trans: pafo Chavez
pacomaldini3@hotmail.com
Cel: 395 102 6706

$\text{♩} = 112$

2

7

13

18

23

29

34

39

44 *To Coda*

49

54 *D.S. al Coda*

58

64

68

The image shows a musical score for Saxophones Eb. It consists of 13 staves of music. The key signature is one sharp (F#) and the time signature is common time (C). The tempo is marked as quarter note = 112. The score begins with a first ending bracket over the first two staves. The music is primarily composed of chords, with some melodic lines. There are several repeat signs (double bar lines with dots) throughout the piece. A 'To Coda' section begins at measure 44, and a 'D.S. al Coda' section begins at measure 54. The score ends with a final measure on the 13th staff.

((^xCostumbres^x))

Tuba

Banda El Recodo

Trans: pafo Chavez
pacomaldini3@hotmail.com

E Cel: 395 102 6706

♩ = 112

7 F Dm Bb

13 A Am Dm E Am

18 Dm E Am

23 Dm G C Am Dm

28 G C Am Dm G

33 C Am Dm G C

38 Am Dm G C Am Dm

43 G C Am Dm

48 E Am Dm E

53 Am

To Coda

D.S. al Coda

57 Dm G F

62 Dm Bb F Dm Bb

67 F Dm Bb F