

Culpable o No

CLARINETE 2DO.

Arturo Jaimes y los Cantantes
F.T. Edwin Luna y la Trakalosa de Monterrey

Melvin Yapan

$\text{♩} = 87$

ENTRA TABLAS

PIANO Y BATO

7

11

15

30 VOZ EDWIN

38 VOZ

54 VOZ

70 VOZ

87 VOZ EDWIN

110 VOZ EDWIN

126

130

Culpable o No

CLARINETE 3RO.

Arturo Jaimes y los Cantantes
F.T. Edwin Luna y la Trakalosa de Monterrey

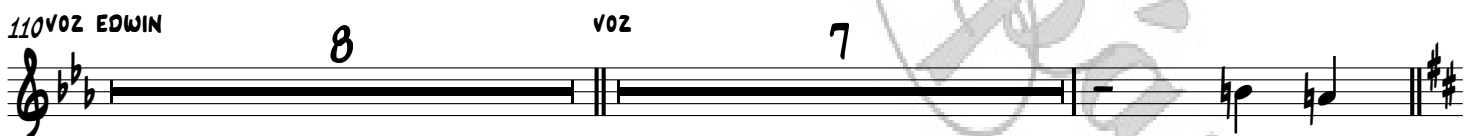
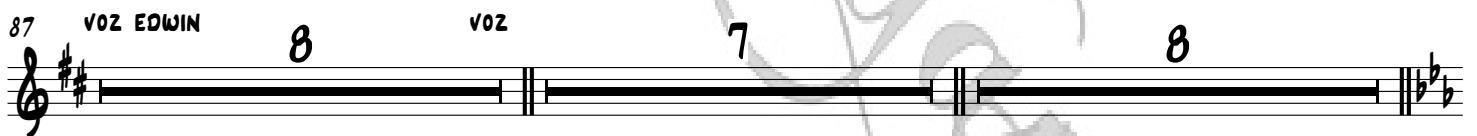
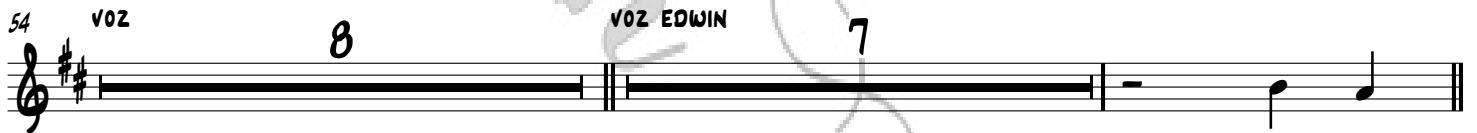
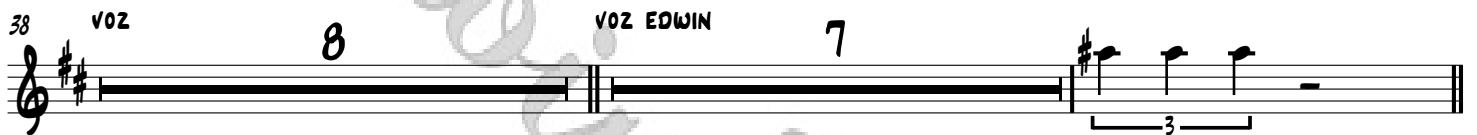
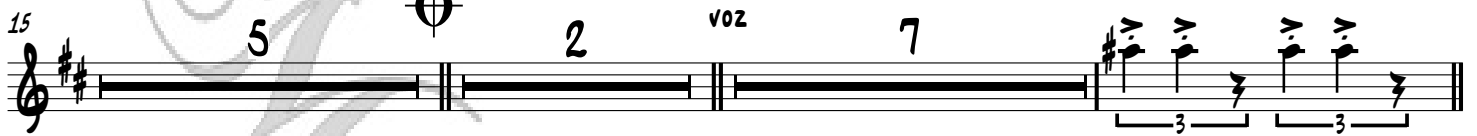
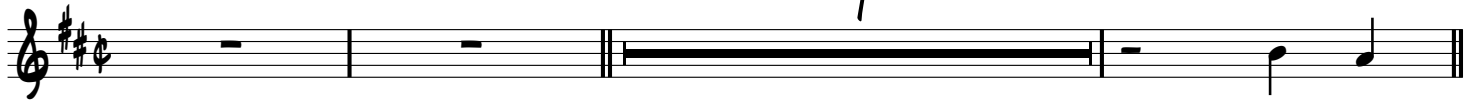
Melvin Yapan

$\text{♩} = 87$

ENTRA TAROLAS

PIANO Y BATO

7



Culpable o No

TROMPETA 1RA.

$\text{♩} = 87$

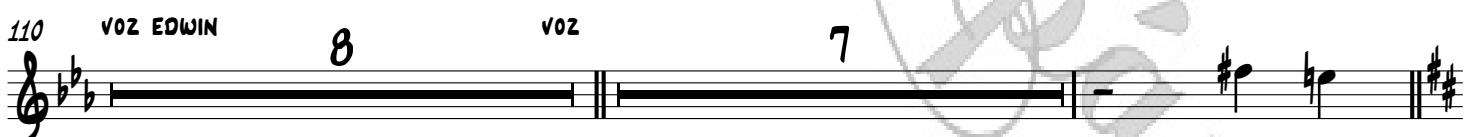
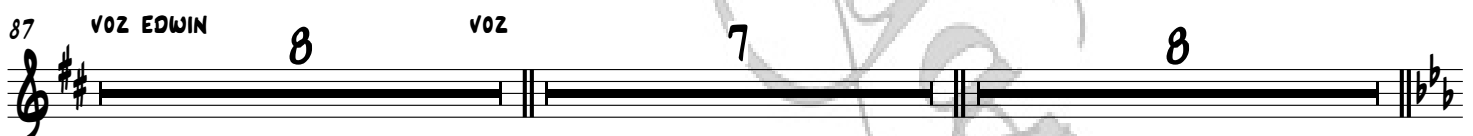
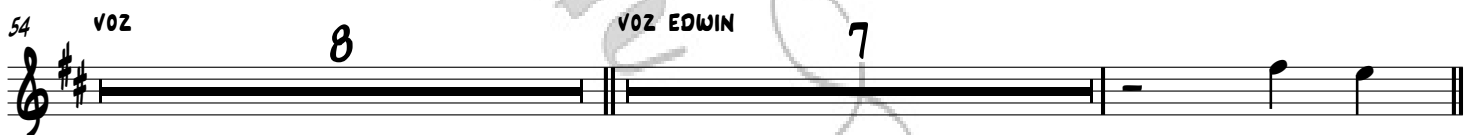
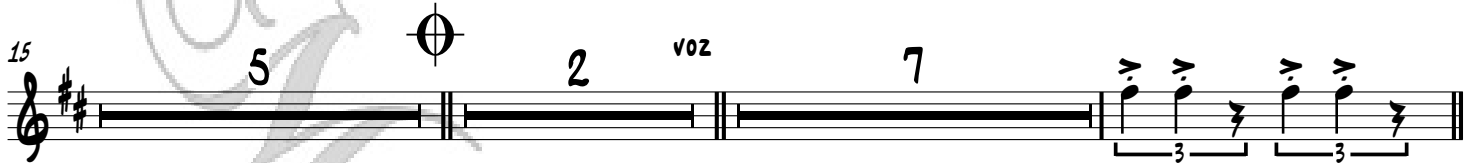
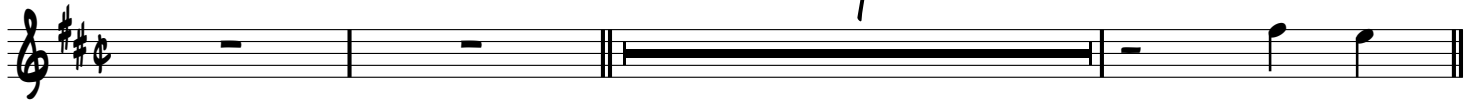
Arturo Jaimes y los Cantantes
F.T. Edwin Luna y la Trakalosa de Monterrey

Melvin Yapan

ENTRA TABLAS

PIANO Y BATO

7



Culpable o No

TROMPETA 2DA.

♩ = 87

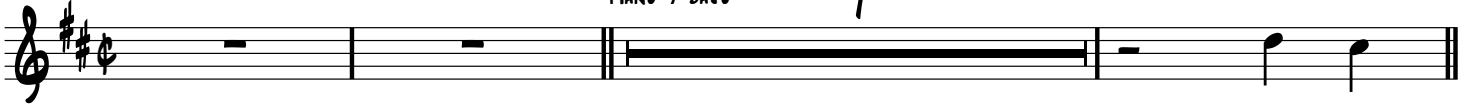
Arturo Jaimes y los Cantantes
F.T. Edwin Luna y la Trakalosa de Monterrey

Melvin Yapán

ENTRA TAROLAS

PIANO Y BATO

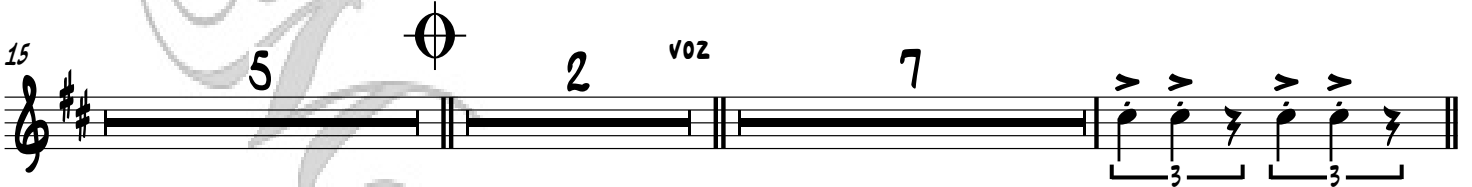
7



11



15



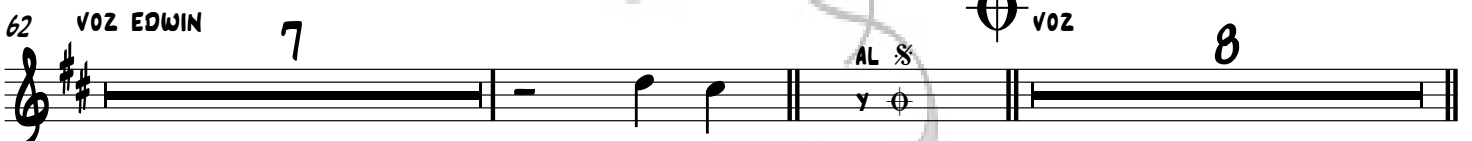
30 VOZ EDWIN



46 VOZ EDWIN



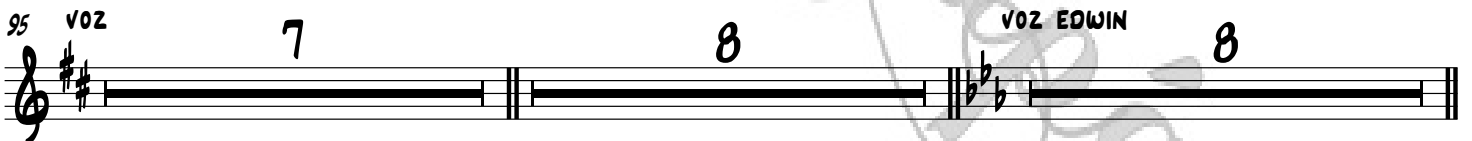
62 VOZ EDWIN



79 VOZ EDWIN



95 VOZ



118 VOZ



130



Culpable o No

TROMPETA 3RA.

Melvin Yapán

Arturo Jaimes y los Cantantes
F.T. Edwin Luna y la Trakalosa de Monterrey

♩ = 87

ENTRA TABLAS

PIANO Y BATO

7

11

15

30 VOZ EDWIN

46 VOZ EDWIN

62 VOZ EDWIN

79 VOZ EDWIN

95 VOZ

118 VOZ

130

Culpable o No

TROMBÓN 1RO.

♩ = 87

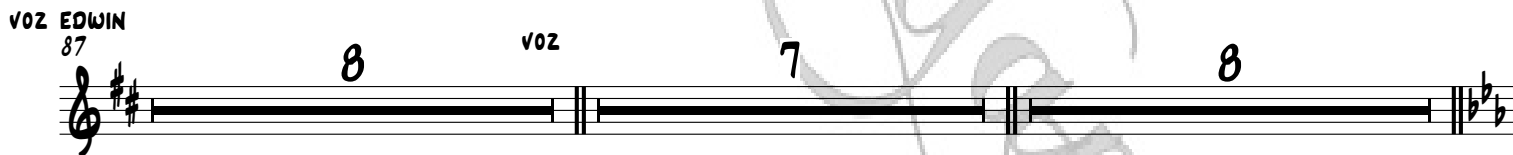
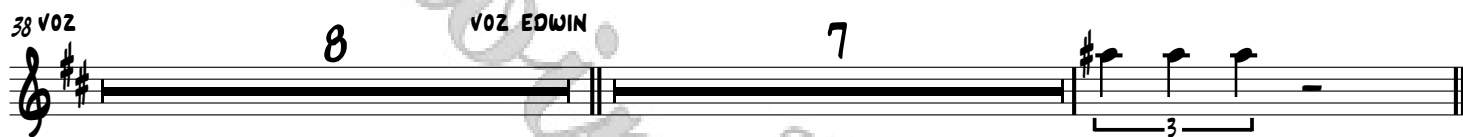
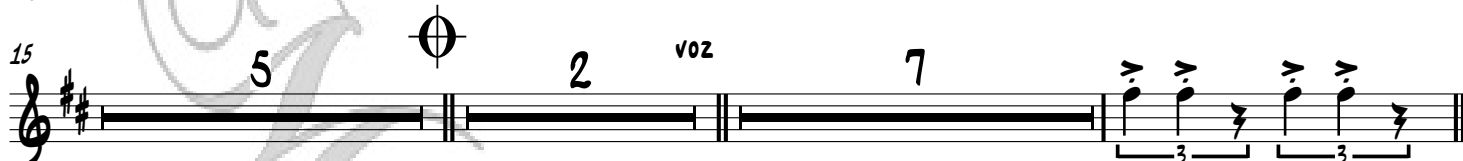
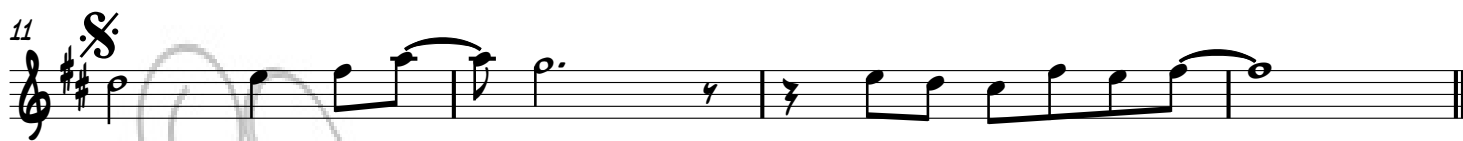
Arturo Jaimes y los Cantantes
F.T. Edwin Luna y la Trakalosa de Monterrey

Melvin Yapán

ENTRA TABLAS

PIANO Y BATO

7



Culpable o No

TROMBÓN 3RO.

Arturo Jaimes y los Cantantes
F.T. Edwin Luna y la Trakalosa de Monterrey

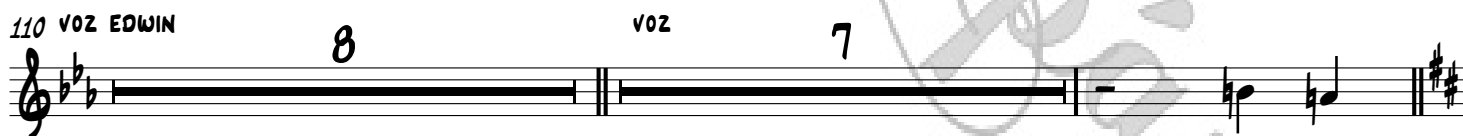
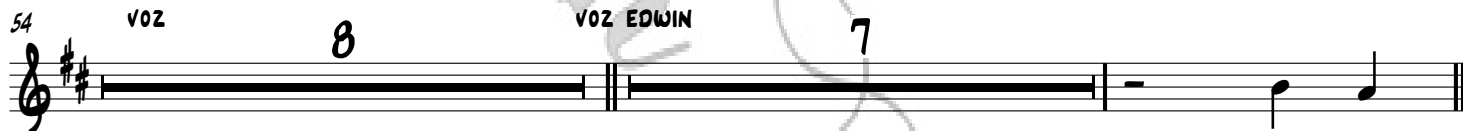
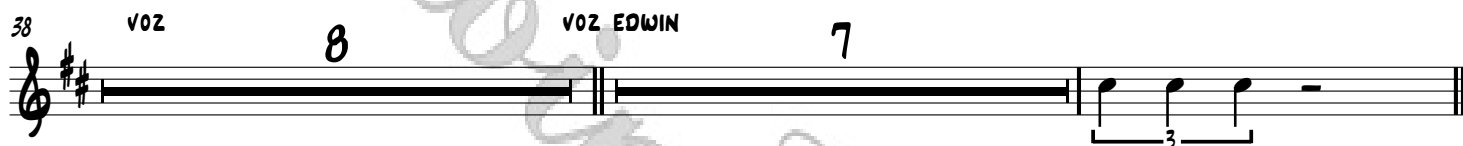
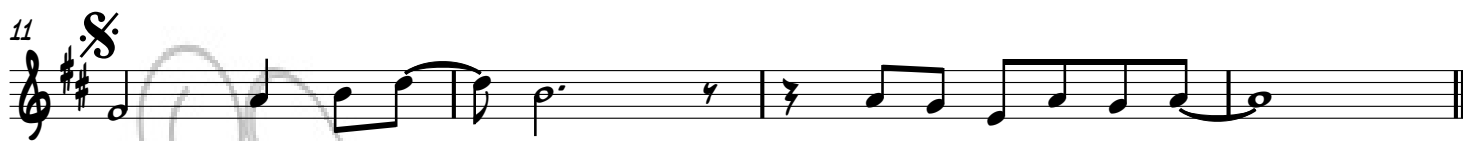
Melvin Yapan

$\text{♩} = 87$

ENTRA TAROLAS

PIANO Y BATO

7



Culpable o No

TUBA IN C

$\text{♩} = 87$

Arturo Jaimes y los Cantantes
F.T. Edwin Luna y la Trakalosa de Monterrey

Melvin Yapan

ENTRA TAROLAS

PIANO Y BATO

8 S



BATO EN Sib

Culpable o No

Arturo Jaimes y los Cantantes
F.T. Edwin Luna y la Trakalosa de Monterrey

Melvin Yapan

$\text{♩} = 87$

ENTRA TAROLAS

PIANO Y BATO

8

8

15

5

2

VOZ

7

30 VOZ EDWIN

37 VOZ

44 VOZ EDWIN

50

54 VOZ

8

VOZ EDWIN

8

AL

VOZ

76 VOZ EDWIN

81

87 VOZ EDWIN

8

VOZ

7

8

110 VOZ EDWIN

8

VOZ

8

130

7

PIANO Y SINTES

♩ = 87

ENTRA TAROLAS

Culpable o No

Melvin Yapan

Arturo Jaimes y los Cantantes

F.T. Edwin Luna y la Trocalosa de Monterrey

PIANO Y BATO

Musical notation for measures 1-7, featuring piano and bass lines.

Musical notation for measures 8-14, including triplets and a flute part labeled "FLAUTA".

Musical notation for measures 15-19, including a canaveral part labeled "CANAVERAL".

Musical notation for measures 20-29, including strings, voice, bell, piano, and strings.

Musical notation for measures 30-33, including voice, strings, and flute.

Musical notation for measures 46-53, including voice and strings.

Musical notation for measures 54-61, including voice and strings.

Musical notation for measures 62-69, including voice, strings, and piano.

Musical notation for measures 70-71, including voice and strings.

73 FLAUTA

79 VOZ EDWIN
TECHNO CRAFT

87 VOZ EDWIN
STRINGS

95 VOZ CAÑAVERAL
STRINGS

102

110 VOZ EDWIN
STRINGS

118 VOZ CAÑAVERAL
STRINGS

125 FLAUTA

133 CAÑAVERAL

BATO ELECTRICO

♩ = 87

Culpable o No

Melvin Yapan

Arturo Jaimes y los Cantantes

F.I. Edwin Luna y la Trakalosa de Monterrey

ENTRA TABOLOS

PIANO Y BATO

8

15

22

F E7 Am G F E

30

Am Dm Am G C

30

VOZ EDWIN

54

Am Dm G C F Bdis E7 Am

62

Am Dm G C F Bb E7 Am E

70

AL VOZ VOZ EDWIN VOZ EDWIN

Am Dm G C F Bdis E7 Am

95

Am Dm G C F Bb E7 Am Dm G C F

107

B E7 Fsus Bbm Ebm Ab Db Gb Cdis F Bbm

118

Bbm Ebm Ab Db Gb Cb F

126

3 F E7 Am G F E

135

Am G F E