

"DIFERENTES"

CLARINETE 1

JERRY

VOZ

8

15

21

28

35

42

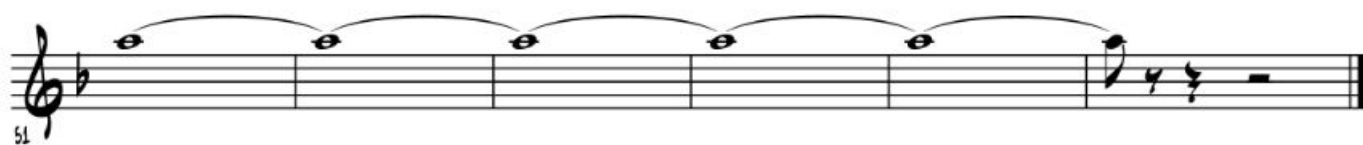
48

51

"DIFERENTES"

CLARINETE 2

JERRY



"DIFERENTES"

CLARINETE 3

JERRY

VOZ

3

8

15

21

28

35

42

48

51

Detailed description of the musical score: The score is written for Clarinet 3 in a key signature of one flat (Bb) and a 3/4 time signature. It consists of nine staves of music. The first staff begins with a whole rest followed by a series of eighth and quarter notes, ending with a half note. A dynamic marking 'VOZ' is placed above the staff. The second staff starts with a quarter rest, followed by eighth notes and a quarter note. The third staff features a series of eighth notes, followed by a quarter note and a half note. The fourth staff continues with eighth notes and quarter notes. The fifth staff includes a triplet of eighth notes. The sixth staff features a triplet of eighth notes and a quarter note. The seventh staff continues with eighth notes and quarter notes. The eighth staff starts with a quarter rest, followed by eighth notes and a quarter note. The ninth staff consists of five half notes, each with a slur above it, followed by a quarter rest.

"DIFERENTES"

TROMBON 3

JERRY



8



15



22



29



36



43



50



57

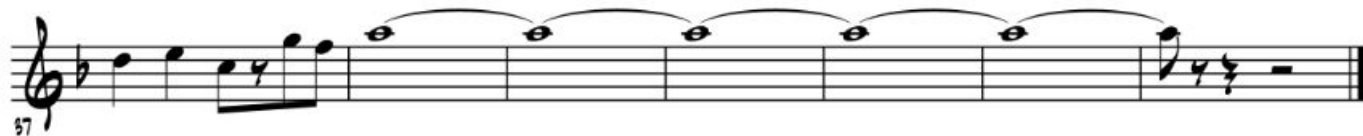


64

"DIFERENTES"

TROMPETA 1

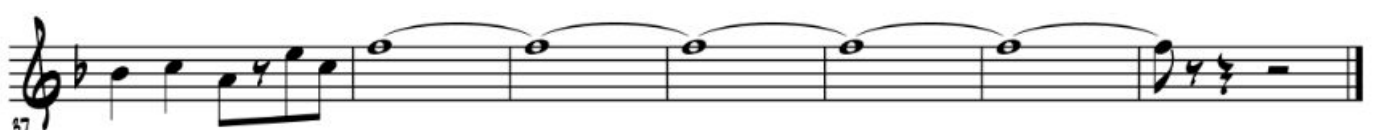
JERRY



"DIFERENTES"

TROMPETA 2

JERRY



"DIFERENTES"

TROMPETA 3

JERRY



"DIFERENTES"

SAXORES 1-2

JERRY

VO2

1. 2. (A)

AL (A)

3

"DIFERENTES"

TUBA

JERRY

Musical score for Tuba, titled "DIFERENTES" by Jerry. The score is written in bass clef with a key signature of one flat (B-flat) and a common time signature (C). The piece consists of 58 measures, with measure numbers 7, 15, 19, 25, 31, 36, 41, 47, and 55 indicated at the start of their respective staves. The score includes various musical notations such as rests, eighth notes, quarter notes, and half notes. There are several first and second endings marked with "1." and "2.". A section starting at measure 31 is marked "AL" (Allegro) and contains a circled "A" above a measure. A circled "A" also appears above a measure at measure 15. A circled "A" with a cross inside is present above a measure at measure 31. A circled "A" with a cross inside is also present above a measure at measure 41. A circled "A" with a cross inside is present above a measure at measure 55. The score concludes with a double bar line at measure 58.

