

# (( El Gallo Viejo ))

Clarinet 1 in B $\flat$

Carnavalera

## Banda La Bucanera

Partituras

Erick Cruz C

WhatsApp 9512236217

$\text{♩} = 160$

7

16

22

30

50

64

70

76

2

84

*Clarinet 1 in B $\flat$*   
*To Coda*

**11**

**4**

2.

Musical staff for Clarinet 1 in B $\flat$ , measures 84-94. It features a first ending bracket over measures 84-93 and a second ending bracket over measures 94-95. The first ending ends with a double bar line and repeat dots. The second ending contains three eighth notes: G4, A4, and B4.

101

*D.C. al Coda*

Musical staff for Clarinet 1 in B $\flat$ , measures 101-104. It contains four measures of music. The first measure has a quarter note G4, a quarter note A4, and a quarter note B4. The second measure has a quarter rest. The third and fourth measures have quarter rests.



*Fine*

Musical staff for Clarinet 1 in B $\flat$ , measures 105-108. It contains four measures of music. The first measure has a quarter note G4, a quarter note A4, and a quarter note B4. The second measure has a quarter rest. The third measure has a quarter note G4, a quarter note A4, and a quarter note B4. The fourth measure has a quarter note G4, a quarter note A4, and a quarter note B4. The staff ends with a double bar line.

# (( El Gallo Viejo ))

Clarinet 2 in B $\flat$

Carnavalera

## Banda La Bucanera

Partituras

Erick Cruz C

WhatsApp 9512236217

$\text{♩} = 160$

7

16

22

30

10

4

50

4

3

1.

2.

64

70

76

1.

2.

3

2  
84

**Clarinet 2 in B $\flat$**   
**To Coda**

**11**

1. **4**

2.

101

**D.C. al Coda**

**Fine**



2

84

*Clarinet 3 in B $\flat$*   
*To Coda*

**11**

1.

**4**

2.

101

*D.C. al Coda*

*Fine*

# (( El Gallo Viejo ))

Trumpet 1 in B $\flat$

Carnavalera

## Banda La Bucanera

Partituras

Erick Cruz ©

WhatsApp 9512236217

$\text{♩} = 160$

9

15

29

40

48

56

63

80

89

To Coda

2

*Trumpet 1 in B $\flat$*

96

Musical notation for Trumpet 1 in B $\flat$ , measures 96-100. The notation includes a first ending (1.) and a second ending (2.). The first ending consists of a melodic line with a trill on the final note. The second ending is a shorter melodic phrase.

101

*D.C. al Coda*

Musical notation for *D.C. al Coda*, measures 101-103. The notation shows a melodic line in measure 101, followed by two measures of whole rests.

*Fine*

Musical notation for *Fine*, measures 101-103. The notation shows a melodic line in measure 101, followed by two measures of whole rests, with a fermata over the final note.

# (( El Gallo Viejo ))

Trumpet 2 in B $\flat$

Carnavalera

## Banda La Bucanera

Partituras

Erick Cruz ©

WhatsApp 9512236217

$\text{♩} = 160$

9

15

29

40

48

56

63

80

89

To Coda

2

*Trumpet 2 in B $\flat$*

96

1. 2.

101

*D.C. al Coda*

*Fine*

# (( El Gallo Viejo ))

Trumpet 3 in B $\flat$

Carnavalera

## Banda La Bucanera

Partituras

Erick Cruz ©

WhatsApp 9512236217

$\text{♩} = 160$

9

15

29

40

48

56

63

80

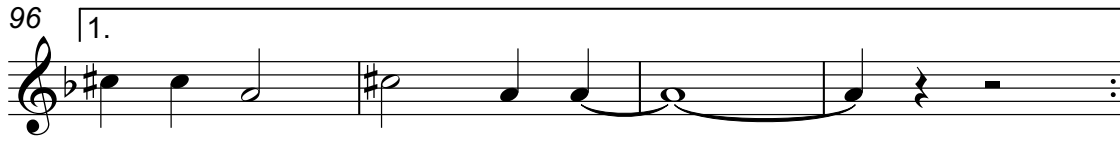
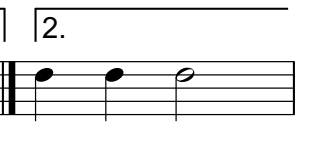
89

To Coda

2

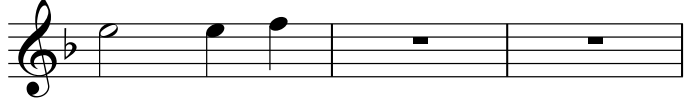
*Trumpet 3 in B $\flat$*

96

1.  2. 

101

*D.C. al Coda*



*Fine*



# (( El Gallo Viejo ))

**Trombone 1**

**Carnavalera**

## **Banda La Bucanera**

Partituras

Erick Cruz C

WhatsApp 9512236217

$\text{♩} = 160$

9

15

29

40

48

56

63

80

86

2  
94

*To Coda* *Trombone 1*

1.

100

*D.C. al Coda*

2.

*Fine*

# (( El Gallo Viejo ))

Trombone 2

Carnavalera

## Banda La Bucanera

Partituras

Erick Cruz C

WhatsApp 9512236217

$\text{♩} = 160$

9

15

29

40

48

56

63

80

86

2

94

*To Coda* **Trombone 2**

1.

100

2.

**D.C. al Coda**

2.

**Fine**

# (( El Gallo Viejo ))

## Banda La Bucanera

Trombone 3

Carnavalera

Partituras

Erick Cruz C

WhatsApp 9512236217

♩ = 160

9

15

29

40

48

56

63

80

86

2

94

*Trombone 3*

*To Coda*

1.

100

*D.C. al Coda*

2.

*Fine*

# (( El Gallo Viejo ))

Tuba

Carnavalera

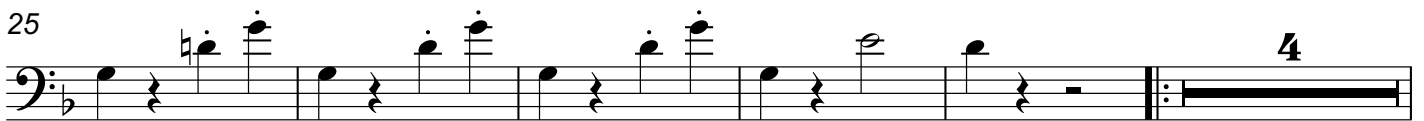
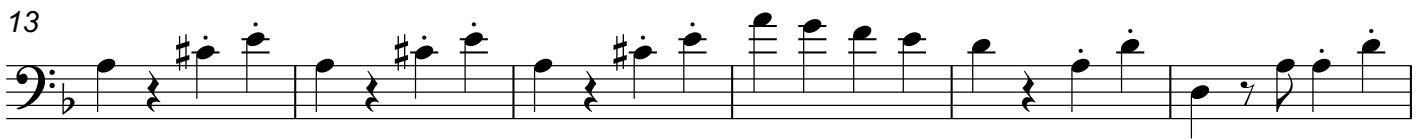
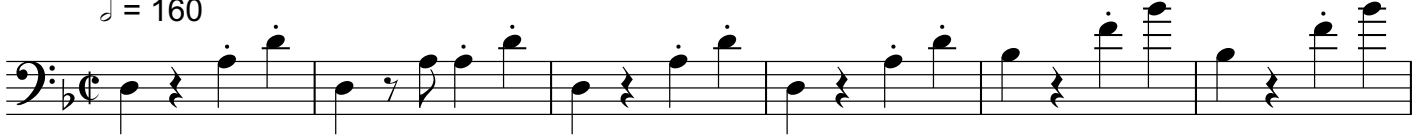
## Banda La Bucanera

Partituras

Erick Cruz ©

WhatsApp 9512236217

♩ = 160



2

**Туба**

58

64

70

76

82

88

**To Coda**

94

100

**D.C. al Coda**

**Fine**