

" EL MAGNATE "

CLAR 20

SANDA CARNAVAL

9

21

31

47

55

62

70

3

6

4

11

tr

D.C.
y
CODA

" EL MAGNATE "

CLAR 30

SANDA CARNAVAL

3



9



21



31



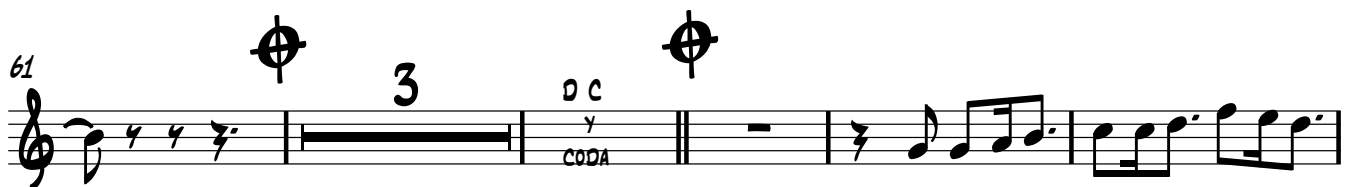
47



54



61



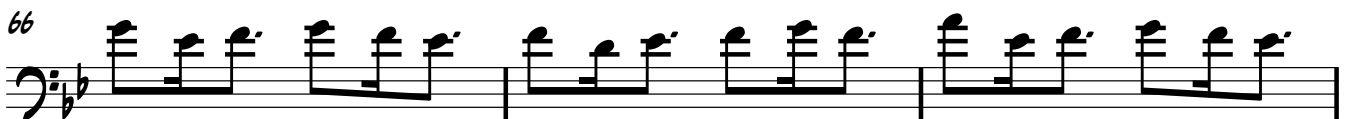
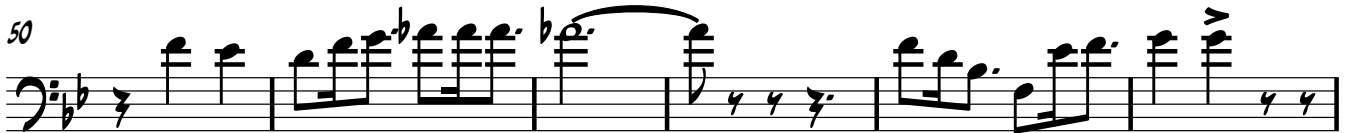
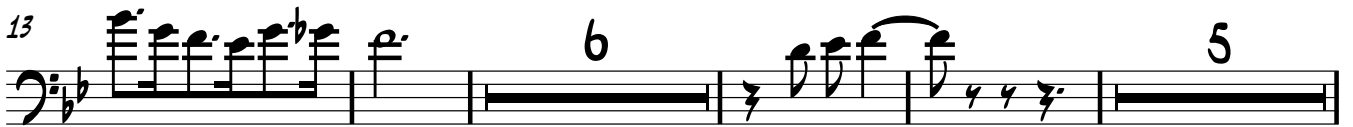
69



" EL MAGNATE "

TROMB 10

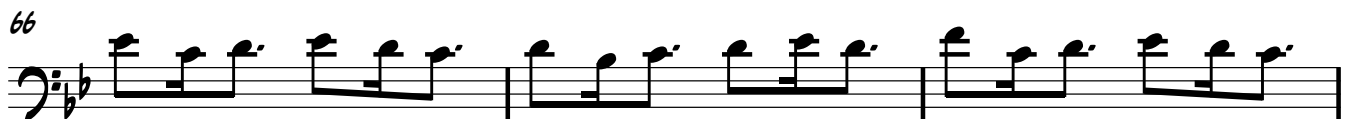
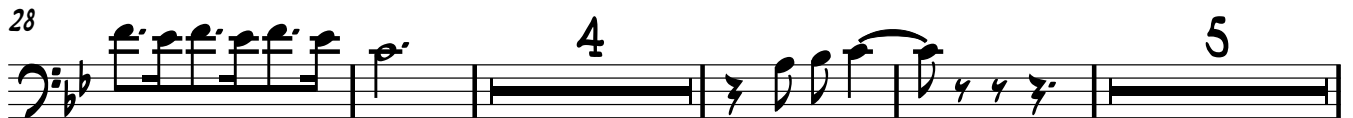
SANDA CARNAVAL



" EL MAGNATE "

TROMB 20

SANDA CARNAVAL



" EL MAGNATE "

TROMB 30

SANDA CARNAVAL

7

14

30

44

52

62

68

D.C.
CODA

" EL MAGNATE "

TROMBAS 10

SANDA CARNAVAL

7

14

30

44

52

62

68

6

5

4

5

2

4

D.C.
y
CODA

" EL MAGNATE "

TROMBAS 20

SANDA CARNAVAL

7

14

30

44

53

63

68

DC
CODA

" EL MAGNATE "

TROMBAS SIB 30

SANDA CARNAVAL

7

14

30

44

52

62

68

D.C.
y
CODA

" EL MAGNATE "

TROMP 1A

SANDA CARNAVAL

6

3

9

2

17

24

24

10

40

6

52

4

62

2

D.C.
CODA

69

69

" EL MAGNATE "

TROMP 2A

SANDA CARNAVAL

3

9

17

24

10

40

6

52

4

62

2

DC
CODA

69

" EL MAGNATE "

TROMP 3A

SANDA CARNAVAL

3

9

17

24

10

40

6

52

4

62

69

SAXO 2

"EL MAGNATE"

CARNIVAL

6/8

MARTIN CAMPA CAMARGO@HOTMAIL.COM
 BRAVO #201 RINCON DE TAMAYO GTO.
 TEL.4616620390 CEL.4611348422

" EL MAGNATE "

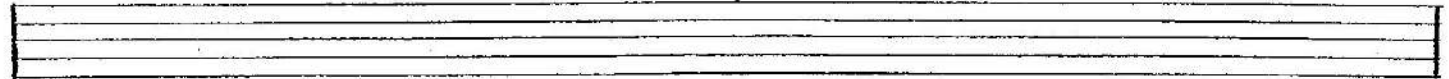
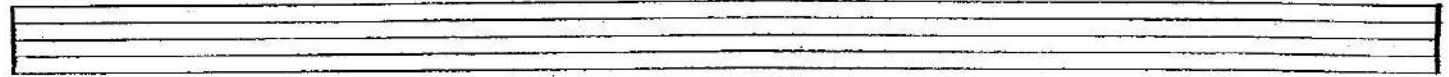
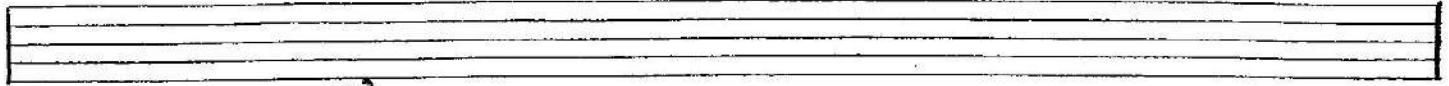
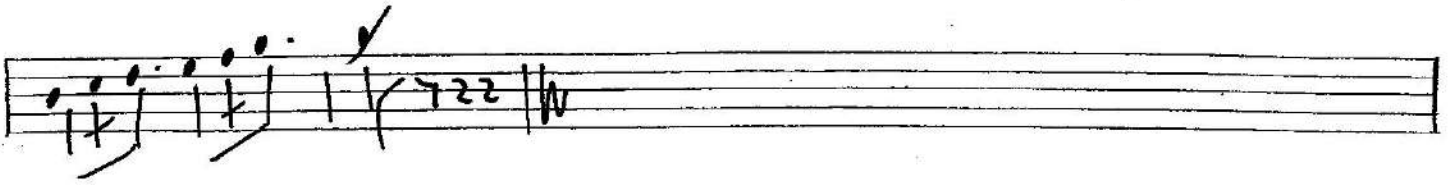
1/2 3/4

Handwritten musical score for 'El Magnate'. The score is written on ten staves. The first staff begins with a treble clef and a 6/8 time signature. The music consists of a melody line with various note values (quarter, eighth, and sixteenth notes) and rests, and a bass line with chords and rhythmic patterns. There are several dynamic markings and articulation symbols throughout the piece.

MARTIN_CAMPA_CAMARGO@HOTMAIL.COM
 BRAVO #201 RINCON DE TAMAYO GTO.
 TEL.4616620390 CEL.4611348422

Continuation of the handwritten musical score for 'El Magnate'. This section covers staves 5 through 10. It continues the melodic and harmonic development of the piece, featuring similar rhythmic patterns and note values as the first section. The notation includes various musical symbols such as slurs, ties, and dynamic markings.

EL MAGNATE



MARTIN_CAMPA_CAMARGO@HOTMAIL.COM

BRAVO #201 RINCON DE TAMAYO GTO.

TEL.4616620390 CEL.4611348422

