

EL MOREÑO

♩ = 180



MM

Bb Clarinet 1

The musical score for Bb Clarinet 1 is written in 3/4 time with a key signature of one flat (Bb). It begins with a tempo marking of 180 beats per minute and a mezzo-forte (MM) dynamic. The score consists of ten staves of music. The first staff includes a treble clef, a key signature change to Bb, and a 3/4 time signature. The music features a variety of note values, including quarter, eighth, and sixteenth notes, as well as rests and slurs. A first ending bracket spans the final two staves, with a first ending (1.) and a second ending (2.). The score concludes with a double bar line, a 'D.S. al Coda' instruction, and a Coda section marked with a Coda symbol (⊕) and a key signature change to natural (C).

J GPE ORTIZ B.
PATO
la aldea
cel 4721080128 I.D

EL MOREÑO

♩ = 180



MM

Bb Clarinet 2

The musical score for Bb Clarinet 2 consists of ten staves. It begins with a treble clef, a key signature of one flat (Bb), and a 3/4 time signature. The tempo is marked as MM (Moderato) with a quarter note equal to 180 beats per minute. The score includes various musical notations such as quarter notes, eighth notes, and rests, along with dynamic markings like cresc. and D.S. al Coda . A first and second ending bracket is present on the eighth staff. The piece concludes with a Coda section marked with a circled cross symbol.

J GPE ORTIZ B.
PATO
la aldea
cel 4721080128 I.D

EL MOREÑO

♩ = 180



MM

Bb Clarinet 3

To Coda ⊕

1. 2.

D.S. al Coda ⊕ Coda

J GPE ORTIZ B.
PATO
la aldea
cel 4721080128 I.D

EL MOREÑO

Trombon 1 $\text{♩} = 180$ MM

D.S. al Coda

J GPE ORTIZ B.
PATO
la aldea
cel 4721080128 I.D

EL MOREÑO

Trombon 2

$\text{♩} = 180$ **MM**

The musical score for Trombon 2 is written in bass clef, 3/4 time, and B-flat major. It begins with a tempo marking of quarter note = 180 and a metronome (MM) symbol. The score consists of ten staves of music. The first staff includes a repeat sign and a first ending bracket. The second staff ends with a 'To.Coda' symbol. The third staff features a first ending bracket. The fourth staff contains a first ending bracket and a second ending bracket. The fifth staff ends with a first ending bracket. The sixth staff concludes with a first ending bracket. The seventh staff contains a first ending bracket and a second ending bracket. The eighth staff begins with a 'D.S. al Coda' instruction and ends with a Coda symbol. The ninth staff starts with a Coda symbol and contains the final musical notation.

J GPE ORTIZ B.
PATO
la aldea
cel 4721080128 I.D

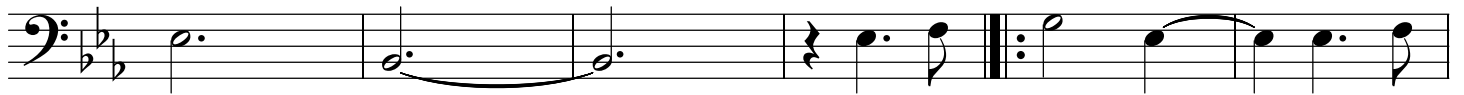
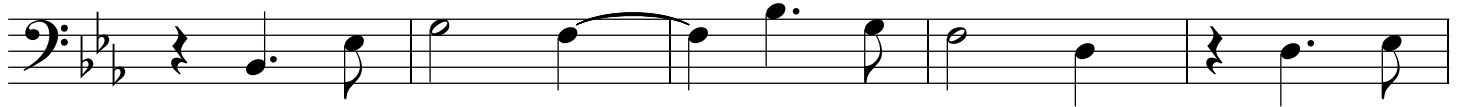
EL MOREÑO

♩ = 180

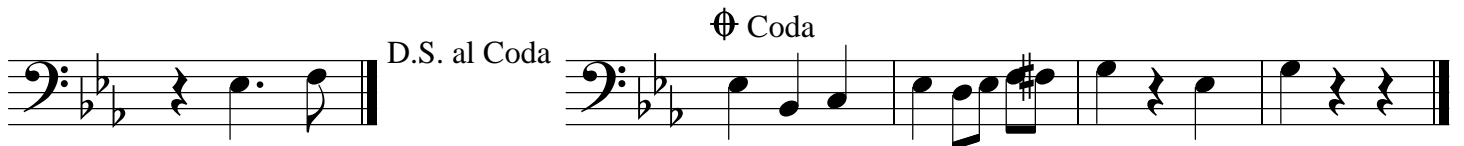
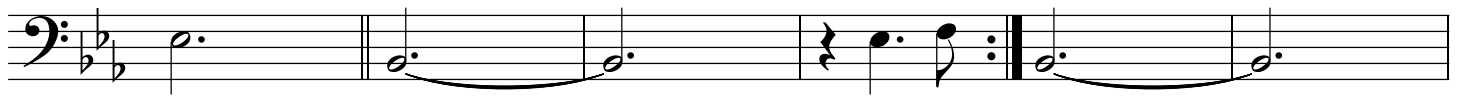


MM

Trombon 3



1. 2.



J GPE ORTIZ B.
PATO
la aldea
cel 4721080128 I.D

EL MOREÑO

Trompeta 1 $\text{♩} = 180$ MM

J GPE ORTIZ B.
PATO
la aldea
cel 4721080128 I.D

EL MOREÑO

Trompeta 2 $\text{♩} = 180$ ♩ MM

To Coda ⊕

D.S. al Coda ⊕ Coda

J GPE ORTIZ B.
PATO
la aldea
cel 4721080128 I.D

EL MOREÑO

Trompeta 3 $\text{♩} = 180$ ♩ MM

To Coda ⊕

1. 2.

D.S. al Coda ⊕ Coda

J GPE ORTIZ B.
PATO
la aldea
cel 4721080128 I.D

EL MOREÑO

SAXOR

$\text{♩} = 180$



MM

J GPE ORTIZ B.
PATO
la aldea
cel 4721080128 I.D

Tuba
♩ = 180

EL MOREÑO

♩ = 180

To Coda ⊕

1.

2.

D.S. al Coda

⊕ Coda

J GPE ORTIZ B.
PATO
la aldea
cel 4721080128 I.D