

Trompetas

" EL PARIENTE "

Recodo



Handwritten musical notation for Trompetas (Trumpets). The score consists of four staves of music. The first staff begins with a treble clef, a key signature of one flat (Bb), and a common time signature (C). The music features various rhythmic patterns, including eighth and sixteenth notes, and rests. Red dots are placed above notes to indicate fingerings. The notation includes slurs, ties, and dynamic markings.

Handwritten musical notation for Tromb (Trombone) and Tuba. The section starts with a double bar line and the number '16'. The Tromb part begins on a staff with a treble clef, featuring a key signature change to one sharp (F#) and a common time signature. The Tuba part is indicated by a double bar line and the number '7'. The notation includes complex rhythmic figures, slurs, and dynamic markings. Red dots indicate fingerings. The section concludes with a double bar line and the number '15'.

Handwritten musical notation for Tuba and Tromb. The section begins with a double bar line and the number '16' for the Tuba part, followed by a double bar line and the number '15' for the Tromb part. The notation includes rests and dynamic markings.



Handwritten musical notation for Trompetas, consisting of three staves. The notation includes various notes, rests, and articulation marks such as accents and slurs. The first staff begins with a treble clef and a key signature of one sharp (F#). The second and third staves continue the melodic line with similar notation.



clarinetes

"EI PARIENTE"

Recodo



Handwritten musical score for clarinet. The score is written on ten staves. The first staff begins with a treble clef, a key signature of one flat (Bb), and a common time signature (C). The music consists of various rhythmic patterns, including eighth and sixteenth notes, and rests. There are several dynamic markings such as mf and f , and articulation marks like '+' and '-'. A large watermark is visible in the background of the page.

clarinetes

" EL PARIENTE "

Recodo 



"EL PARIENTE"

Recodo



Trombones

Handwritten musical notation for Trombones, starting with a bass clef and a key signature of three flats (B-flat, E-flat, A-flat). The notation includes various chords and melodic lines with red dots indicating fingerings.

Handwritten musical notation for Trombones, continuing the piece. It includes a measure with a fermata and the number '16'.

Handwritten musical notation for Trombones, featuring a section labeled 'Tromp' with a measure containing the number '8'. It also includes a section labeled 'Solo'.

Handwritten musical notation for Trombones, showing a melodic line with various intervals and fingerings.

Handwritten musical notation for Trombones, continuing the melodic line with complex rhythmic patterns.

Handwritten musical notation for Trombones, featuring a section with a key signature change to one sharp (F#) and a measure with the number '15'.

Handwritten musical notation for Trombones, continuing the piece with various chords and melodic lines.

Handwritten musical notation for Trombones, showing a melodic line with various intervals and fingerings.

Handwritten musical notation for Trombones, featuring a section with a key signature change to one sharp (F#) and a measure with the number '15'. It includes the text 'ala/Al y'.

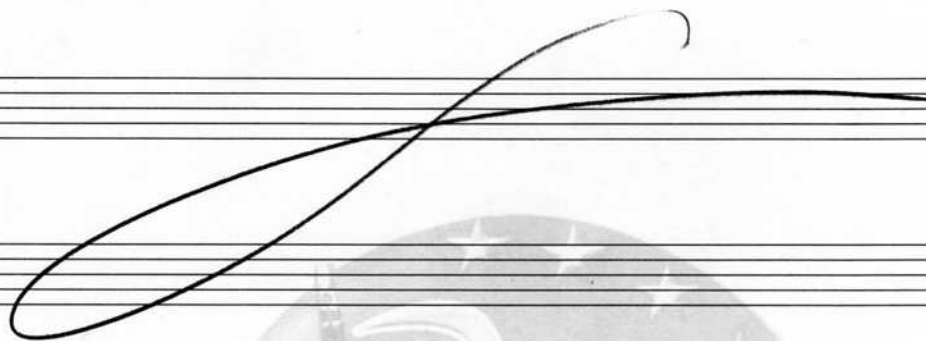
Handwritten musical notation for Trombones, continuing the piece with various chords and melodic lines.

Handwritten musical notation for Trombones, showing a melodic line with various intervals and fingerings.

Trombones

"EL PARIENTE"

Recodo



Tuba y Sx

" EL PARIENTE "

Recodo



Handwritten musical score for Tuba and Saxophone. The score is written on a grand staff with a key signature of one flat (Bb) and a common time signature (C). The music consists of several staves of notes and rests, with red letterhead harmonies (C, G, F, Bb, D) written above the notes. A section of the music is marked with a double bar line and the word "Solo" above it. The score concludes with the instruction "ala / A y Sigue".

Saxones
en
C

