

1er clarinete

EL QUELITE

VICTOR M CAMACHO

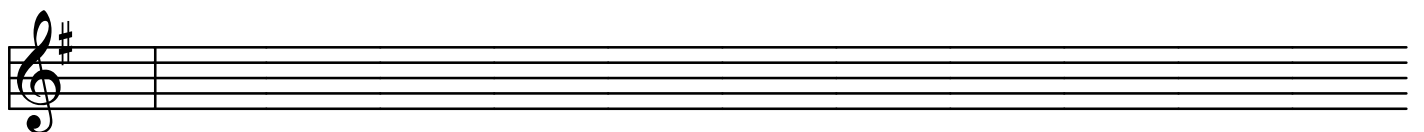
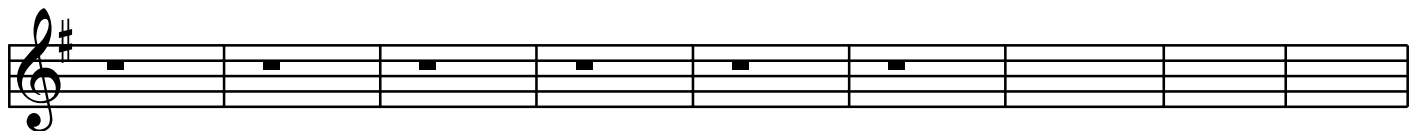
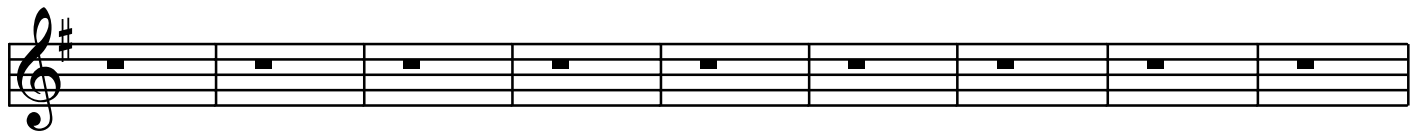
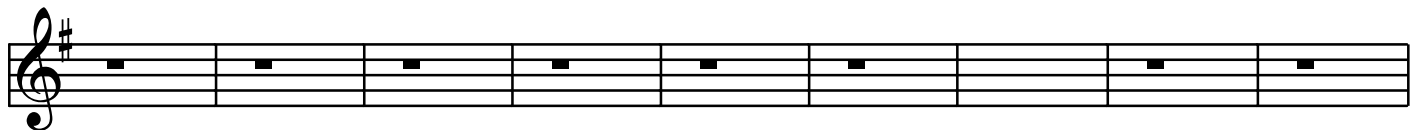
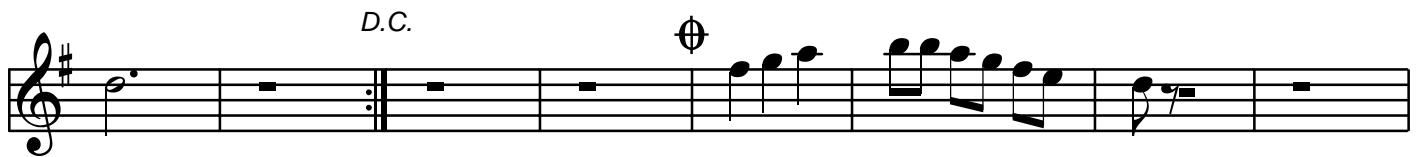
Musical score for 1st Clarinet of "EL QUELITE" by Victor M. Camacho. The score is in 3/4 time, key of D major, and consists of 10 staves. The first four staves contain the main melody with various ornaments and phrasing. The fifth staff begins with a "DUO" section, followed by a "D.C." (Da Capo) section. The final six staves are empty, indicating a repeat or continuation of the piece.

2do clarinete

EL QUELITE

VICTOR M CAMACHO

Musical score for 2do clarinete, titled EL QUELITE by VICTOR M CAMACHO. The score is written in treble clef with a key signature of one sharp (F#) and a 3/4 time signature. The first four staves contain the main melodic line, featuring various ornaments and phrasing. The fifth staff begins with a 'DUO' section, followed by a 'D.C.' (Da Capo) section. The remaining three staves are empty, indicating a repeat or continuation of the previous material.



1er trombon

EL QUELITE

VICTOR M CAMACHO

First staff of music for 1st Trombone, featuring a 3/4 time signature, a key signature of one flat, and a melodic line with eighth and quarter notes.

Second staff of music for 1st Trombone, continuing the melodic line with various note values and rests.

DUO

DUO

Third staff of music for 1st Trombone, marked "DUO", showing a change in the melodic pattern.

Fourth staff of music for 1st Trombone, continuing the melodic line.

D.C.

D.C.

Fifth staff of music for 1st Trombone, marked "D.C.", featuring a repeat sign and a melodic phrase.

Sixth staff of music for 1st Trombone, consisting of a whole rest in each measure.

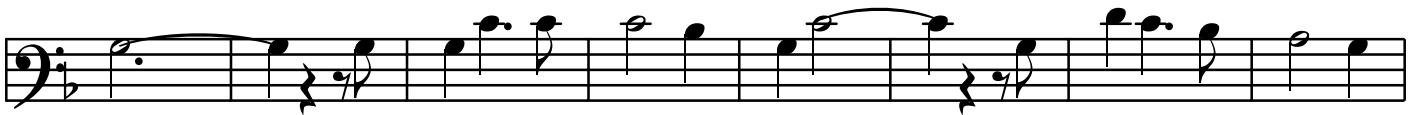
Seventh staff of music for 1st Trombone, consisting of a whole rest in each measure.

Eighth staff of music for 1st Trombone, consisting of a whole rest in each measure.

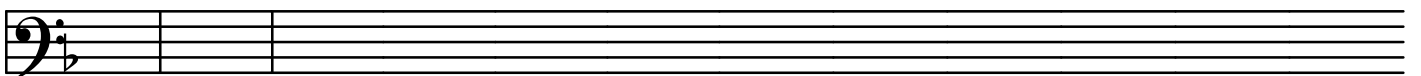
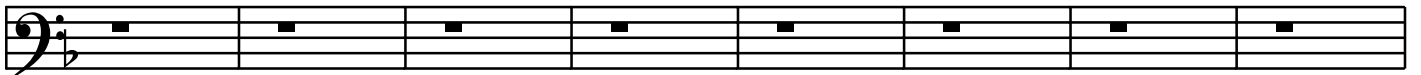
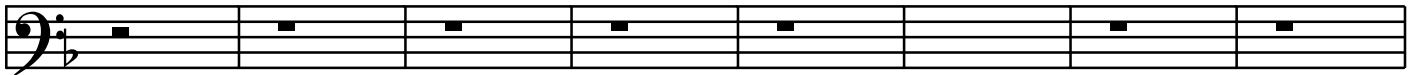
Ninth staff of music for 1st Trombone, consisting of a whole rest in each measure.



DUO



D.C.

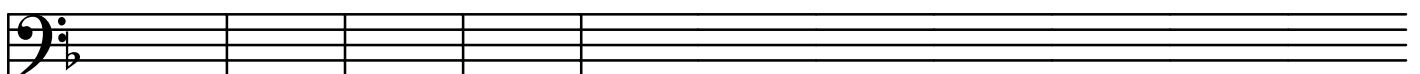
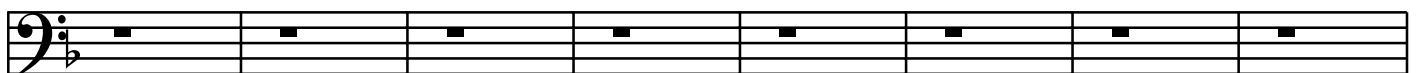
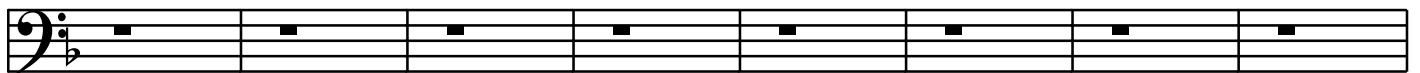
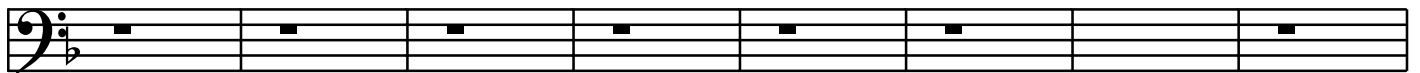




DUO



D.C.



1era trompeta

EL QUELITE

VICTOR M CAMACHO

Musical notation for the first trumpet part of 'El Quelite'. It consists of three staves of music in G major and 3/4 time. The first staff begins with a treble clef, a key signature of one sharp (F#), and a 3/4 time signature. The melody starts with a quarter rest, followed by a quarter note G4, an eighth note A4, and a quarter note B4. The second staff continues the melody with a quarter note C5, a quarter note B4, and a quarter note A4. The third staff concludes the phrase with a quarter note G4, a quarter note F#4, and a quarter note E4. There are two fermatas (⊕) above the second and third staves.

2da trompeta

EL QUELITE

Musical notation for the second trumpet part of 'El Quelite'. It consists of three staves of music in G major and 3/4 time. The first staff begins with a treble clef, a key signature of one sharp (F#), and a 3/4 time signature. The melody starts with a quarter rest, followed by a quarter note G4, an eighth note A4, and a quarter note B4. The second staff continues the melody with a quarter note C5, a quarter note B4, and a quarter note A4. The third staff concludes the phrase with a quarter note G4, a quarter note F#4, and a quarter note E4. There are two fermatas (⊕) above the second and third staves.

3era trompeta

EL QUELITE

Musical notation for the third trumpet part of 'El Quelite'. It consists of four staves of music in G major and 3/4 time. The first staff begins with a treble clef, a key signature of one sharp (F#), and a 3/4 time signature. The melody starts with a quarter rest, followed by a quarter note G4, an eighth note A4, and a quarter note B4. The second staff continues the melody with a quarter note C5, a quarter note B4, and a quarter note A4. The third staff concludes the phrase with a quarter note G4, a quarter note F#4, and a quarter note E4. The fourth staff is empty. There are two fermatas (⊕) above the second and third staves.