

# EL SILENTIO

CUMB  
BANDA 1

TROMBON 1  
C

3

A

8 7

⊕ Coda

D.S. al Coda

⊕ Coda SOLOS A LO BESTIA  
16

a la A y

D.S. al Fine

==JAIME ORTEGA==JOROCHES GTO.==01 462 62 7 22 39==

LE SILENTE

CUMBI  
BANDA M

TROMBON 2  
C

D.S. al Coda    Coda    16    a la A y

D.S. al Fine

LE SILENTO

CUMI  
BANDA

TROMBON 3

D.S. al Coda  $\oplus$  Coda 16 a la A y D.S. al Fine

EL SILENCIO

CUMB  
BANDA M

CLARINETE 1



Musical notation for Clarinet 1, first system. Includes a treble clef, a 2/2 time signature, and a key signature of one sharp (F#). The notation features a series of eighth notes and rests.

Musical notation for Clarinet 1, second system. Includes a treble clef and a key signature of one sharp. The notation continues with eighth notes and rests.

Musical notation for Clarinet 1, third system. Includes a treble clef and a key signature of one sharp. The notation continues with eighth notes and rests.

Musical notation for Clarinet 1, fourth system. Includes a treble clef and a key signature of one sharp. The notation continues with eighth notes and rests.

Musical notation for Clarinet 1, fifth system. Includes a treble clef and a key signature of one sharp. The notation continues with eighth notes and rests.

Musical notation for Clarinet 1, sixth system. Includes a treble clef and a key signature of one sharp. The notation continues with eighth notes and rests.

Musical notation for Clarinet 1, seventh system. Includes a treble clef and a key signature of one sharp. The notation continues with eighth notes and rests.

Musical notation for Clarinet 1, eighth system. Includes a treble clef and a key signature of one sharp. The notation continues with eighth notes and rests.

Fine

Coda

D.S. al Coda

Coda SOLOS A LO BESTIA

8

a la A y

D.S. al Fine

EL SILENCIO

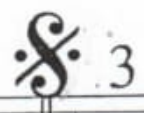
CUMBLA  
BANDA M...

TROMPETA 2

EL SILENCIO

CUMBLA  
BANDA M

TROMPETA 1



First staff of music for Trompete 1, starting with a 3-measure rest and followed by a melodic line.

Second staff of music, starting with a dynamic marking 'A' and ending with 'Fine 7'.

Third staff of music, continuing the melodic line.

Fourth staff of music, featuring a 6-measure rest.

Fifth staff of music, containing the instruction 'Coda D.S. al Coda Coda'.

Sixth staff of music, including a triplet of eighth notes.

Seventh staff of music, ending with 'a la A y D.S. al Fine' and a 7-measure rest.

EL SILENCIO

CUMB  
BANDA M

CLARINETE 3

EL SILENCIO

CUMBI  
BANDA M

CLARINETE 2



Musical staff with treble clef and 2/2 time signature. The staff contains a series of eighth and sixteenth notes, with some rests. A fermata is placed over a measure in the middle of the staff.

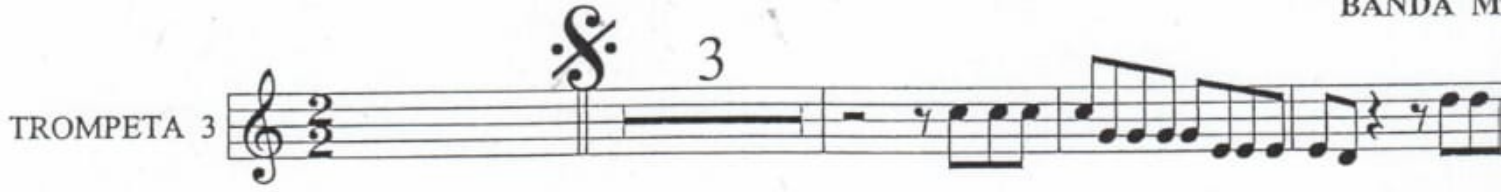
Musical staff with treble clef and 2/2 time signature. The staff contains a series of eighth and sixteenth notes. The word "Fine" is written above the staff towards the end.

Musical staff with treble clef and 2/2 time signature. The staff contains a series of eighth and sixteenth notes.

Musical staff with treble clef and 2/2 time signature. The staff contains a series of eighth and sixteenth notes. There are markings "7" and "6" above the staff, possibly indicating fingerings or measures.

Musical staff with treble clef and 2/2 time signature. The staff contains a series of eighth and sixteenth notes. The word "Coda" is written above the staff at the end.

Musical staff with treble clef and 2/2 time signature. The staff contains a series of eighth and sixteenth notes. The word "D.S. al Coda" is written above the staff. There is a Coda symbol (a circle with a cross) above the staff. The word "SOLOS A LO BESTIA" is written above the staff. The number "16" is written above the staff. The words "a la A y" are written above the staff. The words "D.S. al Fine" are written above the staff.

TROMPETA 3 

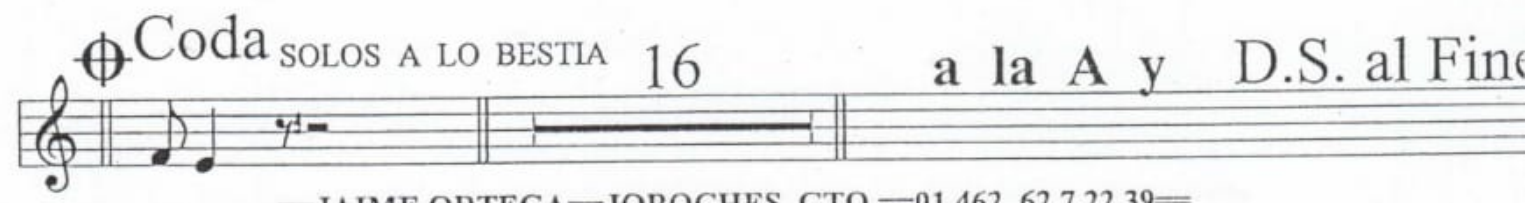
 A Fine

 7



 6

 Coda D.S. al Coda

 Coda SOLOS A LO BESTIA 16 a la A y D.S. al Fine

EL SILENCIO

Instrumental

CUMBLA  
BANDA M

TUBA  
Bb

