

CLAR. 1^o "EMBELESO" m.m.

Handwritten musical score for Clarinet 1st part of "EMBELESO". The score is written on a grand staff with a treble clef and a key signature of one sharp (F#). The time signature is 2/4. The music begins with a rest followed by a series of notes and rests. There are several dynamic markings, including accents and slurs. A section of the score is marked "CLAR. TERCER". The score concludes with a double bar line and a final note.

Empty musical staff line.

MARTIN CAMPA
COMARCO

R. DE TAMAYO 670.

Empty musical staff line.

CLAR. 2^a "EMBELESD" m.m.

Handwritten musical notation for Clarinet 2, titled "EMBELESD". The score is written on a grand staff with a treble clef and a key signature of one sharp (F#). The time signature is common time (C). The notation includes various rhythmic values, accidentals, and dynamic markings. The piece concludes with a double bar line and a fermata over the final note.

Handwritten musical notation on a single staff, featuring a treble clef and a key signature of one sharp (F#). The notation includes a few notes with accidentals and a fermata over the final note.

Empty musical staff.

MARTIN

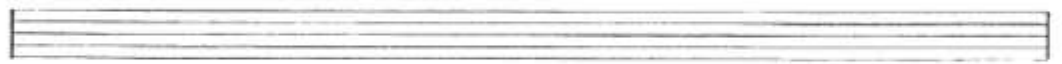
Empty musical staff.

CLAR.
3^o

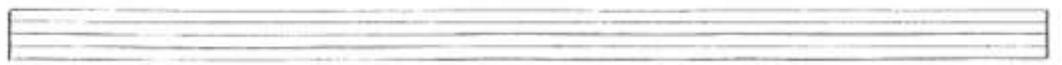
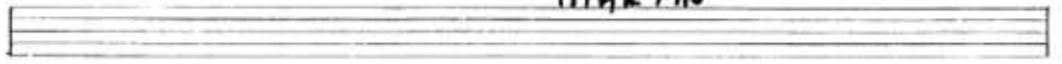
"EMBELESO"

Handwritten musical notation for Clarinet 3rd part of "EMBELESO". The score is written on five staves. The first staff begins with a treble clef, a key signature of one sharp (F#), and a common time signature (C). The music consists of a series of notes, many with accents and slurs, and rests. The notation includes various rhythmic values and articulation marks.

Handwritten musical notation for Clarinet 3rd part, second system. It starts with a treble clef, a key signature of one sharp (F#), and a common time signature (C). The notation includes notes with accents and slurs, and rests.



MARTÍN



TROMPETA
1^a

m.m.

"EMBELESO"

Handwritten musical notation for the first system of "EMBELESO". It consists of three staves. The top staff is in treble clef with a key signature of one sharp (F#) and a 2/4 time signature. It begins with a whole rest, followed by a double bar line, and then a series of eighth and quarter notes with accents. The middle staff continues the melody with similar rhythmic patterns. The bottom staff contains the number "31" centered between two commas.

Handwritten musical notation for the second system of "EMBELESO". It consists of one staff with a whole rest, followed by a double bar line, and then a series of notes with various markings, including a "2V." and some crossed-out notes.

Handwritten musical notation for the third system of "EMBELESO". It consists of one staff with a double bar line, followed by a series of notes with accents and a fermata over the final note.

MARTIN

TROMPETA 2ª m.m.
"EMBELESO"

Handwritten musical notation for the first system of "EMBELESO". It consists of two staves. The top staff is in treble clef with a key signature of one sharp (F#) and a common time signature (C). It begins with a whole rest, followed by a double bar line and a repeat sign. The notation includes various notes, rests, and accidentals. The bottom staff is in bass clef and contains notes and rests corresponding to the top staff. Below the staves, the number "31" is written.

~~al X 2v. + a~~

Handwritten musical notation for the second system of "EMBELESO". It consists of two staves. The top staff is in treble clef with a key signature of one sharp (F#) and a common time signature (C). It begins with a double bar line and a repeat sign, followed by notes and rests. The bottom staff is in bass clef and contains notes and rests corresponding to the top staff.

Empty musical staff.

MARÍN

Empty musical staff.

Empty musical staff.

TROMPETA
3^a

m.m.

"EMBELESD"

Handwritten musical notation for the first system. It features a treble clef, a key signature of one sharp (F#), and a common time signature (C). The notation includes a double bar line with a repeat sign, followed by notes and rests on two staves. There are some handwritten annotations above the notes, including a percentage symbol and the number 7.

A single staff of music containing the number "31" written in the center.

Handwritten musical notation on a single staff, including a double bar line, a sharp sign, and the text "2 V." followed by a circled "a".

Handwritten musical notation on a single staff, starting with a circled "a" and followed by notes and rests.

TROMBÓN 1^o m.m
"EMBELESO"

p 72 - m MARRIN

TROMBON 2^o "EMBELESO" m.m.

Handwritten musical score for Trombone 2, titled "EMBELESO" in moderate tempo (m.m.). The score consists of 11 staves of music. The first staff begins with a treble clef, a key signature of one flat (B-flat), and a common time signature. The music is written in a rhythmic style with many eighth and sixteenth notes, often beamed together. There are several dynamic markings, including accents and slurs. A "31" marking is present on the third staff. The piece concludes with a double bar line and a final note on the eleventh staff.

MARTIN

Trombon 3^o "EMBELESO" m.m.

Handwritten musical score for Trombon 3^o of the piece "EMBELESO". The score is written on ten staves. The first staff contains the instrument and part number, the title, and the tempo marking "m.m.". The second staff begins with a treble clef, a key signature of one flat (Bb), and a common time signature (C). The music consists of a series of rhythmic patterns, primarily eighth and sixteenth notes, with various rests and dynamic markings. There are several double bar lines with repeat signs and some sections marked with "X". The notation includes slurs, accents, and some specific rhythmic notations like "3 1" and "1-2". The score concludes with a final double bar line and a repeat sign.

MARTIN

TUBA "EMBELESD" m.m.

Handwritten musical score for Tuba titled "EMBELESD" in mezzo-modo (m.m.). The score consists of seven staves of music. The first staff begins with a treble clef, a key signature of one sharp (F#), and a common time signature (C). The music is written in a rhythmic style with many eighth and sixteenth notes, often beamed together. There are several triplets and slurs throughout. The second staff continues the melody with similar rhythmic patterns. The third and fourth staves show more complex rhythmic figures, including some sixteenth-note runs. The fifth staff has a double bar line and a repeat sign. The sixth staff continues the piece. The seventh staff is a single line of music with a double bar line and a repeat sign. The notation is dense and characteristic of a rhythmic study or exercise.

Alto's "EMBELESO" m.m

Handwritten musical score for Alto's "EMBELESO". The score is written on a grand staff with treble and bass clefs. The key signature is one sharp (F#) and the time signature is common time (C). The music consists of several staves of rhythmic notation, primarily using eighth and sixteenth notes. There are several repeat signs (double bar lines with dots) and a double bar line with a repeat sign at the end of the piece. The notation includes various rhythmic patterns and rests.

MARTIN

Three empty musical staves for the part labeled "MARTIN".