

((**Guadalajara**))

Clarinete 1

Julion

Trans: paço Chavez
pacomaldini3@hotmail.com

♩ = 200

7

13

18

25

39

45

52

58

64

92

97

103

110

119

Voz

A

B

20

3

1.

2.

7

7

♩ = 110

♩ = 200

D.S. al Fine

((**Guadalajara**))

Clarinete 2

Julion

Trans: paço Chavez
pacomaldini3@hotmail.com

♩ = 200

7

13 Voz

18

25

31 A

39

45

52

58

64 B

72 20 3 1. 2.

92 D.S. al Fine

97

103

110 ♩ = 110 7 ♩ = 200

119

Clarinete 3

((**Guadalajara**))

Julion

Trans: paño Chavez
pacomaldini3@hotmail.com

♩ = 200

7

13 Voz

18

25

31 A

39

45

52

58

64 B

92 D.S. al Fine

97

103

110 =110 7 =200

119

((^xGuadalajara^x))

Trompeta 1

Jubion

Trans: paço Chavez
pacomaldini3@hotmail.com

♩ = 200

7

13

Voz

18

23

2

2

31

A

15

51

57

64

B

75

5

85

5

3

1.

2.

D.S. al Fine

93

98

104

110

♩ = 110

118

♩ = 200

((**Guadalajara**))

Trompeta 2

Julion

Trans: paño Chavez
pacomaldini3@hotmail.com

♩ = 200

((**Guadalajara**))

Trompeta 3

Julion

Trans: paço Chavez
pacomaldini3@hotmail.com

♩ = 200

7

13

18

25

31

37

51

57

64

75

85

93

98

105

110

118

Voz

A

B

2

15

5

5

3

1.

2.

D.S. al Fine

3

♩ = 110

♩ = 200

((^{**}Guadalajara^{**}))

Trombón 1 Si \flat

Julion

Trans: paço Chavez
pacomaldini3@hotmail.com

Musical score for Trombone 1 in B-flat major, 8/8 time. The score consists of 11 staves of music. The tempo is marked as quarter note = 200. The key signature has two flats (B-flat major). The score includes various musical notations such as slurs, ties, and dynamic markings. A watermark 'DAMIÁN' is visible across the score.

10

18 **A** 12

36

47

56

64 **B**

73 2

84 1.

91 2. *D.S. al Fine*

100

108 =110 3

118 =200

((**Guadalajara**))

Trombón 2 Sib

Jubion

Trans: pafo Chavez
pacomaldini3@hotmail.com

♩ = 200

10

18 **A** 12

36

47

56

64 **B**

73 2

85 1. 2.

92 **D.S. al Fine**

100

108 ♩ = 110 3

118 ♩ = 200

((**Guadalajara**))

Trombón 2

Julion

Trans: pafo Chavez
pacomaldini3@hotmail.com

$\text{♩} = 200$

10

18 **A** 12

36

47

56

64 **B**

73 2

85 1. 2.

92 *D.S. al Fine*

100

108 $\text{♩} = 110$ 3

118 $\text{♩} = 200$

((^{**}Guadalajara^{**}))

Trombón 3

Julion

Trans: paço Chavez
pacomaldini3@hotmail.com

♩ = 200

10

Voz

18

12

A

36

47

56

64

B

73

2

84

1.

91

2. D.S. al Fine

100

108

♩ = 110

3

118

♩ = 200

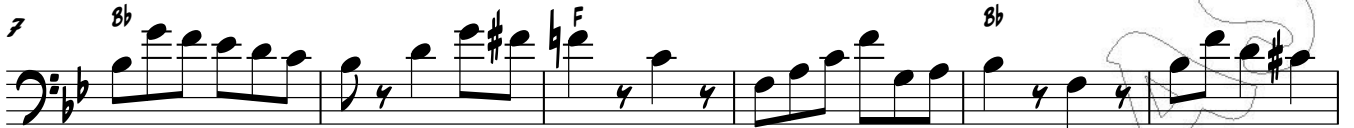
((**Guadalajara**))

Tuba

Julion

Trans: paço Chavez
pacomaldini3@hotmail.com

$\text{♩} = 200$



Guadalajara Cont....

2

Tuba

59 *F* *8b*

64 **B** *C*

69 *F*

75 *C*

81 *F*

87 *C* *F* *C* 1. *F* 2. *D.S. al Fine*

93 *F* *8b* *F*

99 *8b* *F* *8b*

105 *F* *8b*

110 *♩ = 110* 7 *8b* *♩ = 200*

120

